



Architectural LED floodlight for fixed or dynamic lighting

UniFlood C Pro

The Philips UniFlood C Pro offers a unique rugged elegance, with a cylindrical form and flowing lines that connect the front and back housings beautifully. This is a compact architectural floodlighting design where every element has a purpose; the front section provides exceptional lighting, the back section houses all the electrical components. Between the two, the fins dissipate heat and also serve as a decorative element. Exterior-rated, the Philips UniFlood C Pro is a cost-effective, architectural LED floodlight that is designed for façade, landscape and outdoor floodlighting applications. The robust mechanical design and high-efficiency optics make it ideal for illuminating multi-storey exterior façades, bridges, landmarks and monuments. Architects and designers have the freedom to explore a wide range of concepts and designs with no limitations, thanks to a range of colours, multiple spread lenses and a DMX512/RDM control option.

Benefits

- Available in white, monochromatic colors, RGB, RGBW and tunable white
- Wide range of beam angles from Narrow Spot to Wide Flood
- Available in DMX512/RDM control interface option

Features

- Robust design, IP66 rated for outdoor use
- Optical distributions: 3.5°, 10°, 15°, 30°, 45° and 60°
- Adjustable ±90° tilting angle
- Through wiring for DMX signal via dedicated cables with IP67 connectors

UniFlood C Pro

Application

- Bridges, Monuments, Façades
- Landscape
- Parks and Plazas

Warnings and Safety

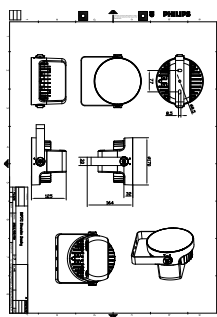
- For outdoor use only

Versions



UniFlood C Pro

Dimensional drawing



UniFlood C Pro

General Information	
Driver included	Yes
Light Technical	
Light source color	RGBW
Correlated Color Temperature (Nom)	-
Color rendering index (CRI)	N.A.
Operating and Electrical	
Power Consumption	50 W
Controls and Dimming	
Dimmable	Yes
Mechanical and Housing	
Optical cover type	Clear glass
Housing Color	Dark gray
Mech. impact protection code	IK06
Ingress protection code	IP66
Approval and Application	
CE mark	Yes

Light Technical

Order Code	Full Product Name	Luminous Flux
50468499	BVP372 20LED RGBNW 220V 15 DMX 50W HP	2,230 lm
50471499	BVP372 20LED RGBNW 220V 60 DMX 50W HP	1,835 lm

