



Architectural LED floodlight for fixed or dynamic lighting

UniFlood C Pro

The Philips UniFlood C Pro offers a unique rugged elegance, with a cylindrical form and flowing lines that connect the front and back housings beautifully. This is a compact architectural floodlighting design where every element has a purpose; the front section provides exceptional lighting, the back section houses all the electrical components. Between the two, the fins dissipate heat and also serve as a decorative element. Exterior-rated, the Philips UniFlood C Pro is a cost-effective, architectural LED floodlight that is designed for façade, landscape and outdoor floodlighting applications. The robust mechanical design and high-efficiency optics make it ideal for illuminating multi-storey exterior façades, bridges, landmarks and monuments. Architects and designers have the freedom to explore a wide range of concepts and designs with no limitations, thanks to a range of colours, multiple spread lenses and a DMX512/RDM control option.

Benefits

- Available in white, monochromatic colors, RGB, RGBW and tunable white
- Wide range of beam angles from Narrow Spot to Wide Flood
- Available in DMX512/RDM control interface option

Features

- Robust design, IP66 rated for outdoor use
- Optical distributions: 3.5°, 10°, 15°, 30°, 45° and 60°
- Adjustable ±90° tilting angle
- Through wiring for DMX signal via dedicated cables with IP67 connectors

UniFlood C Pro

Application

- Bridges, Monuments, Façades
- Landscape
- Parks and Plazas

Warnings and Safety

- For outdoor use only

Versions

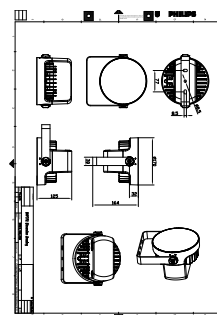
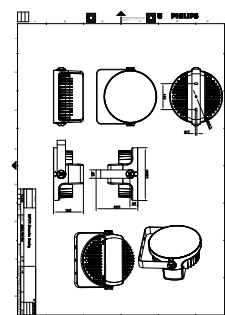


UniFlood C Pro



UniFlood C Pro

Dimensional drawing



UniFlood C Pro

| General Information | |
|------------------------------------|-------------------|
| Driver included | Yes |
| Light Technical | |
| Light source color | 840 neutral white |
| Correlated Color Temperature (Nom) | 4000 K |
| Color rendering index (CRI) | >80 |
| Mechanical and Housing | |
| Optical cover type | Clear glass |
| Housing Color | Dark gray |
| Mech. impact protection code | IK06 |
| Ingress protection code | IP66 |
| Approval and Application | |
| CE mark | Yes |

Light Technical

| Order Code | Full Product Name | Luminous Flux |
|--------------|-------------------------------------|---------------|
| 911401774313 | BVP372 16LED 40K 220V 10 DMX 40W HP | 2,610 lm |
| 911401776563 | BVP374 60LED 40K 220V 45 150W HP | 9,730 lm |

Operating and Electrical

| Order Code | Full Product Name | Power Consumption |
|--------------|-------------------------------------|-------------------|
| 911401774313 | BVP372 16LED 40K 220V 10 DMX 40W HP | 40 W |

| Order Code | Full Product Name | Power Consumption |
|--------------|----------------------------------|-------------------|
| 911401776563 | BVP374 60LED 40K 220V 45 150W HP | 150 W |

Controls and Dimming

| Order Code | Full Product Name | Dimmable |
|--------------|-------------------------------------|----------|
| 911401774313 | BVP372 16LED 40K 220V 10 DMX 40W HP | Yes |

| Order Code | Full Product Name | Dimmable |
|--------------|----------------------------------|----------|
| 911401776563 | BVP374 60LED 40K 220V 45 150W HP | No |

