



Architectural LED floodlight for fixed or dynamic lighting

UniFlood C Pro

The Philips UniFlood C Pro offers a unique rugged elegance, with a cylindrical form and flowing lines that connect the front and back housings beautifully. This is a compact architectural floodlighting design where every element has a purpose; the front section provides exceptional lighting, the back section houses all the electrical components. Between the two, the fins dissipate heat and also serve as a decorative element. Exterior-rated, the Philips UniFlood C Pro is a cost-effective, architectural LED floodlight that is designed for façade, landscape and outdoor floodlighting applications. The robust mechanical design and high-efficiency optics make it ideal for illuminating multi-storey exterior façades, bridges, landmarks and monuments. Architects and designers have the freedom to explore a wide range of concepts and designs with no limitations, thanks to a range of colours, multiple spread lenses and a DMX512/RDM control option.

Benefits

- Available in white, monochromatic colors, RGB, RGBW and tunable white
- Wide range of beam angles from Narrow Spot to Wide Flood
- Available in DMX512/RDM control interface option

Features

- Robust design, IP66 rated for outdoor use
- Optical distributions: 3.5°, 10°, 15°, 30°, 45° and 60°
- Adjustable ±90° tilting angle
- Through wiring for DMX signal via dedicated cables with IP67 connectors

UniFlood C Pro

Application

- Bridges, Monuments, Façades
- Landscape
- Parks and Plazas

Warnings and Safety

- For outdoor use only

Versions



UniFlood C Pro

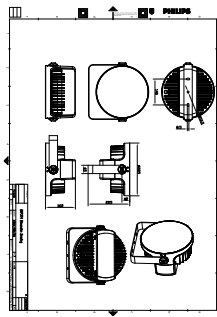
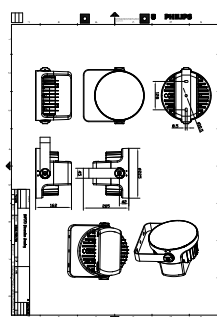


UniFlood C Pro



UniFlood C Pro

Dimensional drawing



UniFlood C Pro

General Information

Driver included	Yes
-----------------	-----

Controls and Dimming

Dimmable	Yes
----------	-----

Mechanical and Housing

Optical cover type	Clear glass
--------------------	-------------

Housing Color	Dark gray
---------------	-----------

Mech. impact protection code	IK06
------------------------------	------

Ingress protection code	IP66
-------------------------	------

Approval and Application

CE mark	Yes
---------	-----

Light Technical

Order Code	Full Product Name	Light source color	Correlated Color Temperature (Nom)	Color rendering index (CRI)	Luminous Flux
911401773953	BVP371 12LED RGBNW 220V 10 DMX 24W HE	RGBW	-	N.A.	1,090 lm
911401775323	BVP373 32LED RGBNW 220V 30 DMX 80W HP	RGBW	-	N.A.	4,170 lm
911401776453	BVP374 60LED 30K 220V 30 DMX 150W HP	830 warm white	3000 K	>80	11,190 lm

Order Code	Full Product Name	Light source color	Correlated Color Temperature (Nom)	Color rendering index (CRI)	Luminous Flux
911401776473	BVP374 60LED 30K 220V 45 DMX 150W HP	830 warm white	3000 K	>80	8,390 lm
911401776673	BVP374 60LED RGBNW 220V 30 DMX 150W HP	RGBW	-	N.A.	7,855 lm
911401776683	BVP374 60LED RGBNW 220V 45 DMX 150W HP	RGBW	-	N.A.	5,890 lm

Operating and Electrical

Order Code	Full Product Name	Power Consumption
911401773953	BVP371 12LED RGBNW 220V 10 DMX 24W HE	24 W
911401775323	BVP373 32LED RGBNW 220V 30 DMX 80W HP	80 W
911401776453	BVP374 60LED 30K 220V 30 DMX 150W HP	150 W

Order Code	Full Product Name	Power Consumption
911401776473	BVP374 60LED 30K 220V 45 DMX 150W HP	150 W
911401776673	BVP374 60LED RGBNW 220V 30 DMX 150W HP	150 W
911401776683	BVP374 60LED RGBNW 220V 45 DMX 150W HP	150 W

