

ArenaVision LED gen3.5 – Revolutionizing the pitch-lighting experience

ArenaVision LED gen3.5 C

The Philips ArenaVision LED floodlighting system is an innovative LED pitch-lighting solution supporting the latest TV broadcasting standards. Designed exclusively for sports and multi-purpose venues, ArenaVision LED offers outstanding light quality, effective thermal management, and long lifetime. When combined with control applications such as the InteractSports lighting management system, ArenaVision LED can simplify the delivery of the right illumination by scheduling or through realtime adjustments and can be used to create customized light shows before, during and after the main event. To ensure optimized use for both indoor and outdoor applications, the floodlight range includes two single piece pressure die cast housing versions, hosting 2 and 3 LED engines respectively. These versions also function with an external driver box – separate for use at a distance from the floodlight (BV version), or pre-fixed onto the mounting bracket of the floodlight (HGB version). This external driver box ensures ease of installation and lower initial cost.

ArenaVision LED gen3.5 C

Benefits

- Maximum design flexibility to fit different stadium architectures and high lighting quality – compliant with international broadcasting standards for any type of sports
- The single High-Power IP66 rated, DMX driver enables ArenaVision LED to be connected to the Interact Sports lighting management system, thereby enabling remote light management and creation of dynamic light shows
- While delivering maximum light output the floodlight has an excellent thermal management system, which in combination with its low weight and IP66 rating helps maximize lifetime and minimize maintenance costs for both new built and retrofit installations
- Equipped with Service tag, a QR-based identification system that makes each luminaire uniquely identifiable and provides maintenance, installation and spare part information

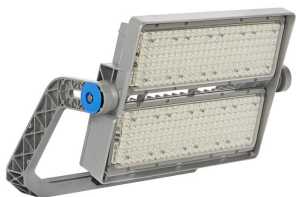
Features

- Single piece pressure die cast housing, with a protection level of IP66 against dust and water
- Wide range of asymmetrical and symmetrical optics ensuring low glare and best in class lighting uniformity exceeding the requirements of all types of sports lighting level standards
- Wide range of ambient temperature tolerance making it suitable for a variety of sports applications
- Option to add additional accessories to achieve best in class glare and up-light control
- Programmable DMX Driver to enable programming and integration with entertainment lighting fixtures and other Interact Sports applications

Application

- Outdoor arenas, stadiums and Racing tracks (Cricket, Football, Rugby, Tennis, Hockey, Golf, Ice skating, Horse racing, F1 racing, Athletics, etc.)
- Indoor sports arenas and halls (Swimming pools, Velodromes, Basketball, Ice hockey, etc.)
- Multiple and multipurpose sports facilities and arenas

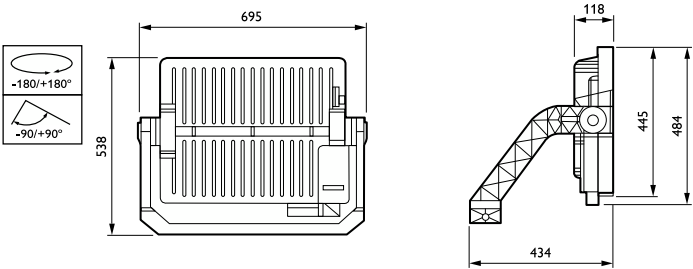
Versions



ArenaVision LED gen3 5

ArenaVision LED gen3.5 C

Dimensional drawing



General Information	
Driver included	Yes
Service tag	Yes
Light Technical	
Light source color	957 cool white
Correlated Color Temperature (Nom)	5700 K
Color rendering index (CRI)	>85
Controls and Dimming	
Dimmable	Yes
Mechanical and Housing	
Optical cover type	Polycarbonate bowl/cover clear
Housing Color	Aluminum and RAL (to be defined)
Mech. impact protection code	IK08
Ingress protection code	IP66
Approval and Application	
CE mark	Yes

Light Technical

Order Code	Full Product Name	Luminous Flux
911401613407	BVP428 C LED1480/957 1340W S2 BV	148,000 lm
911401613507	BVP428 C LED1480/957 1340W S3 BV	148,000 lm
911401613607	BVP428 C LED1480/957 1340W S4 BV	148,000 lm
911401613707	BVP428 C LED1480/957 1340W S5 BV	148,000 lm
911401613807	BVP428 C LED1480/957 1340W S6 BV	148,000 lm
911401613907	BVP428 C LED1480/957 1340W S7 BV	148,000 lm
911401614007	BVP428 C LED1480/957 1340W S8 BV	148,000 lm
911401614607	BVP418 C LED990/957 890W S5 BV	99,000 lm

Operating and Electrical

Order Code	Full Product Name	Power Consumption
911401613407	BVP428 C LED1480/957 1340W S2 BV	1,340 W
911401613507	BVP428 C LED1480/957 1340W S3 BV	1,340 W
911401613607	BVP428 C LED1480/957 1340W S4 BV	1,340 W
911401613707	BVP428 C LED1480/957 1340W S5 BV	1,340 W

Order Code	Full Product Name	Power Consumption
911401613807	BVP428 C LED1480/957 1340W S6 BV	1,340 W
911401613907	BVP428 C LED1480/957 1340W S7 BV	1,340 W
911401614007	BVP428 C LED1480/957 1340W S8 BV	1,340 W
911401614607	BVP418 C LED990/957 890W S5 BV	890 W

