

Direct View Pixel Luminaires for Creative Architectural and Media Façade Applications

UniString

UniString is a surface mounted, exterior-rated and compact sized architectural LED direct view string that is designed for architectural and media façade outdoor lighting applications. The robust mechanical design, easy installation and unique optical lenses make UniString ideal for buildings/media facades, bridges, arenas, theaters, amusement parks and recreational centers. Available in white, monochromatic colors, RGB, RGBW and tunable white. Available in symmetrical and asymmetrical optical distributions with DMX control option to give architects and designers the freedom to explore a wide range of concepts and design with no limitations.

Benefits

- Available in three sizes and three power ranges to fit any application requirements.
- Robust Design & IP66 rating for outdoor use.
- Asymmetric beam option available to provide higher efficiency, better visual clearance and reduce lighting pollution in tall buildings and towers
- Through wiring for power and DMX data via IP67 connectors
- Available in track and surface mounting options

Features

- Standard: RGBW, RGB, 2700K, 3000K and 4000K
- Optional 5000K, Monochromatic Colors and Tunable Wh
- Standard pixel pitch of 125mm (center-to-center) for small and medium sizes
- Standard pixel pitch of 200mm (center-to-center) for large size
- Customized mounting tracks available (sold separately)

Application

- Bridges, Monuments, Facades
- Landscape
- Parks and Plazas

Warnings and Safety

- For outdoor use only

Versions



159A0582



159A0835

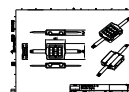
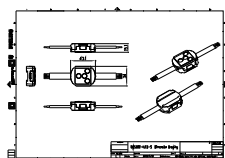


159A0794

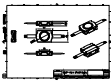
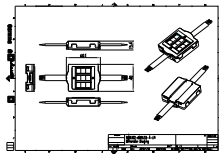


159A0588

Dimensional drawing



Dimensional drawing



General Information	
Driver included	No
Light source replaceable	No
Light Technical	
Color rendering index (CRI)	80
Controls and Dimming	
Dimmable	No
Mechanical and Housing	
Optical cover type	Polycarbonate bowl/cover clear
Housing Color	Black
Mech. impact protection code	IK06
Ingress protection code	IP66
Approval and Application	
CE mark	Yes
Flammability mark	For mounting on normally flammable surfaces
Glow-wire test	Temperature 750 °C, duration 30 s

Light Technical

Order Code	Full Product Name	Luminaire light beam spread	Light source color	Correlated Color	
				Temperature (Nom)	Luminous Flux
74818799	BWS302 8LED 40K 24V A TB N10P20	85° x 110°	Neutral white	4000 K	134 lm
74736499	BWS300 4LED 30K 15V S N16P12	110° x 110°	Warm white	3000 K	67 lm
74776099	BWS301 6LED 40K 24V S N16P12	110° x 110°	Neutral white	4000 K	108 lm
74811899	BWS302 8LED 30K 24V A LR N10P20	85° x 110°	Warm white	3000 K	126 lm

Operating and Electrical

Order Code	Full Product Name	Power Consumption
74818799	BWS302 8LED 40K 24V A TB N10P20	20 W
74736499	BWS300 4LED 30K 15V S N16P12	16 W

Order Code	Full Product Name	Power Consumption
74776099	BWS301 6LED 40K 24V S N16P12	24 W
74811899	BWS302 8LED 30K 24V A LR N10P20	20 W

