



# When light addresses the needs of cleanroom

## GreenPerform Teardrop G3

Greenperform Teardrop CR388C G3 is an affordable but with high system efficacy cleanroom batten. By means of its slim and streamlined design, it perfectly reduces the dust collection on the housing. Thanks to its max 150lm/w system efficacy, it delivers higher energy saving for the customer. In addition, CR388C G3 provides easy connection for continuous installation. Dali interface and CRI90 are provided by this family to further extend the availability for control interface and visual comfort. CR388C G3 is a decent product for newly installed cleanroom and retrofit cleanroom projects as well.

### Benefits

- More energy saving due to high lm/w system efficacy
- Less dust collection on the housing
- System interface with higher CRI available for easy control function and visual comfort
- Easy and quick installation on-site

### Features

- Max 150lm/w system efficacy
- Slim and streamlined housing design
- Dali and CRI90 are offered
- Quick connector for continuous installation

### Application

- Electronics or semi conductor industry cleanroom

### Specifications

# GreenPerform Teardrop G3

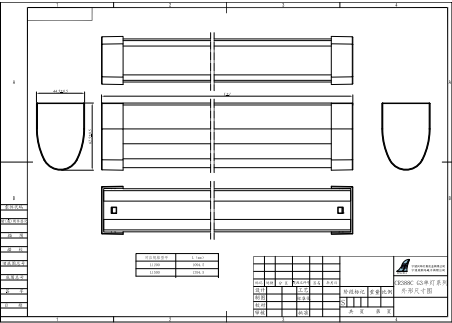
Mounting type	Ceiling
Operating Temperature range	0 to +35°C
Light Source	LED
Mains Voltage	220-240V/50-60Hz
Dimming	PSU PSD
Control system input	DALI
Main color of the luminaire	White Yellow for Amber version
Lumen maintenance at median useful life	L70B50 50.000h

Flicker / Pst / SVM	PST<0.5, MD<3.2%, SVM<1
Luminous flux	1700lm~8000lm
Luminaire efficacy	up to 150lm/W
Correlated color temperature - CCT	Amber/4000K/5000K
Color Rendering index - CRI	80
Mechanical impact protection	IK03
Ingress protection	IP40
Driver replaceable	No
Overall length	1200mm/1500mm
Installation	Ceiling

## Versions



## Dimensional drawing



GreenPerform Teardrop G3

General Information	
Driver included	Yes
Number of gear units	1 unit
Light Technical	
Beam angle of light source	120 degree(s)
Color rendering index (CRI)	>80
Optic type	Wide beam
Operating and Electrical	
Protection class IEC	Safety class I
Input Voltage	220 to 240 V
Line Frequency	50 or 60 Hz
Suitable for random switching	Yes
Mechanical and Housing	
Optical cover type	Polycarbonate
Housing Color	White RAL 9003
Mech. impact protection code	IK03
Ingress protection code	IP40
Approval and Application	
Ambient temperature range	0 to +35 °C
CE mark	Yes
ENEC mark	-
Flammability mark	-
Glow-wire test	-
Initial Performance (IEC Compliant)	
Luminous flux tolerance	+/-10%

General Information

Order Code	Full Product Name	Gear
911401510944	CR388C G3 LED80/840 L150 PSD	EBD
911401510544	CR388C G3 LED45/850 L120	EB

Light Technical

Order Code	Full Product Name	Correlated Color Temperature (Nom)	Luminous Efficacy (rated) (Nom)	Luminous Flux	Number of light sources
911401510944	CR388C G3 LED80/840 L150 PSD	4000 K	140 lm/W	8,000 lm	272

Order Code	Full Product Name	Correlated Color Temperature (Nom)	Luminous Efficacy (rated) (Nom)	Luminous Flux	Number of light sources
911401510544	CR388C G3 LED45/850 L120	5000 K	150 lm/W	4,500 lm	156

Operating and Electrical

Order Code	Full Product Name	Power Consumption
911401510944	CR388C G3 LED80/840 L150 PSD	57 W

Order Code	Full Product Name	Power Consumption
911401510544	CR388C G3 LED45/850 L120	30 W

Controls and Dimming

Order Code	Full Product Name	Dimmable	Maximum dim level
911401510944	CR388C G3 LED80/840 L150 PSD	DALI	10% (depends on dimmer, ELV)

Order Code	Full Product Name	Dimmable	Maximum dim level
911401510544	CR388C G3 LED45/850 L120	-	Not applicable

Initial Performance (IEC Compliant)

# GreenPerform Teardrop G3

Order Code	Full Product Name	Initial chromaticity
911401510944	CR388C G3 LED80/840 L150 PSD	8000

Order Code	Full Product Name	Initial chromaticity
911401510544	CR388C G3 LED45/850 L120	4500

