

Long-lasting, reliable solution

HID-Basic BSN/BMH MK4 semi-parallel for SON/CDO/CDM/MH/HPI

Impregnated electromagnetic copper ballasts for use with an external semi-parallel ignitor for CDM, CDO, MH, HPI (Plus) and SON lamps

Benefits

- System design: one ignitor SKD578 can trigger all lamps from 35 to 600 W
- Long-lasting reliable solution protected from overheating; better for hot environments than its predecessors; extended warranty
- Minimal watt losses thanks to orthocyclic winding process

Features

- Improved thermal features – much cooler ballast
- All ballasts are equipped with ThermoSwitch for protection against end-of-lamp-life phenomena
- Ballast can also be used in combination with series (superimposed) ignitor
- Equipped with screw terminal blocks as standard; insert contacts available upon request
- Ballasts for alternative mains voltages/frequencies available upon request

Application

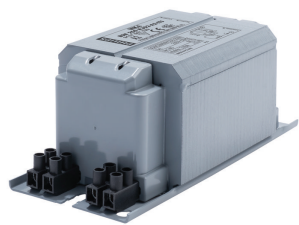
- Outdoor lighting
- Horticulture

HID-Basic BSN/BMH MK4 semi-parallel for SON/CDO/CDM/MH/HPI

Versions

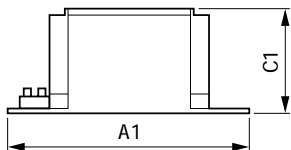
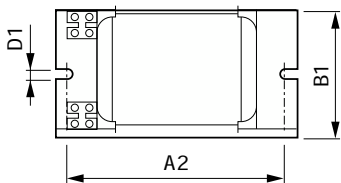


BSN 150 K302-A2-ITS 230V



BSN 250 K302-A2-ITS 230V

Dimensional drawing



Product	A1	A2	B1	C1	D1
BSN 150 K302-A2-ITS 230V 50Hz	134 mm	113 mm	76 mm	65 mm	6.2 mm
BSN 250 K302-A2-ITS 230V 50Hz	160 mm	139 mm	76 mm	65 mm	6.2 mm

