



# Product Description

## MASTER MHN-FC

Compact quartz metal halide lamps with double pinch

### Benefits

- Allows compact luminaire systems with precision optics for minimal light spill
- Good colour rendering creates a pleasant ambience with high visual comfort for players and spectators
- Continuous spectral distribution offers options for semi-professional stadiums and professional stadiums with regular TV coverage

### Features

- Double-pinch concept results in long lifetime
- Choice of 1000W and 2000W types
- Natural white colour appearance
- Compact light source allows small luminaire design

### Application

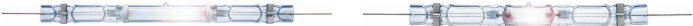
- Recreational sports and area floodlighting

### Warnings and Safety

- Use only in totally enclosed luminaire, even during testing (IEC61167, IEC 62035, IEC60598)
- The luminaire must be able to contain hot lamp parts if the lamp ruptures
- A lamp breaking is extremely unlikely to have any impact on your health. If a lamp breaks, ventilate the room for 30 minutes and remove the parts, preferably with gloves. Put them in a sealed plastic bag and take it to your local waste facilities for recycling. Do not use a vacuum cleaner.

# MASTER MHN-FC

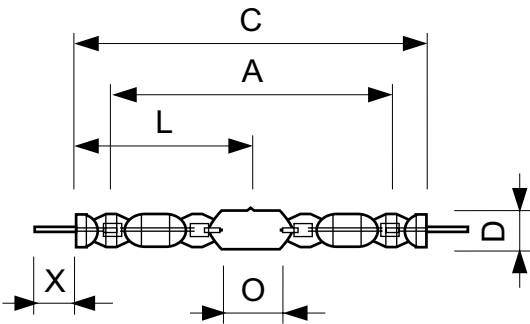
## Versions



LPPR MHN-FC 2000W 2200W

LPPR MHN-FC 1000W

## Dimensional drawing



Product	D (max)	D	O	X	L	A	C (max)
MASTER MHN-FC 1000W/740 230V XW	33 mm	25.5 mm	42.5 mm	58 mm	144 mm	226 mm	290 mm
MASTER MHN-FC 2000W/740 400V XW	33 mm	25.5 mm	108 mm	58 mm	177 mm	290 mm	357 mm
MASTER MHN-FC 2200W/640 400V XW	33 mm	25.5 mm	108 mm	58 mm	177 mm	290 mm	476 mm

General Information	
Cap base	Double Ended
Operating position	P5
Light Technical	
Colour designation	White (WH)
Controls and Dimming	
Dimmable	No
Mechanical and Housing	
Lamp Finish	Clear

## Light Technical

Order Code	Full Product Name	Chromaticity Coordinate X (Nom)	Chromaticity Coordinate Y (Nom)	Correlated Colour Temperature (Nom)	Colour rendering index (CRI)	Luminous efficacy (rated) (nom.)
21349500	MASTER MHN-FC 2000W/740 400V XW	380	419	4200 K	60	102 lm/W
41777500	MASTER MHN-FC 2200W/640 400V XW	382	400	4100 K	60	105 lm/W
21424900	MASTER MHN-FC 1000W/740 230V XW	374	366	4100 K	65	91 lm/W

## Operating and Electrical

## MASTER MHN-FC

Order Code	Full Product Name	Voltage (nom.)	Power Consumption
21349500	MASTER MHN-FC 2000W/740 400V XW	222 V	2,050 W
41777500	MASTER MHN-FC 2200W/640 400V XW	230 V	2,240.0 W

Order Code	Full Product Name	Voltage (nom.)	Power Consumption
21424900	MASTER MHN-FC 1000W/740 230V XW	130 V	1,040.0 W

### Approval and Application

Order Code	Full Product Name	Energy consumption kWh/1,000 hours	Mercury (Hg) content (nom.)
21349500	MASTER MHN-FC 2000W/740 400V XW	2,235 kWh	105 mg
41777500	MASTER MHN-FC 2200W/640 400V XW	2,464 kWh	103 mg

Order Code	Full Product Name	Energy consumption kWh/1,000 hours	Mercury (Hg) content (nom.)
21424900	MASTER MHN-FC 1000W/740 230V XW	1,144 kWh	74 mg

