



Product Description

MHN-TD

Double-ended quartz Metal-halide lamp

Benefits

- All types are UV-Block for reduced health and fading risks

Features

- Quartz discharge tube containing high-pressure mercury and a mixture of dysprosium, holmium and thulium halides (4200K) or tin iodide (3000K), with sodium and thallium added for colour correction and arc stabilisation
- double-ended lamps housed in a tubular clear UV-Block quartz evacuated outer envelope
- Restricted burning position

Application

- Indoors – accent lighting, general lighting in downlighters, e.g. in shops and malls
- Downlighters, uplighters and wall-washers, e.g. in shops and malls
- Outdoors – floodlighting monuments, facades and billboards

Warnings and Safety

- Use only in totally enclosed luminaire, even during testing (IEC61167, IEC 62035, IEC60598)
- The luminaire must be able to contain hot lamp parts if the lamp ruptures
- Control gear must include end-of-life protection (IEC61167, IEC 62035)
- A lamp breaking is extremely unlikely to have any impact on your health. If a lamp breaks, ventilate the room for 30 minutes and remove the parts, preferably with gloves. Put them in a sealed plastic bag and take it to your local waste facilities for recycling. Do not use a vacuum cleaner.

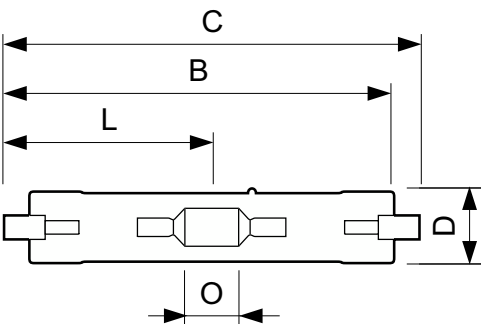
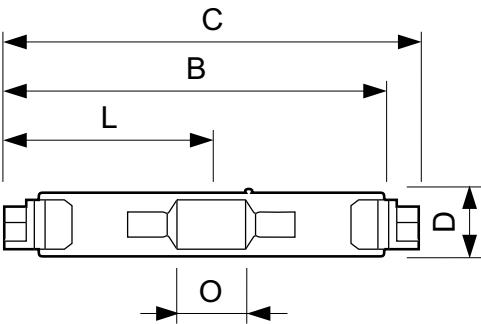
MHN-TD

Versions



LPPR MHN-TD FC2

Dimensional drawing



| Product | D (max) | D | O | C (max) |
|----------------------------|---------|-----------|-------|----------|
| MHN-TD 250W/842 FC2 1CT/12 | 27.5 mm | 1.08 inch | 27 mm | 161.6 mm |

| Product | D (max) | D | O | C (max) |
|-----------------------------|---------|-----------|---------|----------|
| MHN-TD 150W/730 RX7s 1CT/12 | 23.0 mm | 0.89 inch | 17.8 mm | 135.4 mm |
| MHN-TD 150W/842 RX7s 1CT/12 | 23.0 mm | 0.89 inch | 17.8 mm | 135.4 mm |
| MHN-TD 70W/730 RX7s 1CT/12 | 19.5 mm | 0.75 inch | 7.7 mm | 117.6 mm |
| MHN-TD 70W/842 RX7s 1CT/12 | 19.5 mm | 0.75 inch | 7.7 mm | 117.6 mm |

| General Information | |
|------------------------|-------|
| Operating Position | P45 |
| Controls and Dimming | |
| Dimmable | No |
| Mechanical and Housing | |
| Bulb Finish | Clear |

General Information

MHN-TD

| Order Code | Full Product Name | Cap-Base |
|------------|-----------------------------|----------|
| 21532500 | MHN-TD 70W/842 RX7s 1CT/12 | RX7s |
| 21536300 | MHN-TD 150W/842 RX7s 1CT/12 | RX7s |
| 21530100 | MHN-TD 70W/730 RX7s 1CT/12 | RX7s |

| Order Code | Full Product Name | Cap-Base |
|------------|-----------------------------|----------|
| 21534900 | MHN-TD 150W/730 RX7s 1CT/12 | RX7s |
| 73400615 | MHN-TD 250W/842 FC2 1CT/12 | FC2 |

Light Technical (1/2)

| Order Code | Full Product Name | Chromaticity | Chromaticity | Color Designation | Correlated Color Temperature (Nom) | Color | Luminous Efficacy (Rated) (Min) | Luminous Efficacy (rated) (Nom) |
|------------|-----------------------------|--------------------|--------------------|-------------------|------------------------------------|-----------------------|---------------------------------|---------------------------------|
| | | Coordinate X (Nom) | Coordinate Y (Nom) | | | rendering index (CRI) | | |
| 21532500 | MHN-TD 70W/842 RX7s 1CT/12 | 0.371 | 0.366 | Cool White (CW) | 4200 K | 75 | 67 lm/W | 75 lm/W |
| 21536300 | MHN-TD 150W/842 RX7s 1CT/12 | 0.371 | 0.366 | Cool White (CW) | 4200 K | 81 | 73 lm/W | 81 lm/W |
| 21530100 | MHN-TD 70W/730 RX7s 1CT/12 | 0.434 | 0.398 | Warm White (WW) | 3000 K | 65 | 67 lm/W | 75 lm/W |
| 21534900 | MHN-TD 150W/730 RX7s 1CT/12 | 0.434 | 0.398 | Warm White (WW) | 3000 K | 67 | 81 lm/W | 90 lm/W |
| 73400615 | MHN-TD 250W/842 FC2 1CT/12 | 370 | 365 | Cool White (CW) | 4200 K | 85 | - | 80 lm/W |

Light Technical (2/2)

| Order Code | Full Product Name | Luminous Flux |
|------------|-----------------------------|---------------|
| 21532500 | MHN-TD 70W/842 RX7s 1CT/12 | 5,800 lm |
| 21536300 | MHN-TD 150W/842 RX7s 1CT/12 | 12,500 lm |
| 21530100 | MHN-TD 70W/730 RX7s 1CT/12 | 5,800 lm |

| Order Code | Full Product Name | Luminous Flux |
|------------|-----------------------------|---------------|
| 21534900 | MHN-TD 150W/730 RX7s 1CT/12 | 13,400 lm |
| 73400615 | MHN-TD 250W/842 FC2 1CT/12 | - |

Operating and Electrical

| Order Code | Full Product Name | Voltage (Nom) | Power Consumption |
|------------|-----------------------------|---------------|-------------------|
| 21532500 | MHN-TD 70W/842 RX7s 1CT/12 | 90 V | 77.0 W |
| 21536300 | MHN-TD 150W/842 RX7s 1CT/12 | 98 V | 155.0 W |
| 21530100 | MHN-TD 70W/730 RX7s 1CT/12 | 90 V | 77.0 W |

| Order Code | Full Product Name | Voltage (Nom) | Power Consumption |
|------------|-----------------------------|---------------|-------------------|
| 21534900 | MHN-TD 150W/730 RX7s 1CT/12 | 96 V | 155.0 W |
| 73400615 | MHN-TD 250W/842 FC2 1CT/12 | 95 V | 250.0 W |

Mechanical and Housing

| Order Code | Full Product Name | Bulb Shape |
|------------|-----------------------------|------------|
| 21532500 | MHN-TD 70W/842 RX7s 1CT/12 | TD |
| 21536300 | MHN-TD 150W/842 RX7s 1CT/12 | TD |
| 21530100 | MHN-TD 70W/730 RX7s 1CT/12 | TD |

| Order Code | Full Product Name | Bulb Shape |
|------------|-----------------------------|------------|
| 21534900 | MHN-TD 150W/730 RX7s 1CT/12 | TD |
| 73400615 | MHN-TD 250W/842 FC2 1CT/12 | T27 |

Approval and Application

| Order Code | Full Product Name | Energy | Mercury (Hg) | Mercury (Hg) |
|------------|-----------------------------|------------------------|---------------|---------------|
| | | Consumption kWh/1000 h | Content (Max) | Content (Nom) |
| 21532500 | MHN-TD 70W/842 RX7s 1CT/12 | 77 kWh | 11 mg | 11 mg |
| 21536300 | MHN-TD 150W/842 RX7s 1CT/12 | 155 kWh | 12.3 mg | 12.3 mg |

| Order Code | Full Product Name | Energy | Mercury (Hg) | Mercury (Hg) |
|------------|-----------------------------|------------------------|---------------|---------------|
| | | Consumption kWh/1000 h | Content (Max) | Content (Nom) |
| 21530100 | MHN-TD 70W/730 RX7s 1CT/12 | 77 kWh | 13.4 mg | 13.4 mg |
| 21534900 | MHN-TD 150W/730 RX7s 1CT/12 | 155 kWh | 18 mg | 18 mg |

MHN-TD

| Order Code | Full Product Name | Energy | Mercury (Hg) | Mercury (Hg) |
|------------|-------------------------------|---------------------------|------------------|------------------|
| | | Consumption kWh/1000 h | Content (Max) | Content (Nom) |
| 73400615 | MHN-TD 250W/842 FC2 1CT/12 | 277 kWh | - | 16 mg |

