



The perfect energy efficient LED replacement for conventional downlights

SmartBright LED Downlight DN029B

SmartBright Downlight family is the perfect energy efficient LED replacement for conventional downlights. It offers three solutions around energy efficiency, selectable colour temperature and being a three step dimming downlight: Essential SmartBright Downlight G3 DN029B-1– trailing and leading edge dimmable downlight is the ideal functional replacement for conventional downlights. This affordable and easy to install fitting delivers high energy savings without compromising on light quality. This hassle-free Essential SmartBright DN029B-2 downlight provides you with the flexibility to select the perfect colour temperature (Warm White/Cool White/Day Light) for the application. Integrated with trailing/leading edge dimming capability, this affordable and easy to install fitting delivers high energy savings without compromising on light quality. Essential SmartBright DN029B-3 step dimming downlight is the perfect hassle-free replacement for conventional dimmable downlights. Adjust the light level straight from the switch and save cost with installation as a dimmer unit is not required.

Benefits

- Reliable LED downlight for residential and general lighting applications
- Easy to install and IC-4 rated
- 3 years warranty

SmartBright LED Downlight DN029B

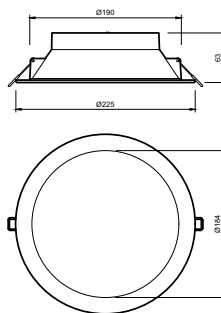
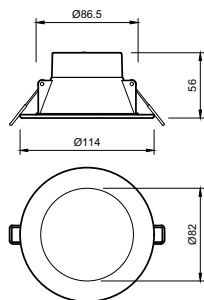
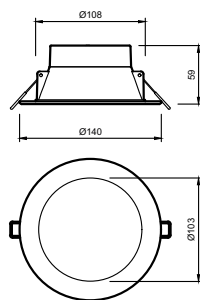
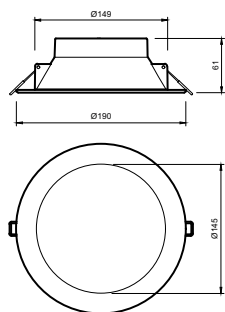
Features

- Trailing/leading edge dimmable
- Select from 3 colour temperatures with a slide of the dial
- IP54 front cover
- High efficiency for energy savings

Application

- Residential and general lighting

Dimensional drawing



SmartBright LED Downlight DN029B

General Information	
Light source replaceable	No
Light Technical	
Correlated Color Temperature (Nom)	3000 K
Color rendering index (CRI)	80
Operating and Electrical	
Protection class IEC	Safety class II
Input Voltage	220 to 240 V
Line Frequency	50 or 60 Hz
Controls and Dimming	
Dimmable	Yes
Mechanical and Housing	
Housing Color	White
Mech. impact protection code	IK03
Ingress protection code	IP40/54
Approval and Application	
Ambient temperature range	-20 to +40 °C

Light Technical

Order Code	Full Product Name	Luminous Efficacy (rated)	
		(Nom)	Luminous Flux
929002531219	DN029B G2 LED8/CCT PSR-E D90 CAU	106.00 lm/W	800 lm
929002531249	DN029B G2 LED8/CCT PSR-E D90 CAU 10-PK	106.00 lm/W	800 lm
929002531319	DN029B G2 LED8/CCT PSR-E D90 NZ	106.00 lm/W	800 lm
929002531419	DN029B G2 LED10/CCT PSR-E D120 CAU	111.00 lm/W	1,000 lm
929002531519	DN029B G2 LED10/CCT PSR-E D120 NZ	111.00 lm/W	1,000 lm
929002531619	DN029B G2 LED12/CCT PSR-E D150 CAU	114.00 lm/W	1,200 lm
929002531719	DN029B G2 LED20/CCT PSR-E D200 CAU	111.00 lm/W	2,000 lm
929002531849	DN029B G2 LED8/WW PSR-E D90 CAU 20-PK	106.00 lm/W	800 lm

Operating and Electrical

Order Code	Full Product Name	Power Consumption
929002531219	DN029B G2 LED8/CCT PSR-E D90 CAU	7.5 W
929002531249	DN029B G2 LED8/CCT PSR-E D90 CAU 10-PK	7.5 W
929002531319	DN029B G2 LED8/CCT PSR-E D90 NZ	7.5 W
929002531419	DN029B G2 LED10/CCT PSR-E D120 CAU	9 W

Order Code	Full Product Name	Power Consumption
929002531519	DN029B G2 LED10/CCT PSR-E D120 NZ	9 W
929002531619	DN029B G2 LED12/CCT PSR-E D150 CAU	10.5 W
929002531719	DN029B G2 LED20/CCT PSR-E D200 CAU	18 W
929002531849	DN029B G2 LED8/WW PSR-E D90 CAU 20-PK	7.5 W

Initial Performance (IEC Compliant)

Order Code	Full Product Name	Initial chromaticity
929002531219	DN029B G2 LED8/CCT PSR-E D90 CAU	(3000K@, 0.4400, 0.4030;
		4000K@0.37600.3656;
		6500K@0.31300.3370) 6
929002531249	DN029B G2 LED8/CCT PSR-E D90 CAU 10-PK	(3000K@, 0.4400, 0.4030;
		4000K@0.37600.3656;
		6500K@0.31300.3370) 6
929002531319	DN029B G2 LED8/CCT PSR-E D90 NZ	(3000K@, 0.4400, 0.4030;
		4000K@0.37600.3656;
		6500K@0.31300.3370) 6
929002531419	DN029B G2 LED10/CCT PSR-E D120 CAU	(3000K@, 0.4400, 0.4030;
		4000K@0.37600.3656;
		6500K@0.31300.3370) 6

Order Code	Full Product Name	Initial chromaticity
929002531519	DN029B G2 LED10/CCT PSR-E D120 NZ	(3000K@, 0.4400, 0.4030;
		4000K@0.37600.3656;
		6500K@0.31300.3370) 6
929002531619	DN029B G2 LED12/CCT PSR-E D150 CAU	(3000K@, 0.4400, 0.4030;
		4000K@0.37600.3656;
		6500K@0.31300.3370) 6
929002531719	DN029B G2 LED20/CCT PSR-E D200 CAU	(3000K@, 0.4400, 0.4030;
		4000K@0.37600.3656;
		6500K@0.31300.3370) 6
929002531849	DN029B G2 LED8/WW PSR-E D90 CAU 20-PK	(3000K@, 0.4400, 0.4030) 6

Over Time Performance (IEC Compliant)

Order Code	Full Product Name	Driver failure rate at
		5000 h
929002531219	DN029B G2 LED8/CCT PSR-E D90 CAU	1.2 %

Order Code	Full Product Name	Driver failure rate at
		5000 h
929002531249	DN029B G2 LED8/CCT PSR-E D90 CAU 10-PK	1.2 %

SmartBright LED Downlight DN029B

Order Code	Full Product Name	Driver failure rate at 5000 h
929002531319	DN029B G2 LED8/CCT PSR-E D90 NZ	1.2 %
929002531419	DN029B G2 LED10/CCT PSR-E D120 CAU	1.2 %
929002531519	DN029B G2 LED10/CCT PSR-E D120 NZ	1.2 %

Order Code	Full Product Name	Driver failure rate at 5000 h
929002531619	DN029B G2 LED12/CCT PSR-E D150 CAU	1.2 %
929002531719	DN029B G2 LED20/CCT PSR-E D200 CAU	1.2 %
929002531849	DN029B G2 LED8/WW PSR-E D90 CAU 20-PK	1.6 %

