



For every project where light really matters. A slim fit

CoreLine SlimDownlight

CoreLine slimdownlight delivers on the CoreLine promise of innovative, easy to use and high-quality indoor LED downlights. CoreLine slimdownlight is an innovative range of recessed and surface-mounted luminaires. It is designed to provide uniform lighting across multiple application areas. With instant energy savings and a longer lifetime, this is an environmentally friendly and cost saving solution. Its MultiColorTemp feature offers a choice of two color temperatures in a single luminaire. This makes it easy to select the right product, gives you the flexibility respond to customer preferences on site, and means fewer product codes on stock. Simple and easy installation means our slim downlight fits the same size cut-out, while the minimal built-in depth of 34mm makes this product an ideal space saving solution, especially for projects with limited fitting space. InterAct Ready option with integrated wireless communications in this family is available, to be used with InterAct gateways, sensors and software.

Benefits

- MultiColorTemp option to change color temperature on site and simplify product selection
- Energy saving and longer lifetime to reduce overall operating costs
- Covers recessed and surface-mounted installations
- Fits suspended ceilings with low space (Product height < 50mm)
- Surface of light effect creates a comfortable, uniform look

CoreLine SlimDownlight

Features

- MultiColorTemp feature: two color temperature options in a single luminaire (3000K-4000K)
- Recessed (DN145B) and surface-mounted versions (DN145C)
- Energy-efficient with a long lifespan: up to 100lm/W and 50,000 hours @L70
- Push-in connector with through-wiring option
- Multiple light output options: 650/1100/2100 lumen
- Color temperature: 3000K and 4000K
- Choice of drivers; DALI and wireless with Interact ready
- Total height (including driver): 34mm recessed; 50mm surface mounted

Application

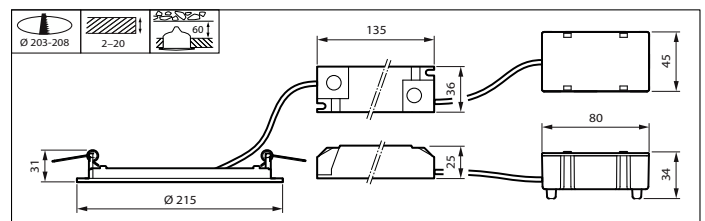
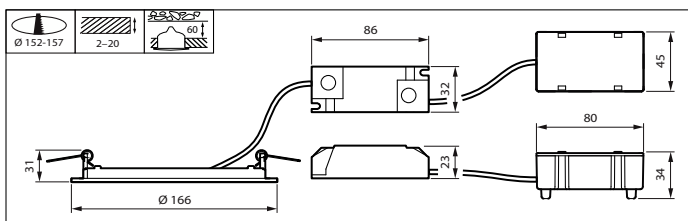
- Corridors
- Retail stores
- Reception areas
- Restrooms
- Technical rooms

Versions

Coreline SlimDownlight-DN145B 20S

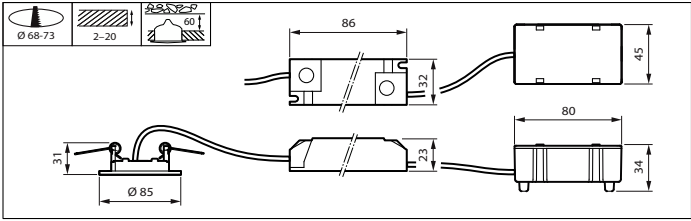
Coreline SlimDownlight-DN145B 6S

Dimensional drawing



CoreLine SlimDownlight

Dimensional drawing



Product details

CoreLine SlimDownlight 2100lm
side view



CoreLine SlimDownlight 2100lm
with PSU driver and easy
connector



CoreLine SlimDownlight 2100lm



CoreLine SlimDownlight

General Information	
Driver included	Yes
Light source replaceable	No
Number of gear units	1 unit
Service tag	Yes
Light Technical	
Beam angle of light source	120 degree(s)
Correlated Color Temperature (Nom)	4000 K
Color rendering index (CRI)	>80
Optic type	Beam angle 90°
Operating and Electrical	
Protection class IEC	Safety class II
Input Voltage	220 to 240 V
Line Frequency	50 or 60 Hz
Suitable for random switching	Yes
Controls and Dimming	
Maximum dim level	Not applicable
Mechanical and Housing	
Housing Color	White
Mech. impact protection code	IK02
Ingress protection code	IP20/44
Approval and Application	
Ambient temperature range	0 to +35 °C
CE mark	Yes
ENEC mark	ENEC mark
Flammability mark	For mounting on normally flammable surfaces
Glow-wire test	Temperature 650 °C, duration 30 s
Flickering value (PstLM) - Flickering value as per EN 61000-3-3	1
Initial Performance (IEC Compliant)	
Initial chromaticity	(0.38212,0.38031) SDCM<3
Luminous flux tolerance	+/-10%

General Information

Order Code	Full Product Name	Lamp family code
910505101198	DN145B LED20S/840 WIA-E WH	-
910500465902	DN145B LED10S/840 PSD-E II WH	LED10S
910505101196	DN145B LED10S/840 WIA-E WH	-
911401806080	DN145B LED10S/840 PSU II WH	LED10S
911401805880	DN145B LED6S/840 PSU II WH	LED6S

Light Technical

Order Code	Full Product Name	Luminous Efficacy (rated) (Nom)	Luminous Flux	Number of light sources
910505101198	DN145B LED20S/840 WIA-E WH	93 lm/W	2,100 lm	-
910500465902	DN145B LED10S/840 PSD-E II WH	85 lm/W	1,100 lm	1

Order Code	Full Product Name	Luminous Efficacy (rated) (Nom)	Luminous Flux	Number of light sources
910505101196	DN145B LED10S/840 WIA-E WH	93 lm/W	1,100 lm	-
911401806080	DN145B LED10S/840 PSU II WH	100 lm/W	1,100 lm	1

CoreLine SlimDownlight

Order Code	Full Product Name	Luminous	Luminous	Number of
		Efficacy (rated)		
		(Nom)	Flux	light
				sources
911401805880	DN145B LED6S/840	100 lm/W	650 lm	1
	PSU II WH			

Operating and Electrical

Order Code	Full Product Name	Power Consumption
910505101198	DN145B LED20S/840 WIA-E WH	22.5 W
910500465902	DN145B LED10S/840 PSD-E II WH	13 W
910505101196	DN145B LED10S/840 WIA-E WH	13 W

Order Code	Full Product Name	Power Consumption
911401806080	DN145B LED10S/840 PSU II WH	11 W
911401805880	DN145B LED6S/840 PSU II WH	6.5 W

Controls and Dimming

Order Code	Full Product Name	Dimmable
910505101198	DN145B LED20S/840 WIA-E WH	Yes
910500465902	DN145B LED10S/840 PSD-E II WH	Yes
910505101196	DN145B LED10S/840 WIA-E WH	Yes

Order Code	Full Product Name	Dimmable
911401806080	DN145B LED10S/840 PSU II WH	No
911401805880	DN145B LED6S/840 PSU II WH	No

Mechanical and Housing

Order Code	Full Product Name	Optical cover type
910505101198	DN145B LED20S/840 WIA-E WH	-
910500465902	DN145B LED10S/840 PSD-E II WH	Opal
910505101196	DN145B LED10S/840 WIA-E WH	-

Order Code	Full Product Name	Optical cover type
911401806080	DN145B LED10S/840 PSU II WH	Opal
911401805880	DN145B LED6S/840 PSU II WH	Opal

Approval and Application

Order Code	Full Product Name	Stroboscopic effect visibility
		measure (SVM)
910505101198	DN145B LED20S/840 WIA-E WH	0.4
910500465902	DN145B LED10S/840 PSD-E II WH	0.4
910505101196	DN145B LED10S/840 WIA-E WH	0.4

Order Code	Full Product Name	Stroboscopic effect visibility
		measure (SVM)
911401806080	DN145B LED10S/840 PSU II WH	1.6
911401805880	DN145B LED6S/840 PSU II WH	1.6

Over Time Performance (IEC Compliant)

Order Code	Full Product Name	Driver failure rate at 5000 h
910505101198	DN145B LED20S/840 WIA-E WH	-
910500465902	DN145B LED10S/840 PSD-E II WH	0.0015 %
910505101196	DN145B LED10S/840 WIA-E WH	-

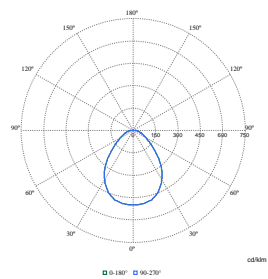
Order Code	Full Product Name	Driver failure rate at 5000 h
911401806080	DN145B LED10S/840 PSU II WH	0.0015 %
911401805880	DN145B LED6S/840 PSU II WH	-

Product Data

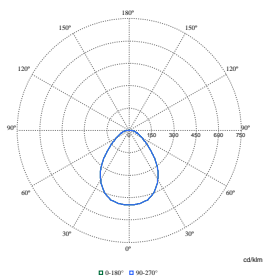
Order Code	Full Product Name	Product family code
910505101198	DN145B LED20S/840 WIA-E WH	DN145B
910500465902	DN145B LED10S/840 PSD-E II WH	DN145B
910505101196	DN145B LED10S/840 WIA-E WH	DN145B

Order Code	Full Product Name	Product family code
911401806080	DN145B LED10S/840 PSU II WH	-
911401805880	DN145B LED6S/840 PSU II WH	-

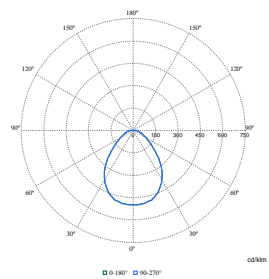
Polar Wide Diagrams



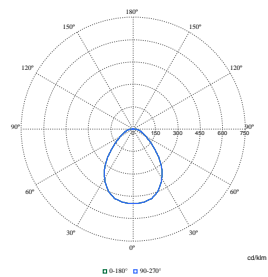
Polar Normal (separate) - DN145BI - 910500465902



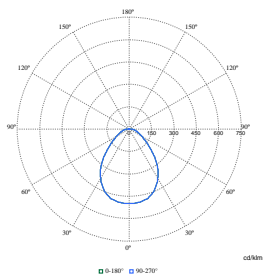
Polar Normal (separate) - DN145BI - 910505101196



Polar Normal (separate) - DN145BI - 910505101198



Polar Normal (separate) - null - 911401805880



Polar Normal (separate) - null - 911401806080

