



Philips CoreLine Downlight: easy installation, excellent illumination

CoreLine Downlight gen5

Philips CoreLine Downlight delivers on the CoreLine promise of innovative, easy to use and high-quality recessed downlights. The CoreLine Downlight range is suitable for one-to-one conventional luminaire replacements, with an attractive TCO that helps your customers make the switch to LED. These recessed indoor downlights offer uniform light distribution for use in general lighting and office applications (UGR 19). They also deliver instant energy savings and have a much longer lifetime, creating a solution that's environmentally friendly and real value-for-money. CoreLine DN142B recessed downlights are easy to install thanks to their standard cut-out size and push-in connectors. An Interact ready option with integrated wireless communications is also available in this family, which can be used with Interact gateways, sensors and software.

Benefits

- Energy saving and longer lifetime to reduce overall operating costs
- One-to-one replacement makes it easy to switch to LED
- Low glare suitable for office applications

CoreLine Downlight gen5

Features

- Available in two cut-out sizes (150mm and 200mm)
- White reflector downlight UGR 25
- Aluminum reflector downlight UGR 19
- Energy efficient: up to 120 lm/W
- Choice of color temperatures: 3000K and 4000K
- Choice of drivers; DALI and wireless with Interact ready
- Optional emergency lighting versions available
- Optional IP54 versions available

Application

- Offices
- Indoor general areas
- Reception and lounge
- Meeting rooms
- Corridors

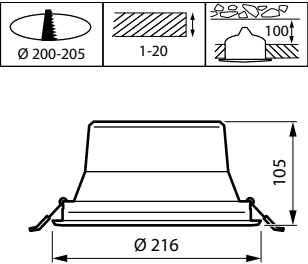
Warnings and Safety

- Do not apply excessive force to the cable & DC connector, make sure the connector clip is locked before the power is on.

Specifications

Ceiling type	Plaster (board) ceiling	Color Rendering index -	>80
Dimming	PSU: non-DimmablePSD: Dimmable (DALI-broadcasting)WIA: Wireless control, compatible with Interact	CRI	
Control gear failure rate at median useful life	50.000h	Driver replaceable	Yes

Dimensional drawing



CoreLine Downlight gen5

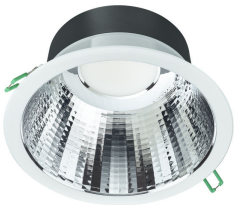
Product details



CoreLine Downlight DN142B
Compact with White Reflector
(WR)



CoreLine Downlight DN142B
Compact with White Reflector
(WR)



CoreLine Downlight DN142B
Compact with UGR19

CoreLine Downlight gen5

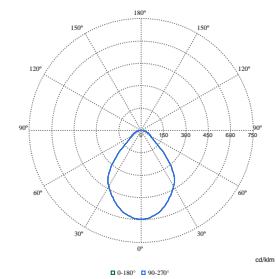
General Information	
Driver included	Yes
Light source replaceable	No
Number of gear units	1 unit
Service tag	Yes
Light Technical	
Beam angle of light source	- degree(s)
Correlated Color Temperature (Nom)	4000 K
Color rendering index (CRI)	>80
Luminous Efficacy (rated) (Nom)	122 lm/W
Luminous Flux	2,350 lm
Optic type	-
Operating and Electrical	
Protection class IEC	Safety class II
Input Voltage	220-240 V
Line Frequency	50 to 60 Hz
Power Consumption	19.2 W
Suitable for random switching	Yes
Controls and Dimming	
Dimmable	No
Maximum dim level	Not applicable
Mechanical and Housing	
Housing Color	White
Mech. impact protection code	IK02
Approval and Application	
Ambient temperature range	-20 to +40 °C
CE mark	Yes
ENEC mark	-
Flammability mark	For mounting on normally flammable surfaces
Glow-wire test	Temperature 650 °C, duration 30 s
Flickering value (PstLM) - Flickering value as per EN 61000-3-3	0.5
Stroboscopic effect visibility measure (SVM)	1
Initial Performance (IEC Compliant)	
Initial chromaticity	(0.380,0.377) SDCM≤5
Luminous flux tolerance	+/-10%

Mechanical and Housing

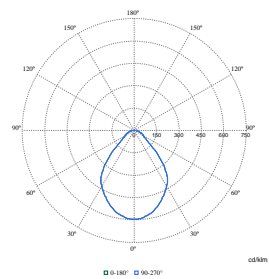
Order Code	Full Product Name	Ingress protection code
911401552232	DN142B 20S/840 PSU-E WR	IP20
911401552332	DN142B 20S/840 PSU-E WR IP54	IP20/54

CoreLine Downlight gen5

Polar Wide Diagrams



Polar Normal (separate) - null - 911401552332



Polar Normal (separate) - null - 911401552232

