



# Philips CoreLine Downlight: easy installation, excellent illumination

## CoreLine Downlight gen5

Philips CoreLine Downlight delivers on the CoreLine promise of innovative, easy to use and high-quality recessed downlights. The CoreLine Downlight range is suitable for one-to-one conventional luminaire replacements, with an attractive TCO that helps your customers make the switch to LED. These recessed indoor downlights offer uniform light distribution for use in general lighting and office applications (UGR 19). They also deliver instant energy savings and have a much longer lifetime, creating a solution that's environmentally friendly and real value-for-money. CoreLine DN142B recessed downlights are easy to install thanks to their standard cut-out size and push-in connectors. An Interact ready option with integrated wireless communications is also available in this family, which can be used with Interact gateways, sensors and software.

### Benefits

- Energy saving and longer lifetime to reduce overall operating costs
- One-to-one replacement makes it easy to switch to LED
- Low glare suitable for office applications

# CoreLine Downlight gen5

## Features

- Available in two cut-out sizes (150mm and 200mm)
- White reflector downlight UGR 25
- Aluminum reflector downlight UGR 19
- Energy efficient: up to 120 lm/W
- Choice of color temperatures: 3000K and 4000K
- Choice of drivers; DALI and wireless with Interact ready
- Optional emergency lighting versions available
- Optional IP54 versions available

## Application

- Offices
- Indoor general areas
- Reception and lounge
- Meeting rooms
- Corridors

## Warnings and Safety

- Do not apply excessive force to the cable & DC connector, make sure the connector clip is locked before the power is on.

## Specifications

Ceiling type	Plaster (board) ceiling	Color Rendering index -	>80
Dimming	PSU: non-DimmablePSD: Dimmable (DALI-broadcasting)WIA: Wireless control, compatible with Interact	CRI	
Control gear failure rate at median useful life	50.000h	Driver replaceable	Yes

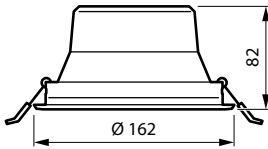
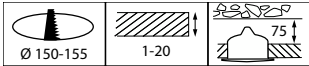
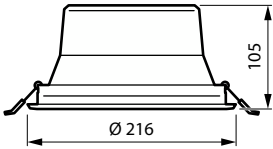
## Versions



CoreLine Downlight DN142B  
Compact with White Reflector  
(WR)

# CoreLine Downlight gen5

## Dimensional drawing



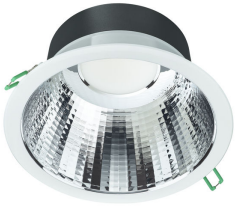
## Product details



CoreLine Downlight DN142B  
Compact with White Reflector  
(WR)



CoreLine Downlight DN142B  
Compact with White Reflector  
(WR)



CoreLine Downlight DN142B  
Compact with UGR19

CoreLine Downlight gen5

General Information	
Driver included	Yes
Number of gear units	1 unit
Service tag	Yes
Light Technical	
Beam angle of light source	- degree(s)
Correlated Color Temperature (Nom)	4000 K
Color rendering index (CRI)	>80
Operating and Electrical	
Protection class IEC	Safety class II
Line Frequency	50 to 60 Hz
Suitable for random switching	Yes
Mechanical and Housing	
Housing Color	White
Mech. impact protection code	IK02
Approval and Application	
Ambient temperature range	-20 to +40 °C
CE mark	Yes
ENEC mark	-
Flammability mark	For mounting on normally flammable surfaces
Glow-wire test	Temperature 650 °C, duration 30 s
Stroboscopic effect visibility measure (SVM)	1
Initial Performance (IEC Compliant)	
Initial chromaticity	(0.380,0.377) SDCM≤5

General Information

Order Code	Full Product Name	Light source replaceable
910505103605	DN142B 10S/840 PSD-E WR ELB3	-
911401551432	DN142B 10S/840 PSU-E WR	No
911401551532	DN142B 10S/840 PSU-E WR IP54	No
910505103599	DN142B 20S/840 PSD-E WR IP54	-
910505103617	DN142B 20S/840 WIA-E WR ELB3 IP54	-

Light Technical

Order Code	Full Product Name	Luminous Efficacy (rated) (Nom)	Luminous Flux	Optic type
910505103605	DN142B 10S/840 PSD-E WR ELB3	80 lm/W	1,200 lm	White reflector perforated without louver
911401551432	DN142B 10S/840 PSU-E WR	122 lm/W	1,200 lm	-
911401551532	DN142B 10S/840 PSU-E WR IP54	122 lm/W	1,200 lm	-

Order Code	Full Product Name	Luminous Efficacy (rated) (Nom)	Luminous Flux	Optic type
910505103599	DN142B 20S/840 PSD-E WR IP54	116 lm/W	2,350 lm	White reflector perforated without louver
910505103617	DN142B 20S/840 WIA-E WR ELB3 IP54	95 lm/W	2,350 lm	White reflector perforated without louver

Operating and Electrical

CoreLine Downlight gen5

Order Code	Full Product Name	Input Voltage	Power Consumption
910505103605	DN142B 10S/840 PSD-E WR ELB3	220 to 240 V	14.9 W
911401551432	DN142B 10S/840 PSU-E WR	220-240 V	9.8 W
911401551532	DN142B 10S/840 PSU-E WR IP54	220-240 V	9.8 W

Controls and Dimming

Order Code	Full Product Name	Dimmable	Maximum dim level
910505103605	DN142B 10S/840 PSD-E WR ELB3	Yes	-
911401551432	DN142B 10S/840 PSU-E WR	No	Not applicable
911401551532	DN142B 10S/840 PSU-E WR IP54	No	Not applicable

Mechanical and Housing

Order Code	Full Product Name	Ingress protection code
910505103605	DN142B 10S/840 PSD-E WR ELB3	IP20
911401551432	DN142B 10S/840 PSU-E WR	IP20
911401551532	DN142B 10S/840 PSU-E WR IP54	IP20/54

Emergency Operation

Order Code	Full Product Name	Central Emergency	Emergency lighting	Rated duration of the emergency lighting (when fully charged)
910505103605	DN142B 10S/840 PSD-E WR ELB3	No	Emergency lighting 3 hours duration basic version	3 hour(s)
911401551432	DN142B 10S/840 PSU-E WR	-	-	-
911401551532	DN142B 10S/840 PSU-E WR IP54	-	-	-

Approval and Application

Order Code	Full Product Name	Flickering value (PstLM) - Flickering value as per EN 61000-3-3
910505103605	DN142B 10S/840 PSD-E WR ELB3	-
911401551432	DN142B 10S/840 PSU-E WR	0.5
911401551532	DN142B 10S/840 PSU-E WR IP54	0.5

Initial Performance (IEC Compliant)

Order Code	Full Product Name	Luminous flux tolerance
910505103605	DN142B 10S/840 PSD-E WR ELB3	-10% / +10%
911401551432	DN142B 10S/840 PSU-E WR	+/-10%
911401551532	DN142B 10S/840 PSU-E WR IP54	+/-10%

Order Code	Full Product Name	Input Voltage	Power Consumption
910505103599	DN142B 20S/840 PSD-E WR IP54	220 to 240 V	20.5 W
910505103617	DN142B 20S/840 WIA-E WR ELB3 IP54	220 to 240 V	24.9 W

Order Code	Full Product Name	Dimmable	Maximum dim level
910505103599	DN142B 20S/840 PSD-E WR IP54	Yes	-
910505103617	DN142B 20S/840 WIA-E WR ELB3 IP54	Yes	-

Order Code	Full Product Name	Ingress protection code
910505103599	DN142B 20S/840 PSD-E WR IP54	IP20/54
910505103617	DN142B 20S/840 WIA-E WR ELB3 IP54	IP20/54

Order Code	Full Product Name	Central Emergency	Emergency lighting	Rated duration of the emergency lighting (when fully charged)
910505103599	DN142B 20S/840 PSD-E WR IP54	No	-	-
910505103617	DN142B 20S/840 WIA-E WR ELB3 IP54	No	Emergency lighting 3 hours duration basic version	3 hour(s)

Order Code	Full Product Name	Flickering value (PstLM) - Flickering value as per EN 61000-3-3
910505103599	DN142B 20S/840 PSD-E WR IP54	-
910505103617	DN142B 20S/840 WIA-E WR ELB3 IP54	-

Order Code	Full Product Name	Luminous flux tolerance
910505103599	DN142B 20S/840 PSD-E WR IP54	-10% / +10%
910505103617	DN142B 20S/840 WIA-E WR ELB3 IP54	-10% / +10%

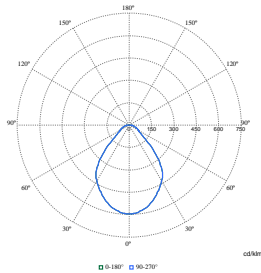
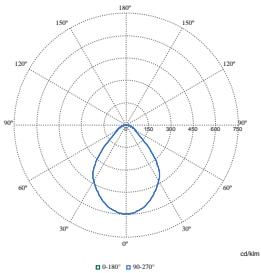
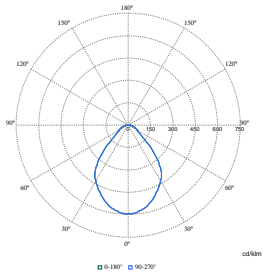
# CoreLine Downlight gen5

## Product Data

Order Code	Full Product Name	Product family code
910505103605	DN142B 10S/840 PSD-E WR ELB3	DN142B
911401551432	DN142B 10S/840 PSU-E WR	-
911401551532	DN142B 10S/840 PSU-E WR IP54	-

Order Code	Full Product Name	Product family code
910505103599	DN142B 20S/840 PSD-E WR IP54	DN142B
910505103617	DN142B 20S/840 WIA-E WR ELB3 IP54	DN142B

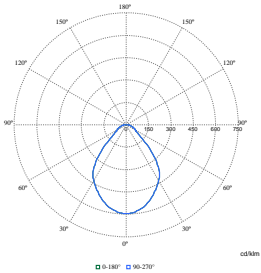
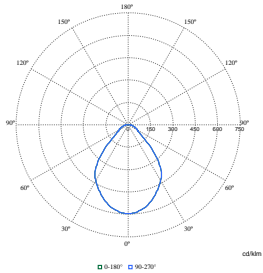
## Polar Wide Diagrams



Polar Normal (separate) - DN142BI - 910505103605

Polar Normal (separate) - DN142BI - 910505103599

Polar Normal (separate) - DN142BI - 910505103617



Polar Normal (separate) - null - 911401551432

Polar Normal (separate) - null - 911401551532

