



# LuxSpace surface-mounted – high efficiency, visual comfort and a stylish design

## LuxSpace, surface mounted

Customers are looking to optimize all their resources, and that means not just their running costs (energy, etc.) but also their human resources. Energy savings are therefore a priority, but they must not have an adverse effect on the well-being of employees, who need a pleasant environment in order to be more productive, or on customers, who want to enjoy their shopping experience. LuxSpace provides the perfect combination of efficiency, light comfort and design, without compromising on lighting performance (color rendering and color uniformity). It offers a wide choice of options for creating the desired ambience, no matter the application.

### Benefits

- Product which delivers visual comfort and stylish design
- Creates a gentle, natural light, ensuring visual comfort

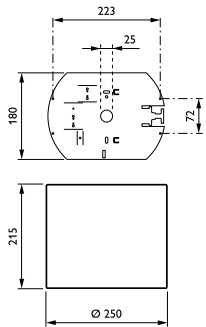
### Features

- Choice of four optics: high-gloss, faceted, matt and white
- Heights: deep (up to UGR 19), low (up to UGR 22)
- Light color: 830, 840, 927, 930 and 940 (CRI90 versions upon request)
- Colors: high-gloss metalized, white (RAL9003), grey (RAL9006), black (RAL9004) as standard (any other RAL color possible upon request)
- Compliant for central emergency lighting with DC (upon request)
- 3C track and pendant version (upon request)

### Application

- Offices
- Retail
- Hospitals
- Hotels
- Airports

### Dimensional drawing



LuxSpace, surface mounted

General Information	
Driver included	Yes
Light source replaceable	No
Number of gear units	1 unit
Service tag	Yes
Light Technical	
Color rendering index (CRI)	>80
Luminous Flux	2,200 lm
Optic type	-
Operating and Electrical	
Protection class IEC	Safety class I
Input Voltage	220 to 240 V
Line Frequency	50 to 60 Hz
Suitable for random switching	Yes
Mechanical and Housing	
Housing Color	White
Mech. impact protection code	IK02
Ingress protection code	IP20
Approval and Application	
Ambient temperature range	+10 to +25 °C
CE mark	Yes
ENEC mark	ENEC mark
Flammability mark	For mounting on normally flammable surfaces
Glow-wire test	Temperature 650 °C, duration 30 s
Initial Performance (IEC Compliant)	
Luminous flux tolerance	+/-10%
Product Data	
Product family code	DN570C

Light Technical

Order Code	Full Product Name	Correlated Color	Luminous Efficacy (rated)
		Temperature (Nom)	(Nom)
910505100959	DN570C LED20S/830 PSU-E C WH	3000 K	134 lm/W
910505100960	DN570C LED20S/840 PSU-E C WH	4000 K	149 lm/W
910505100963	DN570C LED20S/830 DIA-VLC-E C WH	3000 K	134 lm/W
910505100964	DN570C LED20S/840 DIA-VLC-E C WH	4000 K	149 lm/W

Operating and Electrical

Order Code	Full Product Name	Power Consumption
910505100959	DN570C LED20S/830 PSU-E C WH	16.4 W
910505100960	DN570C LED20S/840 PSU-E C WH	14.8 W

Order Code	Full Product Name	Power Consumption
910505100963	DN570C LED20S/830 DIA-VLC-E C WH	16.4 W
910505100964	DN570C LED20S/840 DIA-VLC-E C WH	14.8 W

Controls and Dimming

Order Code	Full Product Name	Maximum dim	
		Dimmable	level
910505100959	DN570C LED20S/830 PSU-E C WH	No	-
910505100960	DN570C LED20S/840 PSU-E C WH	No	-

Order Code	Full Product Name	Maximum dim	
		Dimmable	level
910505100963	DN570C LED20S/830 DIA-VLC-E C WH	Yes	1%
910505100964	DN570C LED20S/840 DIA-VLC-E C WH	Yes	1%

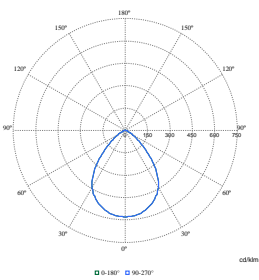
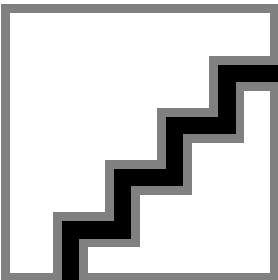
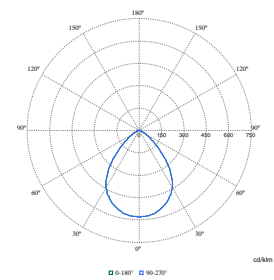
Initial Performance (IEC Compliant)

LuxSpace, surface mounted

Order Code	Full Product Name	Initial chromaticity
910505100959	DN570C LED20S/830 PSU-E C WH	(0.43, 0.40) SDCM <2
910505100960	DN570C LED20S/840 PSU-E C WH	(0.38, 0.38) SDCM <2

Order Code	Full Product Name	Initial chromaticity
910505100963	DN570C LED20S/830 DIA-VLC-E C WH	(0.43, 0.40) SDCM <2
910505100964	DN570C LED20S/840 DIA-VLC-E C WH	(0.38, 0.38) SDCM <2

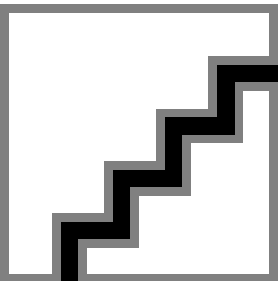
Polar Wide Diagrams



Polar Normal (separate) - DN570BI - 910505100959

Polar Normal (separate) - DN570BI - 910505100960

Polar Normal (separate) - DN570BI - 910505100964



Polar Normal (separate) - DN570BI - 910505100963

