



# LuxSpace 2 surface-mounted – high efficiency, visual comfort and a stylish design

## LuxSpace, surface mounted

Customers are looking to optimise all their resources, and that means not just their running costs (energy, etc.) but also their human resources. Energy savings are therefore a priority, but they must not have an adverse effect on the well-being of employees, who need a pleasant environment in order to be more productive, or on customers, who want to enjoy their shopping experience. LuxSpace provides the perfect combination of efficiency, light comfort and design, without compromising on lighting performance (colour rendering and colour uniformity). It offers a wide choice of options for creating the desired ambience, no matter the application.

### Benefits

- Best-in-class efficacy
- Creates a gentle, natural light, ensuring visual comfort

### Features

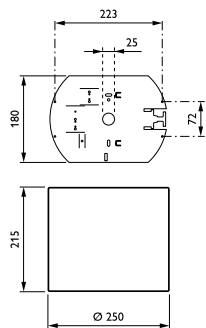
- Choice of four optics: high-gloss, faceted, matt and white
- Heights: deep (up to UGR 19), low (up to UGR 22)
- Colour temperature: CRI80 3000K or 4000K and CRI90 2700K, 3000K, 4000K
- Colours: high-gloss metalized, white (RAL9010), grey (RAL9006), black (RAL9005) as standard (any other RAL colour possible upon request)
- Compliant for central emergency lighting with DC

## LuxSpace, surface mounted

### Application

- Offices
- Retail
- Hospitals
- Hotels
- Airports

### Dimensional drawing



## LuxSpace, surface mounted

### General Information

Driver included	Yes
Light source replaceable	No
Number of gear units	Unit
Service Tag	Yes

### Light Technical

Correlated Colour Temperature (Nom)	4000 K
Colour rendering index (CRI)	>80
Optic type	-

### Operating and Electrical

Protection class IEC	Safety class I
Input Voltage	220 to 240 V
Line Frequency	50 to 60 Hz
Suitable for random switching	Yes

### Mechanical and Housing

Housing Colour	White
Mech. impact protection code	IK02
Ingress protection code	IP20

### Approval and Application

Ambient temperature range	+10 to +25 °C
CE mark	Yes
ENEC mark	ENEC mark
Flammability mark	For mounting on normally flammable surfaces
Glow-wire test	Temperature 650 °C, duration 30 s

### Initial Performance (IEC Compliant)

Initial chromaticity	(0.38, 0.38) SDCM <2
Luminous flux tolerance	+/-10%

### Light Technical

Order Code	Full Product Name	Luminous efficacy (rated) (nom.)	Luminous Flux
97089500	DN570C LED20S/840 PSU-E C WH	149 lm/W	2,200 lm
97091800	DN571C LED20S/840 PSU-E C WH	149 lm/W	2,200 lm
97093200	DN570C LED20S/840 DIA-VLC-E C WH	149 lm/W	2,200 lm
97095600	DN571C LED20S/840 DIA-VLC-E C WH	149 lm/W	2,200 lm
97103800	DN570C LED40S/840 PSU-E C WH	147 lm/W	4,400 lm
97105200	DN570C LED40S/840 DIA-VLC-E C WH	147 lm/W	4,400 lm

### Operating and Electrical

Order Code	Full Product Name	Power Consumption
97089500	DN570C LED20S/840 PSU-E C WH	14.8 W
97091800	DN571C LED20S/840 PSU-E C WH	14.8 W
97093200	DN570C LED20S/840 DIA-VLC-E C WH	14.8 W

Order Code	Full Product Name	Power Consumption
97095600	DN571C LED20S/840 DIA-VLC-E C WH	14.8 W
97103800	DN570C LED40S/840 PSU-E C WH	30 W
97105200	DN570C LED40S/840 DIA-VLC-E C WH	30 W

### Controls and Dimming

Order Code	Full Product Name	Dimmable	Maximum dim level
97089500	DN570C LED20S/840 PSU-E C WH	No	-
97091800	DN571C LED20S/840 PSU-E C WH	No	-
97093200	DN570C LED20S/840 DIA-VLC-E C WH	Yes	1%

Order Code	Full Product Name	Dimmable	Maximum dim level
97095600	DN571C LED20S/840 DIA-VLC-E C WH	Yes	1%
97103800	DN570C LED40S/840 PSU-E C WH	No	-
97105200	DN570C LED40S/840 DIA-VLC-E C WH	Yes	1%

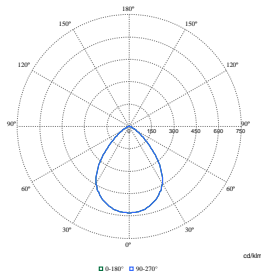
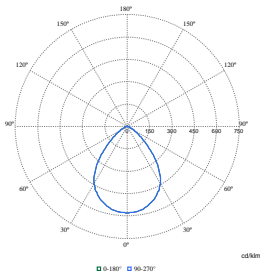
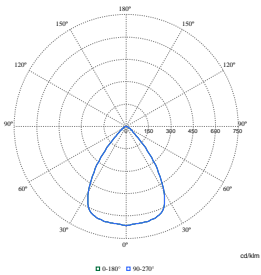
### Product Data

LuxSpace, surface mounted

Order Code	Full Product Name	Product family code
97089500	DN570C LED20S/840 PSU-E C WH	DN570C
97091800	DN571C LED20S/840 PSU-E C WH	DN571C
97093200	DN570C LED20S/840 DIA-VLC-E C WH	DN570C

Order Code	Full Product Name	Product family code
97095600	DN571C LED20S/840 DIA-VLC-E C WH	DN571C
97103800	DN570C LED40S/840 PSU-E C WH	DN570C
97105200	DN570C LED40S/840 DIA-VLC-E C WH	DN570C

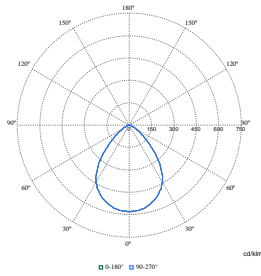
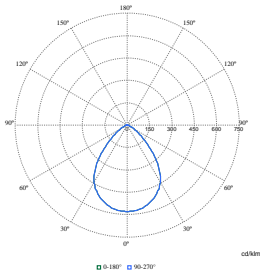
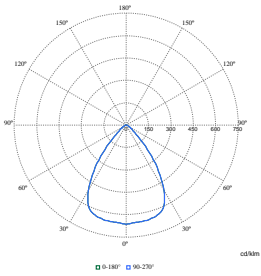
Polar Wide Diagrams



Polar Normal (separate) - DN570BI - 910505100962

Polar Normal (separate) - DN570BI - 910505100960

Polar Normal (separate) - DN570BI - 910505100974



Polar Normal (separate) - DN570BI - 910505100966

Polar Normal (separate) - DN570BI - 910505100976

Polar Normal (separate) - DN570BI - 910505100964

