



# LuxSpace 2 surface-mounted – high efficiency, visual comfort and a stylish design

## LuxSpace, surface mounted

Customers are looking to optimize all their resources, and that means not just their running costs (energy, etc.) but also their human resources. Energy savings are therefore a priority, but they must not have an adverse effect on the well-being of employees, who need a pleasant environment in order to be more productive, or on customers, who want to enjoy their shopping experience. LuxSpace provides the perfect combination of efficiency, light comfort and design, without compromising on lighting performance (color rendering and color uniformity). It offers a wide choice of options for creating the desired ambience, no matter the application.

### Benefits

- Best-in-class efficacy
- Best-in-class efficacy
- Creates a gentle, natural light, ensuring visual comfort
- Creates a gentle, natural light, ensuring visual comfort

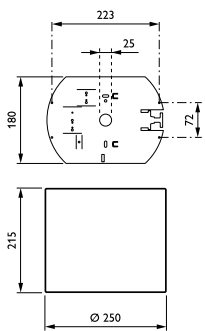
## Features

- Choice of four optics: high-gloss, faceted, matt and white
- Choice of four optics: high-gloss, faceted, matt and white
- Heights: deep (up to UGR 19), low (up to UGR 22)
- Heights: deep (up to UGR 19), low (up to UGR 22)
- Color temperature: 3000 or 4000 K
- Color temperature: 3000 or 4000 K
- Colors: high-gloss metalized, white (RAL9010), grey, black (RAL9005) as standard (any other RAL color possible upon request)
- Colors: high-gloss metalized, white (RAL9010), grey, black (RAL9005) as standard (any other RAL color possible upon request)
- Recessed version available
- Recessed version available
- Compliant for central emergency lighting with DC
- Compliant for central emergency lighting with DC
- 3C track version (upon request)
- 3C track version (upon request)
- Multiple additional options: PG and PGO, suspended deco glass
- Multiple additional options: PG and PGO, suspended deco glass

## Application

- Offices
- Offices
- Retail
- Retail
- Hospitals
- Hospitals
- Hotels
- Hotels
- Airports
- Airports

## Dimensional drawing



LuxSpace, surface mounted

General Information	
Driver included	Yes
Light source replaceable	No
Number of gear units	1 unit
Service tag	Yes
Light Technical	
Color rendering index (CRI)	>80
Optic type	-
Operating and Electrical	
Protection class IEC	Safety class I
Input Voltage	220 to 240 V
Line Frequency	50 to 60 Hz
Suitable for random switching	Yes
Mechanical and Housing	
Housing Color	White
Mech. impact protection code	IK02
Ingress protection code	IP20
Approval and Application	
Ambient temperature range	+10 to +25 °C
CE mark	Yes
ENEC mark	ENEC mark
Flammability mark	For mounting on normally flammable surfaces
Glow-wire test	Temperature 650 °C, duration 30 s
Initial Performance (IEC Compliant)	
Luminous flux tolerance	+/-10%

Light Technical

Order Code	Full Product Name	Correlated Color	Luminous Efficacy	Luminous Flux
		Temperature (Nom)	(rated) (Nom)	
910505100959	DN570C LED20S/830 PSU-E C WH	3000 K	134 lm/W	2,200 lm
910505100960	DN570C LED20S/840 PSU-E C WH	4000 K	149 lm/W	2,200 lm
910505100965	DN571C LED20S/830 DIA-VLC-E C WH	3000 K	134 lm/W	2,200 lm
910505100974	DN570C LED40S/840 PSU-E C WH	4000 K	147 lm/W	4,400 lm
910505100976	DN570C LED40S/840 DIA-VLC-E C WH	4000 K	147 lm/W	4,400 lm

Operating and Electrical

Order Code	Full Product Name	Power Consumption
910505100959	DN570C LED20S/830 PSU-E C WH	16.4 W
910505100960	DN570C LED20S/840 PSU-E C WH	14.8 W
910505100965	DN571C LED20S/830 DIA-VLC-E C WH	16.4 W

Order Code	Full Product Name	Power Consumption
910505100974	DN570C LED40S/840 PSU-E C WH	30 W
910505100976	DN570C LED40S/840 DIA-VLC-E C WH	30 W

Controls and Dimming

Order Code	Full Product Name	Maximum dim	
		Dimmable	level
910505100959	DN570C LED20S/830 PSU-E C WH	No	-
910505100960	DN570C LED20S/840 PSU-E C WH	No	-
910505100965	DN571C LED20S/830 DIA-VLC-E C WH	Yes	1%

Order Code	Full Product Name	Maximum dim	
		Dimmable	level
910505100974	DN570C LED40S/840 PSU-E C WH	No	-
910505100976	DN570C LED40S/840 DIA-VLC-E C WH	Yes	1%

Initial Performance (IEC Compliant)

Order Code	Full Product Name	Initial chromaticity
910505100959	DN570C LED20S/830 PSU-E C WH	(0.43, 0.40) SDCM <2
910505100960	DN570C LED20S/840 PSU-E C WH	(0.38, 0.38) SDCM <2
910505100965	DN571C LED20S/830 DIA-VLC-E C WH	(0.43, 0.40) SDCM <2

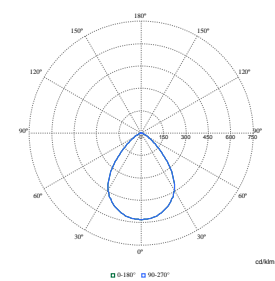
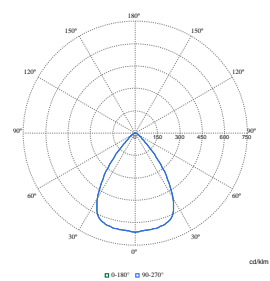
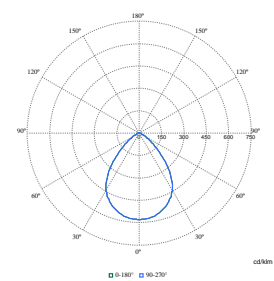
Order Code	Full Product Name	Initial chromaticity
910505100974	DN570C LED40S/840 PSU-E C WH	(0.38, 0.38) SDCM <2
910505100976	DN570C LED40S/840 DIA-VLC-E C WH	(0.38, 0.38) SDCM <2

Product Data

Order Code	Full Product Name	Product family code
910505100959	DN570C LED20S/830 PSU-E C WH	DN570C
910505100960	DN570C LED20S/840 PSU-E C WH	DN570C
910505100965	DN571C LED20S/830 DIA-VLC-E C WH	DN571C

Order Code	Full Product Name	Product family code
910505100974	DN570C LED40S/840 PSU-E C WH	DN570C
910505100976	DN570C LED40S/840 DIA-VLC-E C WH	DN570C

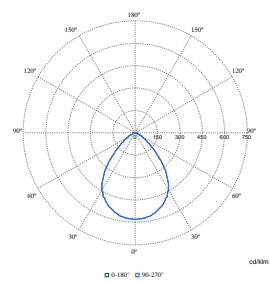
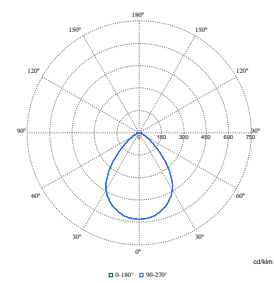
Polar Wide Diagrams



Polar Normal (separate) - DN570BI - 910505100959

Polar Normal (separate) - DN570BI - 910505100965

Polar Normal (separate) - DN570BI - 910505100960



Polar Normal (separate) - DN570BI - 910505100974

Polar Normal (separate) - DN570BI - 910505100976

## LuxSpace, surface mounted

