



# Robust design, compact form

## HF-Matchbox Blue

HF-Matchbox Blue is an affordable, reliable, compact, lightweight and high-frequency ballast for use with system wattages below 25 W in combination with TL mini, TL-D, TL5 and TL5c, PL-T/C, and PL-L/S lamps. The HF-M Blue range has a robust design, meets all relevant international safety and performance standards and has an energy efficiency index (CELMA EEI ) of A2. The ballast is primarily designed for Indoor application. For outdoor application, the luminaire should be minimum Classland need to be sufficiently protected against water & dust. The installation should also be guard against any lightening surge or any other necessary electrical protection as deemed in such typical installation & application.

### Benefits

- Automatic restart (after voltage dip or lamp exchange) ensures easy operation and hassle-free re-lamping.
- Suitable for use in class I or class II luminaires

### Features

- Suitable for emergency DC operation between 190 and 254 V
- Programmed, flicker-free, pre-heated start (<0.8 s); over 8,000 on/off switches on one lamp (depending on lamp/ballast combination)
- Automatic restart (after voltage dip or lamp exchange) ensures easy operation and hassle-free re-lamping.

HF-Matchbox Blue

Application

- Used with movement-detection control systems like Philips OccuPlus in applications where lamps burn for a long period of time and the switching cycle is infrequent (e.g. a maximum of three times per day)
- Mainly for indoor applications such as spotlights, downlights, light boxes, and emergency and security fixtures used largely in retail stores, office buildings, hotels, private homes and residential buildings
- Domestic applications such as outdoor garden lighting, garage areas, stairways

Versions



GPPR\_MTL-LH\_0002-Product photo

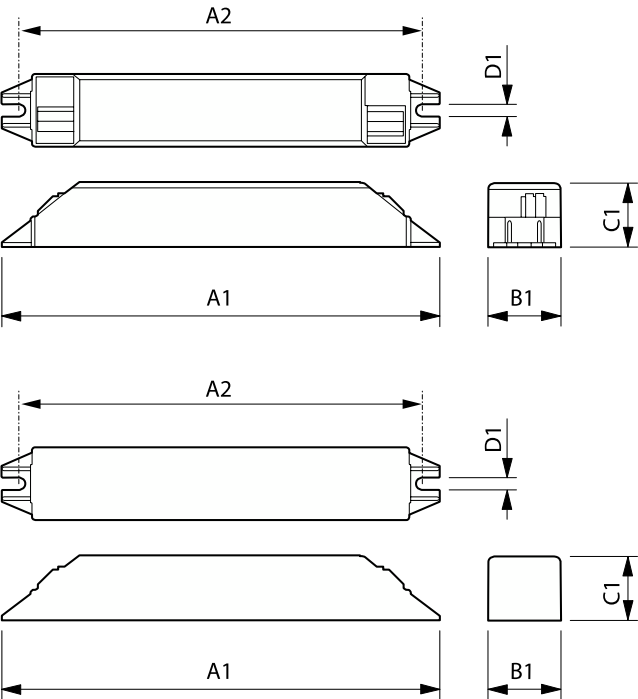


GPPR MTL-LH 0003



GPPR\_MTL-SH\_0002-Product photo

Dimensional drawing

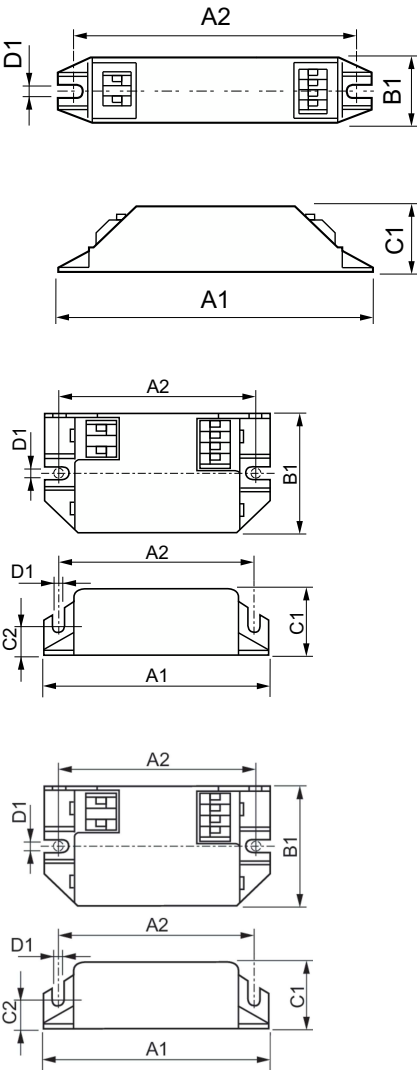


Product	A1	A2	B1	C1	D1
HF-M BLUE 121 LH TL5 230-240V	187 mm	180 mm	22 mm	22 mm	4.4 mm
HF-M BLUE 124 LH TL/TL5/PL-L 230-240V	187 mm	180 mm	22 mm	22 mm	4.4 mm

Product	A1	A2	B1	C1	D1
HF-M BLUE 109 LH TL/PL-S 230-240V	144 mm	133 mm	22 mm	22 mm	4.2 mm
HF-M BLUE 114 LH TL/PL-S/PL-C 230-240V	144 mm	133 mm	22 mm	22 mm	4.2 mm

# HF-Matchbox Blue

## Dimensional drawing



Operating and Electrical	
Input Frequency	50 to 60 Hz
Input Voltage	230 to 240 V
Line Frequency	50 to 60 Hz

## Operating and Electrical

Order Code	Full Product Name	Number of Products on MCB (16A Type B) (Nom)
913700421366	HF-M BLUE 109 LH TL/PL-S 230-240V	159
913700421766	HF-M BLUE 114 LH TL/PL-S/PL-C 230-240V	101
913700418066	HF-M BLUE 124 LH TL/TL5/PL-L 230-240V	60

## Mechanical and Housing

Product
HF-M BLUE 109 LH TL/PL-S 230-240V
HF-M BLUE 114 LH TL/PL-S/PL-C 230-240V
HF-M BLUE 121 LH TL5 230-240V
HF-M BLUE 124 LH TL/TL5/PL-L 230-240V

Product
HF-M BLUE 124 SH TL/TL5/PL-L 230-240V

Product	A1	A2	B1	C1	D1
HF-M BLUE 124 SH TL/TL5/PL-L 230-240V	94 mm	84 mm	40 mm	22 mm	4.4 mm

Order Code	Full Product Name	Number of Products on MCB (16A Type B) (Nom)
913700418366	HF-M BLUE 121 LH TL5 230-240V	59
913700417966	HF-M BLUE 124 SH TL/TL5/PL-L 230-240V	60

HF-Matchbox Blue

Order Code	Full Product Name	Housing
913700421366	HF-M BLUE 109 LH TL/PL-S 230-240V	LH
913700421766	HF-M BLUE 114 LH TL/PL-S/PL-C 230-240V	LH
913700418066	HF-M BLUE 124 LH TL/TL5/PL-L 230-240V	LH

Order Code	Full Product Name	Housing
913700418366	HF-M BLUE 121 LH TL5 230-240V	LH
913700417966	HF-M BLUE 124 SH TL/TL5/PL-L 230-240V	SH

