

Robust design, compact form

HF-Matchbox Red

HF-Matchbox Red is an affordable, reliable, compact, lightweight and high-frequency ballast for use with system wattages below 25 W in combination with TL mini, TL-D, TL5 and TL5c, PL-T/C, and PL-L/S lamps. The HF-M Red range has a robust design, meets all relevant international safety and performance standards and has an energy efficiency index (CELMA EEI) of A2. The ballast is primarily designed for Indoor application. For outdoor application, the luminaire should be minimum Classland need to be sufficiently protected against water & dust. The installation should also be guard against any lightening surge or any other necessary electrical protection as deemed in such typical installation & application.

Benefits

- Can be operated with movement-detection control systems.
- Automatic restart (after voltage dip or lamp exchange) ensures easy operation and hassle-free re-lamping.
- Suitable for use in class I or class II luminaires

Features

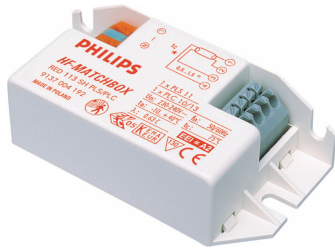
- Over 60,000 on/off switches on one lamp (depending on lamp/ballast combination)
- Suitable for emergency DC operation between 190 and 254 V
- Programmed, flicker-free, pre-heated start (<0.8 s) which allows the lamp to be switched on and off without reducing useful lamp life

Application

- Used with movement-detection control systems like Philips OccuPlus
- Mainly for indoor applications such as spotlights, downlights, light boxes, and emergency and security fixtures used largely in retail stores, office buildings, hotels, private homes and residential buildings
- Domestic applications such as outdoor garden lighting, garage areas, stairways

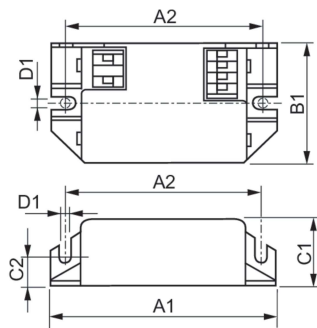
HF-Matchbox Red

Versions



GPPR_MTL-SHRD_0002-Product photo

Dimensional drawing



Product	D1	C1	C2	A1	A2	B1
HF-M RED 114 SH	4.2 mm	22.0	10.0	80.0	70.0	40.0
TL/TL5/PL-C/S 230-240V		mm	mm	mm	mm	mm
HF-M RED 124 SH	4.4 mm	22.0	10.0	94.0	70.0	40.0
TL/TL5/PL-L 230-240V		mm	mm	mm	mm	mm

Operating and Electrical

Input Frequency	50 to 60 Hz
Input Voltage	230 to 240 V
Line Frequency	50 to 60 Hz

Mechanical and Housing

Housing	SH
---------	----

Operating and Electrical

Order Code	Full Product Name	Number of Products on MCB (16A Type B) (Nom)
913700420666	HF-M RED 124 SH TL/TL5/PL-L 230-240V	48

Order Code	Full Product Name	Number of Products on MCB (16A Type B) (Nom)
913700423266	HF-M RED 114 SH TL/TL5/PL-C/S 230-240V	101

