

# Robust design, compact form

## HF-Matchbox Red

HF-Matchbox Red is an affordable, reliable, compact, lightweight and high-frequency ballast for use with system wattages below 25 W in combination with TL mini, TL-D, TL5 and TL5c, PL-T/C, and PL-L/S lamps. The HF-M Red range has a robust design, meets all relevant international safety and performance standards and has an energy efficiency index (CELMA EEI ) of A2.

### Benefits

- Can be operated with movement-detection control systems.
- Automatic restart (after voltage dip or lamp exchange) ensures easy operation and hassle-free re-lamping.
- Suitable for use in class I or class II luminaires

### Features

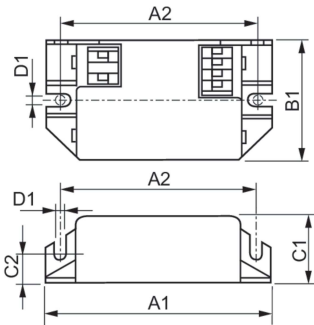
- Over 60,000 on/off switches on one lamp (depending on lamp/ballast combination)
- Suitable for emergency DC operation between 190 and 254 V
- Programmed, flicker-free, pre-heated start (<0.8 s) which allows the lamp to be switched on and off without reducing useful lamp life

### Application

- Used with movement-detection control systems like Philips OccuPlus
- Mainly for indoor applications such as spotlights, downlights, light boxes, and emergency and security fixtures used largely in retail stores, office buildings, hotels, private homes and residential buildings
- Domestic applications such as outdoor garden lighting, garage areas, stairways

HF-Matchbox Red

Dimensional drawing



Product	D1	C1	C2	A1	A2	B1
HF-M RED 109 SH TL/PL-S 230-240V	4.4 mm	22.0 mm	10.0 mm	80.0 mm	70.0 mm	40.0 mm
HF-M RED 114 SH TL/TL5/PL-C/S 230-240V	4.2 mm	22.0 mm	10.0 mm	80.0 mm	70.0 mm	40.0 mm
HF-M RED 118 SH PL-C/PL-T 230-240V	4.4 mm	22.0 mm	10.0 mm	80.0 mm	70.0 mm	40.0 mm
HF-M RED 124 SH TL/TL5/PL-L 230-240V	4.4 mm	22.0 mm	10.0 mm	94.0 mm	70.0 mm	40.0 mm

Operating and Electrical	
Input frequency	50 to 60 Hz
Input Voltage	230 to 240 V
Line Frequency	50 to 60 Hz
Mechanical and Housing	
Housing	SH

Operating and Electrical

Order Code	Full Product Name	Number of products on MCB (16 A type B) (nom.)
91040030	HF-M RED 124 SH TL/TL5/PL-L 230-240V	48
93142930	HF-M RED 109 SH TL/PL-S 230-240V	159

Order Code	Full Product Name	Number of products on MCB (16 A type B) (nom.)
93140530	HF-M RED 114 SH TL/TL5 230-240V	101
92802330	HF-M RED 118 SH PL-C/PL-T 230-240V	73

