

Robust design, compact form

HF-Matchbox Red

HF-Matchbox Red is an affordable, reliable, compact, lightweight and high-frequency ballast for use with system wattages below 25 W in combination with TL mini, TL-D, TL5 and TL5c, PL-T/C, and PL-L/S lamps. The HF-M Red range has a robust design, meets all relevant international safety and performance standards and has an energy efficiency index (CELMA EEI) of A2.

Benefits

- Can be operated with movement-detection control systems.
- Automatic restart (after voltage dip or lamp exchange) ensures easy operation and hassle-free re-lamping.
- Suitable for use in class I or class II luminaires

Features

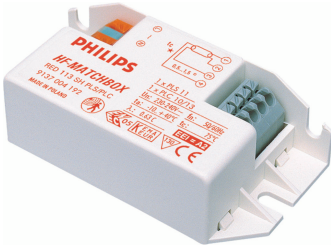
- Over 60,000 on/off switches on one lamp (depending on lamp/ballast combination)
- Suitable for emergency DC operation between 190 and 254 V
- Programmed, flicker-free, pre-heated start (<0.8 s) which allows the lamp to be switched on and off without reducing useful lamp life

Application

- Used with movement-detection control systems like Philips OccuPlus
- Mainly for indoor applications such as spotlights, downlights, light boxes, and emergency and security fixtures used largely in retail stores, office buildings, hotels, private homes and residential buildings
- Domestic applications such as outdoor garden lighting, garage areas, stairways

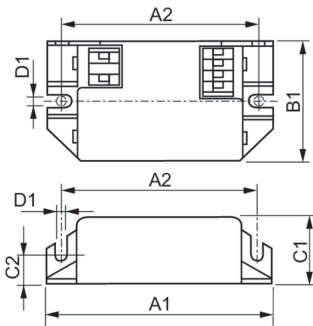
HF-Matchbox Red

Versions



GPPR_MTL-SHRD_0002-Product photo

Dimensional drawing



Product	D1	C1	C2	A1	A2	B1
HF-M RED 109 SH TL/PL-S 230-240V	4.4 mm	22.0 mm	10.0 mm	80.0 mm	70.0 mm	40.0 mm

