

# An energy-efficient solution

## HF-Performer II for PL-T/C/R/L/TL5C lamps

HF-Performer EII PL-T/C/R/T5c is a sustainable, slim and high-frequency electronic ballast for a wide range of CFL- ni applications. It is ideal for applications where high energy efficiency is required. The HF-Performer EII range has a robust design, meets all relevant international safety and performance standards and is energy-efficient (CELMA EEI A2). The ballast is primarily designed for Indoor application. For outdoor application, the luminaire should be minimum Classland need to be sufficiently protected against water & dust. The installation should also be guard against any lightening surge or any other necessary electrical protection as deemed in such typical installation & application.

### Benefits

- Robust design that meets all relevant international safety and performance standards and ensures good energy efficiency
- Automatic restart (after voltage dip or lamp exchange) ensures easy operation and hassle-free re-lamping
- Suitable for DC emergency operation, 186 to 275 V (at -10 oC) and in line with IEC/EN 60598-2-22 luminaire norms

### Features

- 50,000-hour lifetime at maximum case temperature, combined with over 60,000 on/off switches on one lamp
- Programmed, flicker-free, pre-heated start (< 1.5 s) which allows the lamp to be switched on and off without reducing useful lamp life
- Active power factor correction to ensure constant light, irrespective of mains-voltage fluctuations
- The unit is protected against excessive mains voltage and incorrect connections.

# HF-Performer II for PL-T/C/R/L/TL5C lamps

## Application

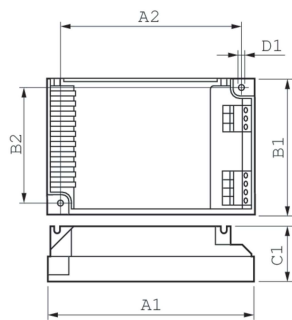
- Ideal for commercial indoor lighting applications where it is necessary to reduce the wattage per square meter or operating costs
- Used with movement-detection control systems like Philips OccuPlus
- Mainly for indoor applications such as spotlights, downlights and recessed fixtures used largely in retail stores, office buildings, supermarkets, hotels, convenience stores
- Industrial premises with long operating hours

## Versions



GPPR PPLTCL5 PHL 0001

## Dimensional drawing



| Product                | D1     | C1   | A1    | A2   | B1   | B2   |
|------------------------|--------|------|-------|------|------|------|
| HF-P 1 22-42 PL-T/C/L/ | 4.5 mm | 30.0 | 103.0 | 93.5 | 67.0 | 57.5 |
| TL5C EII 220-240V      |        | mm   | mm    | mm   | mm   | mm   |
| HF-P 2 22-42 PL-T/C/L/ | 4.5 mm | 30.0 | 103.0 | 93.5 | 67.0 | 57.5 |
| TL5C EII 220-240V      |        | mm   | mm    | mm   | mm   | mm   |



HF-Performer II for PL-T/C/R/L/TL5C lamps

| Operating and Electrical |              |
|--------------------------|--------------|
| Input Frequency          | 50 to 60 Hz  |
| Input Voltage            | 220 to 240 V |
| Line Frequency           | 50 to 60 Hz  |
| Approval and Application |              |
| Energy Efficiency Index  | A2           |

Operating and Electrical

| Order Code   | Full Product Name                       | Number of Products on<br>MCB (16A Type B) (Nom) |
|--------------|---|---|
| 913700630766 | HF-P 1 22-42 PL-T/C/L/TL5C EII 220-240V | 28  |

| Order Code   | Full Product Name                       | Number of Products on<br>MCB (16A Type B) (Nom) |
|--------------|---|---|
| 913700630866 | HF-P 2 22-42 PL-T/C/L/TL5C EII 220-240V | 12  |

