

An energy-efficient solution

HF-Performer II for PL-T/C/R/L/TL5C lamps

HF-Performer EII PL-T/C/R/T5c is a sustainable, slim and high-frequency electronic ballast for a wide range of CFL- ni applications. It is ideal for applications where high energy efficiency is required. The HF-Performer EII range has a robust design, meets all relevant international safety and performance standards and is energy-efficient (CELMA EEI A2). The ballast is primarily designed for indoor use. For outdoor use, the luminaire should be minimum Classland be sufficiently protected against water and dust. The installation should also be protected against lightning surges or any other electrical protection deemed necessary in this type of installation and application.

Benefits

- Robust design that meets all relevant international safety and performance standards and ensures good energy efficiency
- Automatic restart (after voltage dip or lamp exchange) ensures easy operation and hassle-free re-lamping
- Suitable for DC emergency operation, 186 to 275 V (at -10 oC) and in line with IEC/EN 60598-2-22 luminaire norms

Features

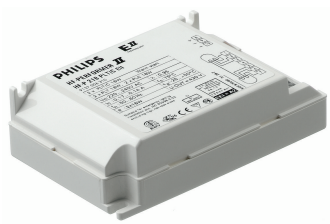
- 50,000-hour lifetime at maximum case temperature, combined with over 60,000 on/off switches on one lamp
- Programmed, flicker-free, pre-heated start (< 1.5 s) which allows the lamp to be switched on and off without reducing useful lamp life
- Active power factor correction to ensure constant light, irrespective of mains-voltage fluctuations
- The unit is protected against excessive mains voltage and incorrect connections.

HF-Performer II for PL-T/C/R/L/TL5C lamps

Application

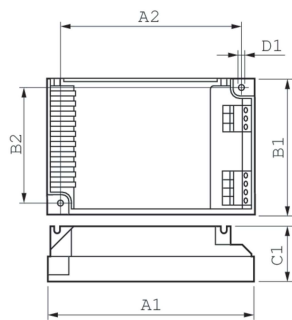
- Ideal for commercial indoor lighting applications where it is necessary to reduce the wattage per square meter or operating costs
- Used with movement-detection control systems like Philips OccuPlus
- Mainly for indoor applications such as spotlights, downlights and recessed fixtures used largely in retail stores, office buildings, supermarkets, hotels, convenience stores
- Industrial premises with long operating hours

Versions



GPPR PPLTCL5 PHL 0001

Dimensional drawing



Product	D1	C1	A1	A2	B1	B2
HF-P 1 22-42 PL-T/C/L/ TL5C EII 220-240V	4.5 mm	30.0 mm	103.0 mm	93.5 mm	67.0 mm	57.5 mm
HF-P 2 22-42 PL-T/C/L/ TL5C EII 220-240V	4.5 mm	30.0 mm	103.0 mm	93.5 mm	67.0 mm	57.5 mm



HF-Performer II for PL-T/C/R/L/TL5C lamps

Operating and Electrical	
Input frequency	50 to 60 Hz
Input Voltage	220 to 240 V
Line Frequency	50 to 60 Hz
Approval and Application	
Energy efficiency index	A2

Operating and Electrical

Order Code	Full Product Name	Number of products on MCB (16 A type B) (nom.)
913700630766	HF-P 1 22-42 PL-T/C/L/TL5C EII 220-240V	28

Order Code	Full Product Name	Number of products on MCB (16 A type B) (nom.)
913700630866	HF-P 2 22-42 PL-T/C/L/TL5C EII 220-240V	12

