



Product Description

HF-Performer Intelligent for TL5 HE/HO lamps

Intelligent, flat, slim, lightweight high-frequency electronic ballast for TL5 fluorescent lamps

Benefits

- Maximum reliability in system operation, and flexibility for designers, operators and facility managers in terms of stock-keeping management
- Multi-power technology for precise operation of multiple lamp types of various wattages
- Optimized for high maintenance efficiency and reliability: 5-year warranty

Features

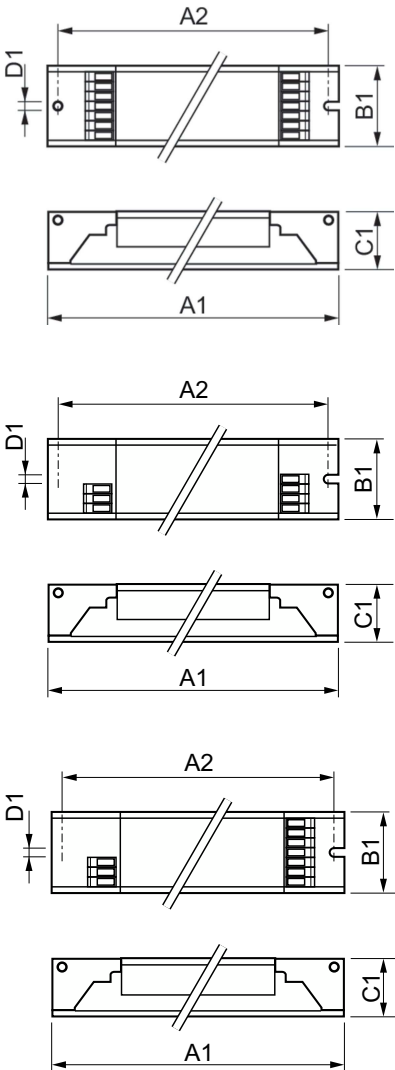
- Highest CELMA Energy Efficiency Index A2 BAT
- Complies with CE, ENEC, EL, VDE-EMC, CCC marks of conformity
- Average nominal service lifetime over 100,000 hours (at Ta 50 °C) with a failure rate $\leq 0.1\%$ per 1,000 hours
- Optimized lamp preheating for a minimum of 50,000 On/Off switch operations without lamp replacement

Application

- Ideal for applications with high switching frequency, typical application areas include:
- Use with infrared remote control systems (e.g. movement detection)
- Department stores, shops, supermarkets, hotels, hospitals, office buildings, industrial premises
- Airports, railway stations
- Outdoor lighting; in general suitable for Class I applications
- Suitable for installations with emergency back-up, according to VDE 0108-100 / EN 60598-2-22 with re-ignition < 0.5 s

HF-Performer Intelligent for TL5 HE/HO lamps

Dimensional drawing



| Product | D1 | C1 | A1 | A2 | B1 |
|---------------------------------------|--------|-------|--------|--------|-------|
| HF-Pi 3/4 14/24 TL5/PL-L EII 220-240V | 4.2 mm | 22 mm | 360 mm | 350 mm | 30 mm |

| Product | D1 | C1 | A1 | A2 | B1 |
|--------------------------------------|--------|-------|--------|--------|-------|
| HF-Pi 1 28/35/49/54 TL5 EII 220-240V | 4.2 mm | 22 mm | 360 mm | 350 mm | 30 mm |
| HF-Pi 1 28/35/49/80 TL5 EII | 4.2 mm | 22 mm | 360 mm | 350 mm | 30 mm |

| Product | D1 | C1 | A1 | A2 | B1 |
|--------------------------------------|--------|-------|--------|--------|-------|
| HF-Pi 2 28/35/49/54 TL5 EII 220-240V | 4.2 mm | 22 mm | 360 mm | 350 mm | 30 mm |
| HF-Pi 2 28/35/49/80 TL5 EII | 4.2 mm | 22 mm | 425 mm | 415 mm | 30 mm |

| Operating and Electrical | |
|--------------------------|--------------|
| Input Frequency | 50 to 60 Hz |
| Input Voltage | 220 to 240 V |
| Line Frequency | 50 to 60 Hz |
| Approval and Application | |
| Energy Efficiency Index | A2 BAT |

Operating and Electrical

| Order Code | Full Product Name | Number of Products on MCB (16A Type B) (Nom) |
|------------|--------------------------------------|--|
| 91496530 | HF-Pi 1 28/35/49/54 TL5 220-240V | 18 |
| 91502330 | HF-Pi 2 28/35/49/54 TL5 220-240V | 12 |
| 86249200 | HF-Pi 1 28/35/49/80 TL5 EII 220-240V | 12 |

| Order Code | Full Product Name | Number of Products on MCB (16A Type B) (Nom) |
|------------|---------------------------------------|--|
| 86250800 | HF-Pi 2 28/35/49/80 TL5 EII 220-240V | 8 |
| 88775400 | HF-Pi 3/4 14/24 TL5/PL-L EII 220-240V | 12 |

HF-Performer Intelligent for TL5 HE/HO lamps

Mechanical and Housing

| Order Code | Full Product Name | Housing |
|------------|--------------------------------------|------------|
| 91496530 | HF-Pi 1 28/35/49/54 TL5 220-240V | L360x30x22 |
| 91502330 | HF-Pi 2 28/35/49/54 TL5 220-240V | L360x30x22 |
| 86249200 | HF-Pi 1 28/35/49/80 TL5 EII 220-240V | L360x30x22 |

| Order Code | Full Product Name | Housing |
|------------|---------------------------------------|-------------|
| 86250800 | HF-Pi 2 28/35/49/80 TL5 EII 220-240V | L 425x30x22 |
| 88775400 | HF-Pi 3/4 14/24 TL5/PL-L EII 220-240V | L360x30x22 |

