



# Product Description

## Plusline Small

Mains-voltage linear lamp giving white halogen light

### Benefits

- Bright halogen light
- Long lifetime

### Features

- Clear tubular quartz bulb
- Reinforced filament supports for maximum safety and shock resistance resulting in longer lifetime
- Two arc-preventing fuses for greater safety
- Excellent colour rendering
- Constant light output during life

### Application

- Typically used in shop lighting applications
- Indoor: homes, offices, shops and museums
- Outdoor: billboards, car parks, security lighting and construction sites

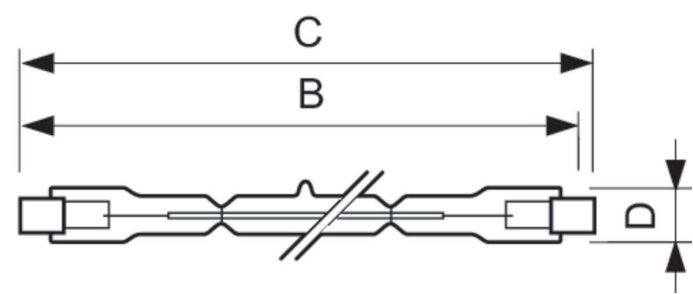
# Plusline Small

## Versions



8711500498311 - RFT

## Dimensional drawing



Product	D (max)	B (max)	B	B (min)	C (max)
300 W R7s cap Clear Halogen linear lamp	12 mm	115.8 mm	114.2 mm	112.6 mm	117.6 mm

