



# Digital ignitors with long lifetime

## Electronic semi-parallel ignitor for HID lamp circuits

HID ignitors for semi-parallel systems

### Benefits

- Will only work with semi-parallel ballasts
- Will only work with semi-parallel ballasts
- Digital versions ensure longer lifetime than series ignitors
- Digital versions ensure longer lifetime than series ignitors
- Silent operation
- Silent operation

### Features

- Semi-parallel ignitor will only work in semi-parallel circuits and must be matched with relevant ballast
- Semi-parallel ignitor will only work in semi-parallel circuits and must be matched with relevant ballast
- Ignitors equipped with screw terminal blocks as standard
- Ignitors equipped with screw terminal blocks as standard
- Lightweight and compact products
- Lightweight and compact products
- Current flows through ignitor only at lamp start-up
- Current flows through ignitor only at lamp start-up

### Application

- Outdoor lighting
- Outdoor lighting

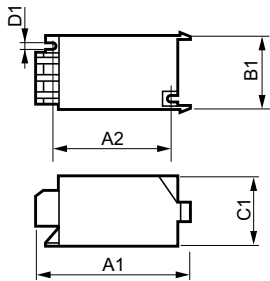
# Electronic semi-parallel ignitor for HID lamp circuits

## Versions



GPPIR IGSON

## Dimensional drawing



Product	C1	A1	A2	B1
SN 58	38.5 mm	85.5 mm	65.0 mm	41.5 mm

