



# A nod to the past

## Ourcelles Bracket

The Ourcelles brackets is a nod to past times when luminaires were part of the street's embellishments in their own right. It adds character, singularity and charm to a landscape.

### Benefits

- Compatible with our Accante and Aloa ranges of steel or aluminium conical poles

### Features

- Available in single arm, double arm, pole-mounting and wall-mounting versions
- Length range: 450, 750 or 1000mm
- Luminaire fixing: suspended

### Application

- Parks and squares
- Villages, small city centers
- Residential areas

### Versions

Ourcelles Wall Pole bracket-  
JSB720 S450



Ourcelles DA bracket-JSB720  
S1100

# Ourcelles Bracket

## Versions

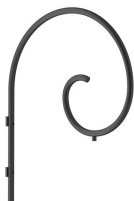
Ourcelles SA bracket-JSB720  
S450



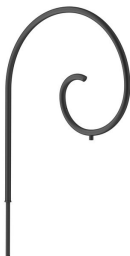
Ourcelles DA bracket-JSB720  
S450



Ourcelles Wall Pole bracket-  
JSB720 S1100



Ourcelles SA bracket-JSB720  
S1100



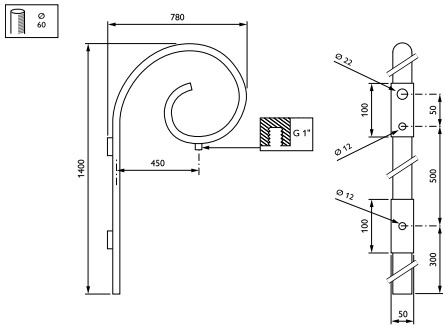
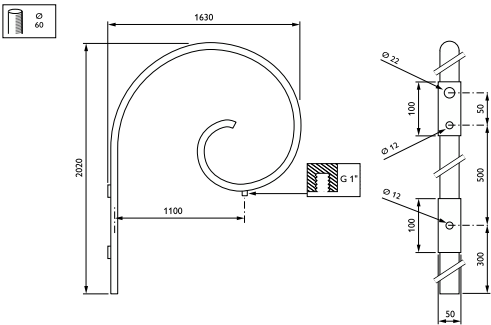
Ourcelles DA bracket-JSB720  
S750



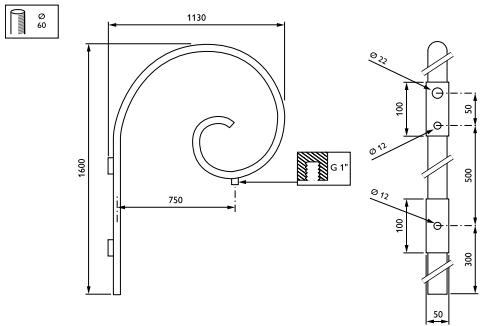
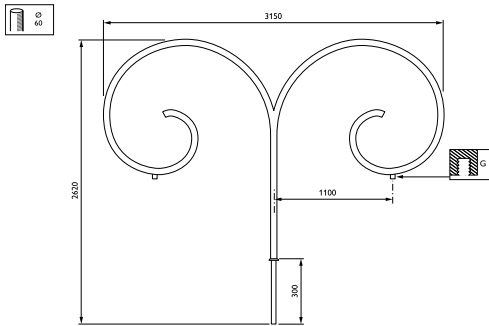
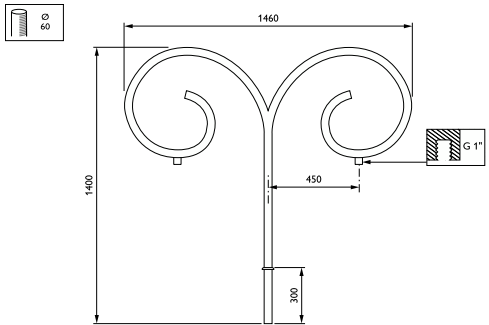
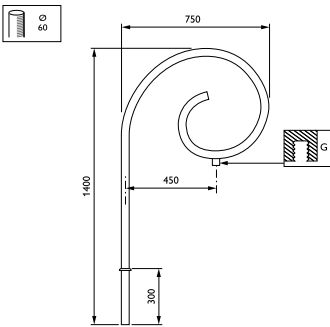
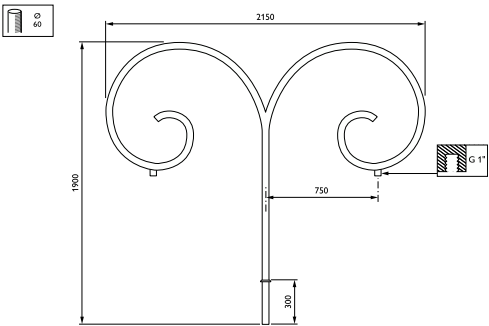
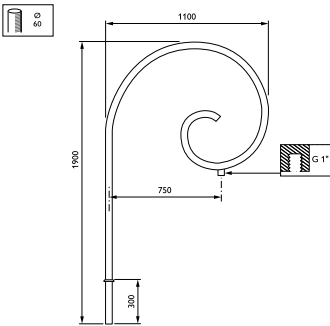
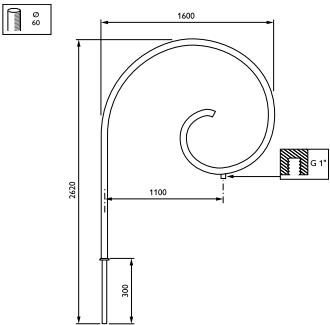
Ourcelles SA bracket-JSB720 S750



## Dimensional drawing



Dimensional drawing



## Ourcelles Bracket

