



The new generation of energy saving tube lighting

MASTER LEDtube EM/Mains T8

The Philips MASTER LEDtube integrates a LED light source into a traditional fluorescent form factor. Its unique design creates a perfectly uniform visual appearance which cannot be distinguished from traditional fluorescent. This product is the ideal solution for up lighting in general lighting applications.

Benefits

- Reduced operational cost thanks to lower energy consumption
- Reduced operational cost thanks to lower energy consumption
- Lower maintenance cost thanks to 2-3 times longer lifetime than normal fluorescent tubes
- Lower maintenance cost thanks to 2-3 times longer lifetime than normal fluorescent tubes
- Fastest and easiest way to upgrade existing luminaire to LED technology; 100%-safe installation process
- Fastest and easiest way to upgrade existing luminaire to LED technology; 100%-safe installation process

MASTER LEDtube EM/Mains T8

Features

- Only 50% energy consumption compared to fluorescent tubes
- Only 50% energy consumption compared to fluorescent tubes
- Extra-long life of 40,000 hours
- Extra-long life of 40,000 hours
- Retrofit to existing T8 lamps on EM ballast installations
- Retrofit to existing T8 lamps on EM or HF electronic gear
- Full safety features and EM Protector safety device
- Full safety features and EM Protector safety device
- No mercury
- No mercury

Application

- Parking lots / covered car parks
- Car parks
- Warehouses / coldrooms / signage
- Warehouses
- Transport and distribution areas
- Transport and distribution areas
- Food & Museums
- Front & back of house retail & hospitality

Warnings and Safety

- -
- -

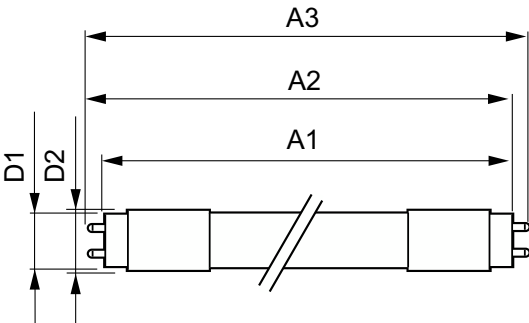
Versions

 LEDtubes, 600mm 8.5W, 900mm 10.5W, 1200mm 12W, 1200mm 15W

 SPPR_MLED_APR_0014-Product photo

 LEDtube 1200mm HO T8

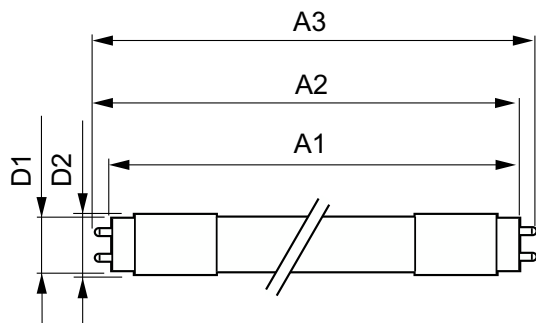
Dimensional drawing



Product	D1	D2	A1	A2	A3
MAS LEDtube 1500mm UO 21.7W 840 T8	25.8 mm	28 mm	1,498.8 mm	1,505.9 mm	1,513 mm
MAS LEDtube 600mm HO 8W840 T8	25.78 mm	28 mm	588.5 mm	595.5 mm	602.5 mm

MASTER LEDtube EM/Mains T8

Dimensional drawing



Product	D1	D2	A1	A2	A3
MAS LEDtube 1500mm HO 18.2W 840 T8	25.8 mm	28 mm	1,498.8 mm	1,505.9 mm	1,513 mm
MAS LEDtube 1500mm HO 18.2W 865 T8	25.8 mm	28 mm	1,498.8 mm	1,505.9 mm	1,513 mm

General Information

Cap-Base	G13 ROT
Switching Cycle	200,000
Nominal lifetime	75,000 hour(s)

Light Technical

Beam Angle (Nom)	160 degree(s)
LLMF At End Of Nominal Lifetime (Nom)	70 %

Operating and Electrical

Input Frequency	50 to 60 Hz
Line Frequency	50 to 60 Hz
Starting Time (Nom)	0.5 s

Controls and Dimming

Dimmable	No
----------	----

Mechanical and Housing

Bulb Finish	Frosted
Bulb Shape	T8

Approval and Application

Ambient temperature range	-20 °C to 45 °C
---------------------------	-----------------

Light Technical

Order Code	Full Product Name	Correlated Color Temperature (Nom)	Color rendering index (CRI)	Color Code	Luminous Flux
929001307102	MAS LEDtube 600mm HO 8W840 T8	4000 K	83	840	1,050 lm
929002998602	MAS LEDtube 1500mm UO 21.7W 840 T8	4000 K	80	840	3,700 lm
929001923002	MAS LEDtube 1500mm HO 18.2W 840 T8	4000 K	80	840	3,100 lm
929001923102	MAS LEDtube 1500mm HO 18.2W 865 T8	6500 K	80	865	3,100 lm

Operating and Electrical

Order Code	Full Product Name	Power Consumption
929001307102	MAS LEDtube 600mm HO 8W840 T8	8 W
929002998602	MAS LEDtube 1500mm UO 21.7W 840 T8	21.7 W

Order Code	Full Product Name	Power Consumption
929001923002	MAS LEDtube 1500mm HO 18.2W 840 T8	18.2 W
929001923102	MAS LEDtube 1500mm HO 18.2W 865 T8	18.2 W

Temperature

Order Code	Full Product Name	T-Case Maximum (Nom)
929001307102	MAS LEDtube 600mm HO 8W840 T8	50 °C
929002998602	MAS LEDtube 1500mm UO 21.7W 840 T8	60 °C

Order Code	Full Product Name	T-Case Maximum (Nom)
929001923002	MAS LEDtube 1500mm HO 18.2W 840 T8	55 °C
929001923102	MAS LEDtube 1500mm HO 18.2W 865 T8	55 °C

Approval and Application

MASTER LEDtube EM/Mains T8

Order Code	Full Product Name	Energy Consumption kWh/
		1000 h
929001307102	MAS LEDtube 600mm HO 8W840 T8	8 kWh
929002998602	MAS LEDtube 1500mm UO 21.7W 840 T8	22 kWh
929001923002	MAS LEDtube 1500mm HO 18.2W 840 T8	19 kWh
929001923102	MAS LEDtube 1500mm HO 18.2W 865 T8	19 kWh

