

The new generation of energy saving tube lighting

MASTER LEDtube InstantFit HF T8

The Philips MASTER LEDtube integrates a LED light source into a traditional fluorescent form factor. Its unique design creates a perfectly uniform visual appearance which cannot be distinguished from traditional fluorescent. This product is the ideal solution for up lighting in general lighting applications.

Benefits

- Reduced operational cost thanks to lower energy consumption
- Lower maintenance cost thanks to 2-3 times longer lifetime than normal fluorescent tubes
- Fastest and easiest way to upgrade existing luminaire to LED technology, with a 100%- safe installation process

Features

- Only 50% energy consumption compared to fluorescent tubes
- Extra-long life of 50,000 hours
- Retrofit to existing T8 lamps on EM ballast installations
- Full safety features and EM Protector safety device
- No mercury

Application

- The ideal solution for very demanding applications with the highest lumen output requirements while saving on energy bills: office, school, retail & industry, healthcare applications

Warnings and Safety

- NOTES: The overall energy efficiency and light distribution of any installation that uses these lamps are determined by the design of the installation.

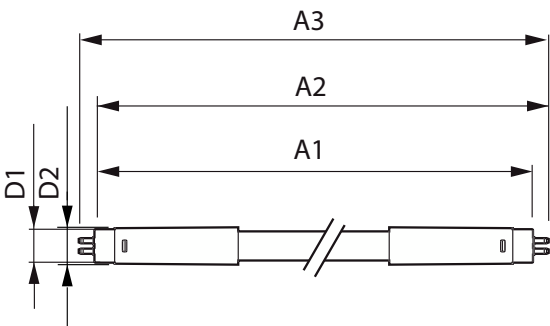
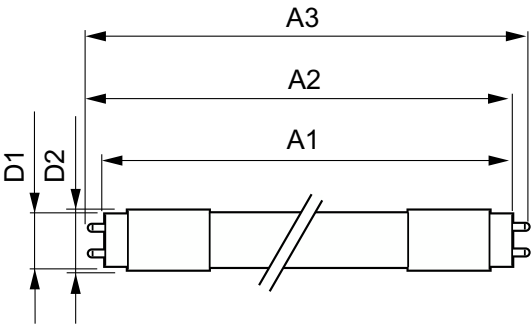
MASTER LEDtube InstantFit HF T8

Versions



TLED 230V 10.5W-36W 160D T8ND 8W G13

Dimensional drawing



Product	D1	D2	A1	A2	A3
MAS LEDtube HF 1200mm HO 14W840 T8	25.8 mm	28 mm	1,198.2 mm	1,205.3 mm	1,212.4 mm

Product	D1	D2	A1	A2	A3
MAS LEDtube HF 600mm HO 8W840 T8	25.8 mm	28 mm	588.6 mm	595.7 mm	602.8 mm

MASTER LEDtube InstantFit HF T8

General Information	
Cap-Base	G13 ROT
Switching Cycle	50,000
Nominal lifetime	75,000 hour(s)
Light Technical	
Beam Angle (Nom)	160 degree(s)
Correlated Color Temperature (Nom)	4000 K
Color rendering index (CRI)	80
Color Code	840
LLMF At End Of Nominal Lifetime (Nom)	70 %
Operating and Electrical	
Starting Time (Nom)	0.5 s
Temperature	
T-Case Maximum (Nom)	55 °C
Mechanical and Housing	
Bulb Finish	Frosted
Bulb Shape	T8
Approval and Application	
Ambient temperature range	-20 °C to 45 °C

Light Technical

Order Code	Full Product Name	Luminous Flux
929003553502	MAS LEDtube HF 1200mm HO 14W840 T8	2,100 lm
929001393232	MAS LEDtube HF 600mm HO 8W840 T8	1,050 lm

Operating and Electrical

Full Product				Power
Order Code	Name	Input Frequency	Line Frequency	Consumption
929003553502	MAS LEDtube HF 1200mm HO 14W840 T8	20000-75000 Hz	20000-75000 Hz	14 W

Full Product				Power
Order Code	Name	Input Frequency	Line Frequency	Consumption
929001393232	MAS LEDtube HF 600mm HO 8W840 T8	20000-120000 Hz	20000-120000 Hz	8 W

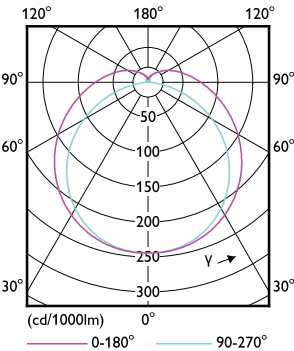
Controls and Dimming

Order Code	Full Product Name	Dimmable
929003553502	MAS LEDtube HF 1200mm HO 14W840 T8	Yes - Check ballast compatibility

Order Code	Full Product Name	Dimmable
929001393232	MAS LEDtube HF 600mm HO 8W840 T8	No

Approval and Application

Energy Consumption kWh/1000 h		
Order Code	Full Product Name	
929003553502	MAS LEDtube HF 1200mm HO 14W840 T8	14 kWh
929001393232	MAS LEDtube HF 600mm HO 8W840 T8	8 kWh



MASTER LEDtube InstantFit HF T8

