



CoreLine Recessed – the clear choice for LED

CoreLine recessed

Whether for a new building or renovation of an existing space, customers want lighting solutions that provide quality of light and substantial energy and maintenance savings. The new CoreLine Recessed range of LED products can be used to replace functional luminaires in general lighting applications. The process of selecting, installing and maintaining is so easy – it's a simple switch. In addition, Coreline Recessed also provides the option of advanced connectivity and is ready to be connected to IoT based software applications such as Interact Pro.

Benefits

- Enables a simple switch from basic conventional fluorescent luminaires to LED luminaires
- Energy saving of over 45% compared to functional TL5 luminaires
- Slim design with a height of only 35 mm

Features

- Integrated LED technology
- Slim housing
- Surface-mounted version also available (also suitable for suspension)
- Integrated 3 hour emergency versions available
- Office compliant (UGR<19) flicker free and Non Office compliant versions available.

Application

- General lighting

Warnings and Safety

- The product is IPX0 and as such is not protected against water ingress, so we strongly recommend that the environment in which the luminaire is to be installed is suitably checked
- If the above advice is not taken and the luminaires are subject to water ingress, Philips/Signify cannot guarantee safe failure and product warranty will become void

Versions



RC136B 31S_37S_43S/840 PSD
W60L60 OC_SPP

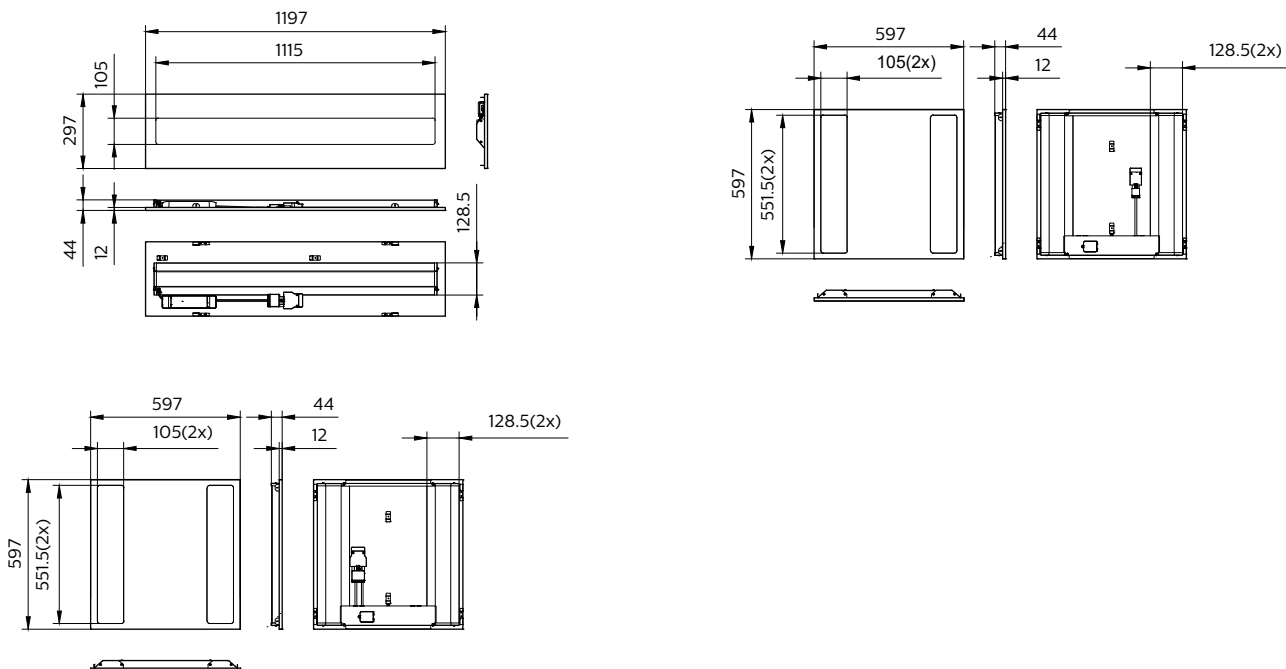


CoreLine Recessed



RC136B 31S_37S_43S/840 PSU
W60L60 NOC_SPP

Dimensional drawing

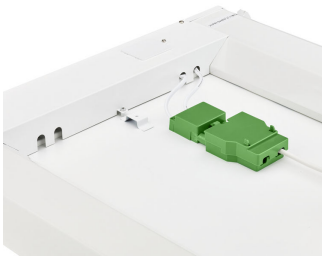


Product details

CoreLine Recessed Backside



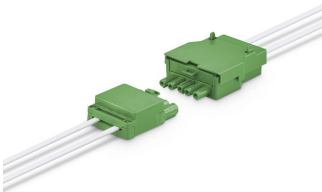
CoreLine Recessed Backside with connector



CoreLine Recessed Backside



CoreLine Recessed connector PSD (dali)



CoreLine Recessed in ceiling



CoreLine_Recessed_RC136B_60x60



CoreLine Recessed

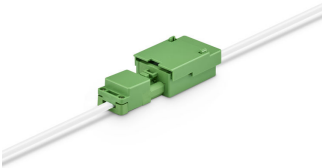


CoreLine Recessed connector PSU (On/Off))



CoreLine recessed

Product details



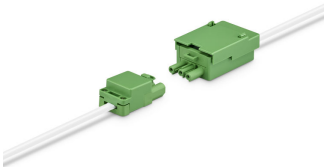
CoreLine Recessed connector PSU
(On/Off))



CoreLine Recessed Edge



CoreLine Recessed Edge



CoreLine Recessed connector PSU
(On/Off))



CoreLine Recessed Safety Cable



CoreLine Recessed in ceiling

CoreLine recessed

General Information	
Driver included	Yes
Light source replaceable	No
Number of gear units	Unit
Service Tag	Yes
Light Technical	
Colour rendering index (CRI)	>80
Operating and Electrical	
Input Voltage	220-240 V
Line Frequency	50 or 60 Hz
Suitable for random switching	Yes
Mechanical and Housing	
Housing Colour	White
Mech. impact protection code	IK03
Ingress protection code	IP20/44
Approval and Application	
CE mark	Yes
ENEC mark	ENEC mark
Flammability mark	For mounting on normally flammable surfaces
Glow-wire test	Temperature 650 °C, duration 30 s
Flickering value (PstLM)	1
Initial Performance (IEC Compliant)	
Luminous flux tolerance	+/-10%

Light Technical (1/2)

Order Code	Full Product Name	All-in Type	Correlated Colour Temperature	Luminous efficacy (rated)	Luminous
			(Nom)	(nom.)	Flux
96398600	RC136B 60S/840 PSU W60L60 OC	-	4000 K	135 lm/W	6,000 lm
51504800	RC136B 40S/830 WIA W60L60 OC	-	3000 K	135 lm/W	4,000 lm
51505500	RC136B 43S/840 WIA W60L60 OC	-	4000 K	140 lm/W	4,300 lm
51221400	RC136B 31S_37S_43S/840 PSD W60L60 OC	All-in, Multi Lumen	4000 K	140 lm/W	3,100 lm
97552400	RC136B 31S_37S_43S/840 PSD W30L120OCELB3	All-in, Multi Lumen	4000 K	126 lm/W	3,100 lm
53238000	RC136B 43S/840 WIA W30L120 OC	-	4000 K	140 lm/W	4,300 lm
51217700	RC136B 31S_37S_43S/840 PSU W60L60 NOC	All-in, Multi Lumen	4000 K	140 lm/W	3,100 lm

Light Technical (2/2)

Order Code	Full Product Name	Optic type	Order Code	Full Product Name	Optic type
96398600	RC136B 60S/840 PSU W60L60 OC	Beam angle 84°	97552400	RC136B 31S_37S_43S/840 PSD W30L120OCELB3	Wide beam
51504800	RC136B 40S/830 WIA W60L60 OC	Beam angle 84°	53238000	RC136B 43S/840 WIA W30L120 OC	Beam angle 84°
51505500	RC136B 43S/840 WIA W60L60 OC	Beam angle 84°	51217700	RC136B 31S_37S_43S/840 PSU W60L60 NOC	Beam angle 100°
51221400	RC136B 31S_37S_43S/840 PSD W60L60 OC	Beam angle 84°			

Operating and Electrical

Order Code	Full Product Name	Protection class	Power	Order Code	Full Product Name	Protection class	Power
		IEC	Consumption			IEC	Consumption
96398600	RC136B 60S/840 PSU W60L60 OC	Safety class II	44 W	97552400	RC136B 31S_37S_43S/840 PSD W30L120OCELB3	Safety class II	34 W
51504800	RC136B 40S/830 WIA W60L60 OC	Safety class II	31 W	53238000	RC136B 43S/840 WIA W30L120 OC	Safety class II	31 W
51505500	RC136B 43S/840 WIA W60L60 OC	Safety class II	31 W	51217700	RC136B 31S_37S_43S/840 PSU W60L60 NOC	Safety class I	31 W
51221400	RC136B 31S_37S_43S/840 PSD W60L60 OC	Safety class II	31 W				

Controls and Dimming

Order Code	Full Product Name	Maximum dim	
		Dimmable	level
96398600	RC136B 60S/840 PSU W60L60 OC	No	-
51504800	RC136B 40S/830 WIA W60L60 OC	Yes	1%
51505500	RC136B 43S/840 WIA W60L60 OC	Yes	1%
51221400	RC136B 31S_37S_43S/840 PSD W60L60 OC	Yes	3%

Order Code	Full Product Name	Maximum dim	
		Dimmable	level
97552400	RC136B 31S_37S_43S/840 PSD W30L120OCELB3	Yes	3%
53238000	RC136B 43S/840 WIA W30L120 OC	Yes	1%
51217700	RC136B 31S_37S_43S/840 PSU W60L60 NOC	No	-

Emergency Operation

Order Code	Full Product Name	Central Emergency	Emergency lighting	Rated duration of the emergency lighting (when fully charged)
96398600	RC136B 60S/840 PSU W60L60 OC	-	-	-
51504800	RC136B 40S/830 WIA W60L60 OC	-	-	-
51505500	RC136B 43S/840 WIA W60L60 OC	-	-	-
51221400	RC136B 31S_37S_43S/840 PSD W60L60 OC	-	-	-

Order Code	Full Product Name	Central Emergency	Emergency lighting	Rated duration of the emergency lighting (when fully charged)
97552400	RC136B 31S_37S_43S/840 PSD W30L120OCELB3	No	Emergency lighting 3-hours duration basic version	3 h
53238000	RC136B 43S/840 WIA W30L120 OC	-	-	-
51217700	RC136B 31S_37S_43S/840 PSU W60L60 NOC	-	-	-

Approval and Application

Order Code	Full Product Name	Ambient temperature range	Stroboscopic effect
96398600	RC136B 60S/840 PSU W60L60 OC	-10 to +35 °C	0.4
51504800	RC136B 40S/830 WIA W60L60 OC	-10 to +40 °C	0.4
51505500	RC136B 43S/840 WIA W60L60 OC	-10 to +40 °C	0.4
51221400	RC136B 31S_37S_43S/840 PSD W60L60 OC	-10 to +40 °C	1.6

Order Code	Full Product Name	Ambient temperature range	Stroboscopic effect
97552400	RC136B 31S_37S_43S/840 PSD W30L120OCELB3	0 to +25 °C	0.4
53238000	RC136B 43S/840 WIA W30L120 OC	-10 to +40 °C	0.4
51217700	RC136B 31S_37S_43S/840 PSU W60L60 NOC	-10 to +40 °C	1.6

Initial Performance (IEC Compliant)

Order Code	Full Product Name	Initial chromaticity
96398600	RC136B 60S/840 PSU W60L60 OC	(0.38, 0.38) SDCM ≤3
51504800	RC136B 40S/830 WIA W60L60 OC	(0.43, 0.40) SDCM ≤3
51505500	RC136B 43S/840 WIA W60L60 OC	(0.38, 0.38) SDCM ≤3
51221400	RC136B 31S_37S_43S/840 PSD W60L60 OC	(0.38, 0.38) SDCM ≤3

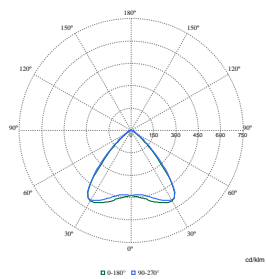
Order Code	Full Product Name	Initial chromaticity
97552400	RC136B 31S_37S_43S/840 PSD W30L120OCELB3	(0.38, 0.38) SDCM ≤3
53238000	RC136B 43S/840 WIA W30L120 OC	(0.38, 0.38) SDCM ≤3
51217700	RC136B 31S_37S_43S/840 PSU W60L60 NOC	(0.38, 0.38) SDCM ≤3

Product Data

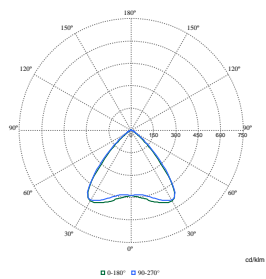
Order Code	Full Product Name	Product family code
96398600	RC136B 60S/840 PSU W60L60 OC	-
51504800	RC136B 40S/830 WIA W60L60 OC	-
51505500	RC136B 43S/840 WIA W60L60 OC	-
51221400	RC136B 31S_37S_43S/840 PSD W60L60 OC	-

Order Code	Full Product Name	Product family code
97552400	RC136B 31S_37S_43S/840 PSD W30L120OCELB3	RC136B
53238000	RC136B 43S/840 WIA W30L120 OC	-
51217700	RC136B 31S_37S_43S/840 PSU W60L60 NOC	-

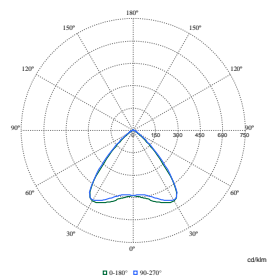
Polar Wide Diagrams



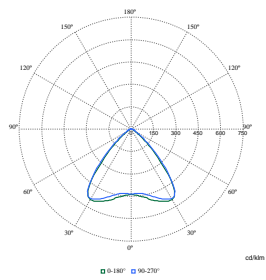
Polar Normal (separate) - RC136BI - 910505101245



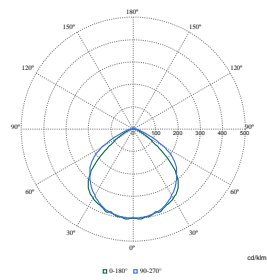
Polar Normal (separate) - null - 911401880781



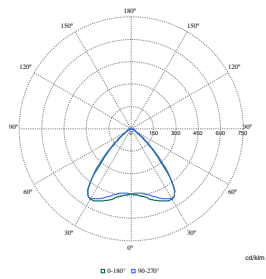
Polar Normal (separate) - null - 911401880825



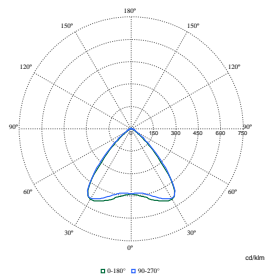
Polar Normal (separate) - null - 911401867382



Polar Normal (separate) - null - 911401880381



Polar Normal (separate) - null - 911401896681



Polar Normal (separate) - null - 911401896781

