



Philips CoreLine recessed: easy installation, excellent illumination.

CoreLine recessed

Philips CoreLine recessed delivers on the CoreLine promise of innovative, easy-to-use, high-quality luminaires. It's a high-quality recessed LED that's designed to replace existing recessed luminaires with T8 or T5 technology. This CoreLine family also features an innovative new choice of multiple lumen outputs in one single luminaire, called MultiLumen. Instant energy savings and a longer lifetime, make this is an environmentally-friendly and cost-saving solution. With a quick-connector or Wieland feature, CoreLine RC136B recessed luminaires are quick and easy to install. Also available within the range are Interact Ready luminaires with integrated wireless communications, which are fully compatible with Interact gateways, sensors and software.

Benefits

- MultiLumen: a choice of different lumen outputs in one single luminaire
- New connector offers quick and simple installation
- Energy savings and longer lifetime to reduce operating costs

Features

- MultiLumen: different lumen outputs ranging from 2800 lumen to 4300 lumen in one single luminaire
- Easy connector for faster installation: quick connector or Wieland connector
- Energy efficient and long lifetime: up to 140 lm/W and 50,000 hours @L80 lifetime
- Many flicker-free drivers available: On/off (PSU), dimming (Dali) and integrated wireless connectivity (Interact Ready)
- Office compliant versions (OC) & Non-office compliant versions (NOC)
- High lumen available: up to 6000 lm (OC)
- Optional versions available: Emergency Lighting (EL) & Wieland/Adels connectors (W)

Application

- Offices
- Healthcare
- Education

Warnings and Safety

- The product is IPX0 & as such is not protected against water ingress & as such we strongly recommend that The environment in which The luminaire is to be installed is suitably checked
- If the above advice is not taken and the luminaires are subject to water ingress, Philips / Signify cannot guarantee safe failure & product warranty will become void

Versions



RC136B 31S_37S_43S/840 PSU
W60L60 NOC W3_SPP



RC136B 31S_37S_43S/840 PSD
W30L120 OC _SPP



RC136B 31S_37S_43S/840 PSU
W60L60 OC _SPP



RC136B 28S_34S_40S/830 PSU
W60L60 NOC W3_SPP

Versions

RC136B 31S_37S_43S/840 PSD
W60L60 NOC W5_SPP



RC136B 28S_34S_40S/830 PSD
W60L60 OC _SPP



RC136B 31S_37S_43S/840 PSD
W60L60 OC _SPP



RC136B 28S_34S_40S/830 PSD
W30L120 OC _SPP



RC136B 31S_37S_43S/840 PSD
W60L60 OC W5_SPP



RC136B 28S_34S_40S/830 PSD
W60L60 OC W5_SPP



RC136B 28S_34S_40S/830 PSU
W60L60 NOC _SPP



RC136B 31S_37S_43S/840 PSU
W60L60 NOC _SPP



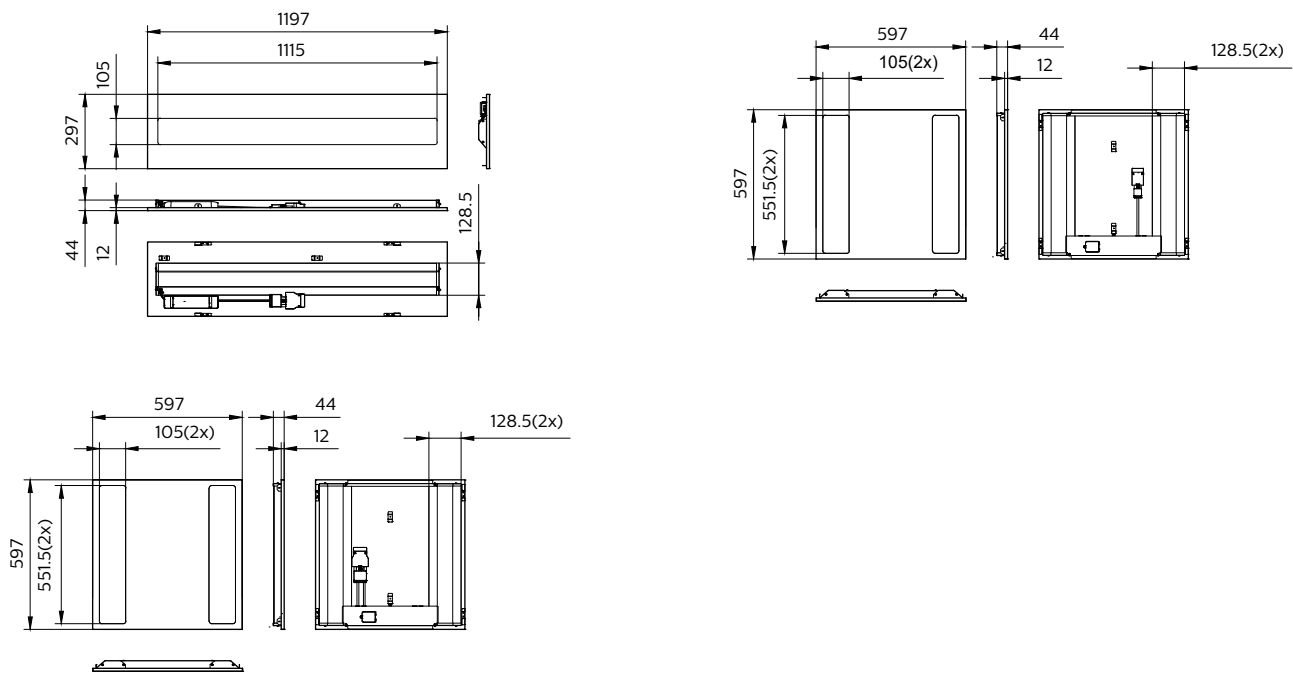
RC136B 31S_37S_43S/840 PSD
W60L60 NOC _SPP



RC136B 31S_37S_43S/840 PSU
W60L60 OC W3_SPP



Dimensional drawing

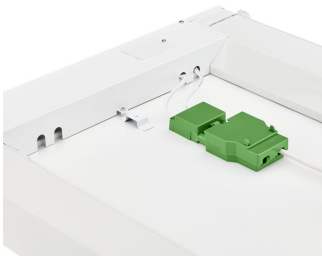


Product details

CoreLine Recessed Backside



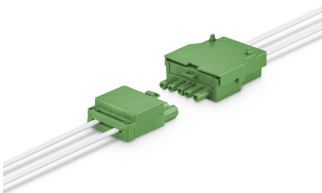
CoreLine Recessed Backside with connector



CoreLine Recessed Backside



CoreLine Recessed connector PSD (dali)



CoreLine recessed

Product details



CoreLine Recessed in ceiling



CoreLine_Recessed_RC136B_60x60



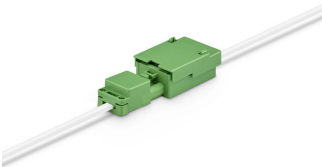
CoreLine Recessed Wileland



CoreLine Recessed



CoreLine Recessed connector PSU (On/Off)



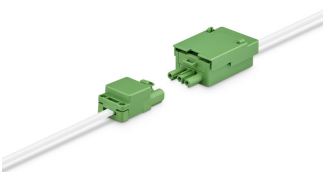
CoreLine Recessed connector PSU (On/Off)



CoreLine Recessed Edge



CoreLine Recessed Edge



CoreLine Recessed connector PSU (On/Off)

CoreLine recessed

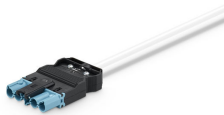
Product details

CoreLine Recessed Safety Cable



CoreLine Recessed in ceiling

Wieland W5 Dali Connector



General Information	
Driver included	Yes
Light source replaceable	No
Number of gear units	1 unit
Service tag	Yes
Light Technical	
All-in Type	All-in, Multi Lumen
Color rendering index (CRI)	>80
Operating and Electrical	
Input Voltage	220-240 V
Line Frequency	50 or 60 Hz
Power Consumption	31 W
Suitable for random switching	Yes
Mechanical and Housing	
Housing Color	White
Mech. impact protection code	IK03
Ingress protection code	IP20/44
Approval and Application	
Ambient temperature range	-10 to +40 °C
CE mark	Yes
ENEC mark	ENEC mark
Flammability mark	For mounting on normally flammable surfaces
Glow-wire test	Temperature 650 °C, duration 30 s
Flickering value (PstLM) - Flickering value as per EN 61000-3-3	1
Stroboscopic effect visibility measure (SVM)	1.6
Initial Performance (IEC Compliant)	
Luminous flux tolerance	+/-10%

Light Technical

Order Code	Full Product Name	Correlated Color	Luminous		Optic type
		Temperature (Nom)	Efficacy (rated) (Nom)	Luminous Flux	
911401881181	RC136B 31S_37S_43S/840 PSU W60L60 NOC W3	4000 K	140 lm/W	3,100 lm	Beam angle 100°
911401880981	RC136B 31S_37S_43S/840 PSD W30L120 OC	4000 K	140 lm/W	3,100 lm	Beam angle 84°
911401880481	RC136B 31S_37S_43S/840 PSU W60L60 OC	4000 K	140 lm/W	3,100 lm	Beam angle 84°
911401881081	RC136B 28S_34S_40S/830 PSU W60L60 NOC W3	3000 K	130 lm/W	2,800 lm	Beam angle 100°
911401881381	RC136B 31S_37S_43S/840 PSD W60L60 NOC W5	4000 K	140 lm/W	3,100 lm	Beam angle 100°
911401880681	RC136B 28S_34S_40S/830 PSD W60L60 OC	3000 K	130 lm/W	2,800 lm	Beam angle 84°
911401880781	RC136B 31S_37S_43S/840 PSD W60L60 OC	4000 K	140 lm/W	3,100 lm	Beam angle 84°
911401880881	RC136B 28S_34S_40S/830 PSD W30L120 OC	3000 K	130 lm/W	2,800 lm	Beam angle 84°
911401881581	RC136B 31S_37S_43S/840 PSD W60L60 OC W5	4000 K	140 lm/W	3,100 lm	Beam angle 84°
911401881481	RC136B 28S_34S_40S/830 PSD W60L60 OC W5	3000 K	130 lm/W	2,800 lm	Beam angle 84°
911401880281	RC136B 28S_34S_40S/830 PSU W60L60 NOC	3000 K	130 lm/W	2,800 lm	Beam angle 100°
911401880381	RC136B 31S_37S_43S/840 PSU W60L60 NOC	4000 K	140 lm/W	3,100 lm	Beam angle 100°
911401880581	RC136B 31S_37S_43S/840 PSD W60L60 NOC	4000 K	140 lm/W	3,100 lm	Beam angle 100°
911401881281	RC136B 31S_37S_43S/840 PSU W60L60 OC W3	4000 K	140 lm/W	3,100 lm	Beam angle 84°

Operating and Electrical

Order Code	Full Product Name	Protection class IEC	Order Code	Full Product Name	Protection class IEC
911401881181	RC136B 31S_37S_43S/840 PSU W60L60 NOC W3	Safety class I	911401880881	RC136B 28S_34S_40S/830 PSD W30L120 OC	Safety class II
911401880981	RC136B 31S_37S_43S/840 PSD W30L120 OC	Safety class II	911401881581	RC136B 31S_37S_43S/840 PSD W60L60 OC W5	Safety class II
911401880481	RC136B 31S_37S_43S/840 PSU W60L60 OC	Safety class I	911401881481	RC136B 28S_34S_40S/830 PSD W60L60 OC W5	Safety class II
911401881081	RC136B 28S_34S_40S/830 PSU W60L60 NOC W3	Safety class I	911401880281	RC136B 28S_34S_40S/830 PSU W60L60 NOC	Safety class I
911401881381	RC136B 31S_37S_43S/840 PSD W60L60 NOC W5	Safety class II	911401880381	RC136B 31S_37S_43S/840 PSU W60L60 NOC	Safety class I
911401880681	RC136B 28S_34S_40S/830 PSD W60L60 OC	Safety class II	911401880581	RC136B 31S_37S_43S/840 PSD W60L60 NOC	Safety class II
911401880781	RC136B 31S_37S_43S/840 PSD W60L60 OC	Safety class II	911401881281	RC136B 31S_37S_43S/840 PSU W60L60 OC W3	Safety class I

Controls and Dimming

CoreLine recessed

Order Code	Full Product Name	Maximum dim	
		Dimmable	level
911401881181	RC136B 31S_37S_43S/840 PSU W60L60 NOC W3	No	-
911401880981	RC136B 31S_37S_43S/840 PSD W30L120 OC	Yes	3%
911401880481	RC136B 31S_37S_43S/840 PSU W60L60 OC	No	-
911401881081	RC136B 28S_34S_40S/830 PSU W60L60 NOC W3	No	-
911401881381	RC136B 31S_37S_43S/840 PSD W60L60 NOC W5	Yes	3%
911401880681	RC136B 28S_34S_40S/830 PSD W60L60 OC	Yes	3%
911401880781	RC136B 31S_37S_43S/840 PSD W60L60 OC	Yes	3%
911401880881	RC136B 28S_34S_40S/830 PSD W30L120 OC	Yes	3%

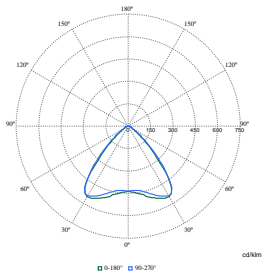
Order Code	Full Product Name	Maximum dim	
		Dimmable	level
911401881581	RC136B 31S_37S_43S/840 PSD W60L60 OC W5	Yes	3%
911401881481	RC136B 28S_34S_40S/830 PSD W60L60 OC W5	Yes	3%
911401880281	RC136B 28S_34S_40S/830 PSU W60L60 NOC	No	-
911401880381	RC136B 31S_37S_43S/840 PSU W60L60 NOC	No	-
911401880581	RC136B 31S_37S_43S/840 PSD W60L60 NOC	Yes	3%
911401881281	RC136B 31S_37S_43S/840 PSU W60L60 OC W3	No	-

Initial Performance (IEC Compliant)

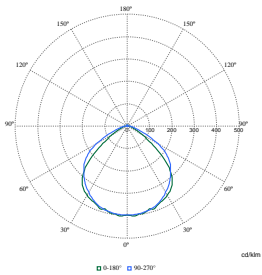
Order Code	Full Product Name	Initial chromaticity
911401881181	RC136B 31S_37S_43S/840 PSU W60L60 NOC W3	(0.38, 0.38) SDCM ≤3
911401880981	RC136B 31S_37S_43S/840 PSD W30L120 OC	(0.38, 0.38) SDCM ≤3
911401880481	RC136B 31S_37S_43S/840 PSU W60L60 OC	(0.38, 0.38) SDCM ≤3
911401881081	RC136B 28S_34S_40S/830 PSU W60L60 NOC W3	(0.43, 0.40) SDCM ≤3
911401881381	RC136B 31S_37S_43S/840 PSD W60L60 NOC W5	(0.38, 0.38) SDCM ≤3
911401880681	RC136B 28S_34S_40S/830 PSD W60L60 OC	(0.43, 0.40) SDCM ≤3
911401880781	RC136B 31S_37S_43S/840 PSD W60L60 OC	(0.38, 0.38) SDCM ≤3

Order Code	Full Product Name	Initial chromaticity
911401880881	RC136B 28S_34S_40S/830 PSD W30L120 OC	(0.43, 0.40) SDCM ≤3
911401881581	RC136B 31S_37S_43S/840 PSD W60L60 OC W5	(0.38, 0.38) SDCM ≤3
911401881481	RC136B 28S_34S_40S/830 PSD W60L60 OC W5	(0.43, 0.40) SDCM ≤3
911401880281	RC136B 28S_34S_40S/830 PSU W60L60 NOC	(0.43, 0.40) SDCM ≤3
911401880381	RC136B 31S_37S_43S/840 PSU W60L60 NOC	(0.38, 0.38) SDCM ≤3
911401880581	RC136B 31S_37S_43S/840 PSD W60L60 NOC	(0.38, 0.38) SDCM ≤3
911401881281	RC136B 31S_37S_43S/840 PSU W60L60 OC W3	(0.38, 0.38) SDCM ≤3

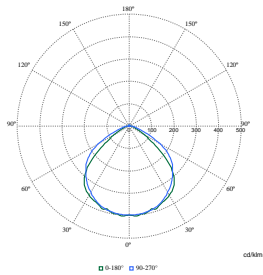
Polar Wide Diagrams



Polar Normal (separate) - null - 911401880781

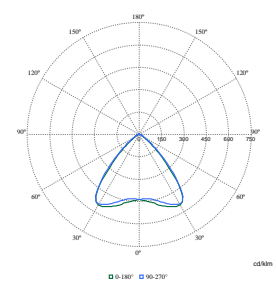
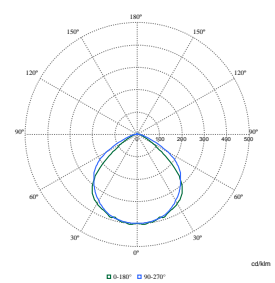
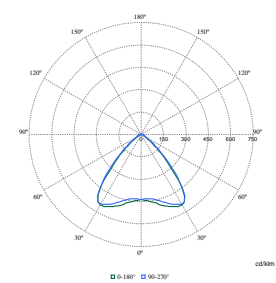


Polar Normal (separate) - null - 911401880281



Polar Normal (separate) - null - 911401880381

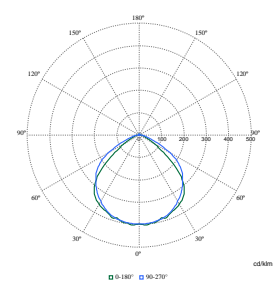
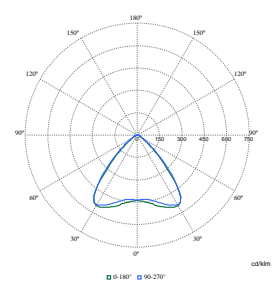
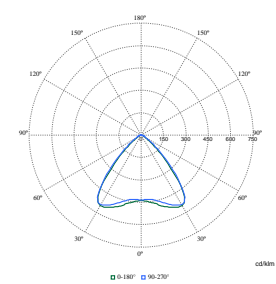
Polar Wide Diagrams



Polar Normal (separate) - null - 911401880481

Polar Normal (separate) - null - 911401880581

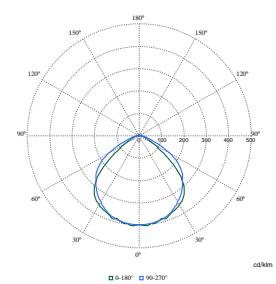
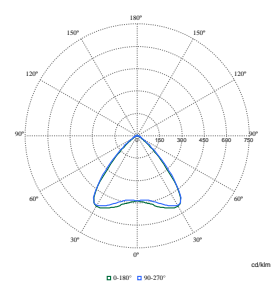
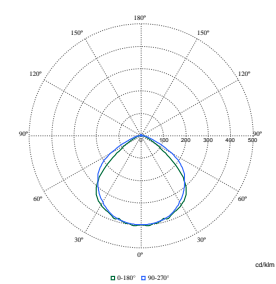
Polar Normal (separate) - null - 911401880681



Polar Normal (separate) - null - 911401880881

Polar Normal (separate) - null - 911401880981

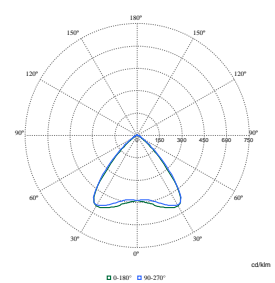
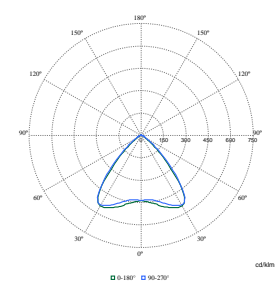
Polar Normal (separate) - null - 911401881081



Polar Normal (separate) - null - 911401881181

Polar Normal (separate) - null - 911401881281

Polar Normal (separate) - null - 911401881381



Polar Normal (separate) - null - 911401881481

Polar Normal (separate) - null - 911401881581

CoreLine recessed

