



CoreLine Recessed – the clear choice for LED

CoreLine recessed

Whether for a new building or renovation of an existing space, customers want lighting solutions that provide quality of light and substantial energy and maintenance savings. The new CoreLine Recessed range of LED products can be used to replace functional luminaires in general lighting applications. The process of selecting, installing and maintaining is so easy – it's a simple switch.

Benefits

- Enables a simple switch from basic conventional luminaires to LED luminaires
- Enables a simple switch from basic conventional fluorescent luminaires to LED luminaires
- Energy savings of up to 45% compared to functional TL-D luminaires
- Energy saving of over 45% compared to functional TL5 luminaires
- Slim design with a height of less than 35 mm
- Slim design with a height of only 35 mm

Features

- Integrated LED technology
- Integrated LED technology
- Slim housing
- Slim housing
- Surface-mounted version also available (also suitable for suspension)
- Surface-mounted version also available (also suitable for suspension)

Application

- General lighting
- General lighting

CoreLine recessed

Warnings and Safety

- The product is IPX0 & as such is not protected against water ingress & as such we strongly recommend that The environment in which The luminaire is to be installed is suitably checked
- If the above advice is not taken and the luminaires are subject to water ingress, Philips / Signify cannot guarantee safe failure & product warranty will become void

Versions



CoreLine Recessed



RC136B 31S_37S_43S/840 PSU
W60L60 NOC W3_SPP



RC136B 31S_37S_43S/840 PSD
W30L120 OC _SPP



RC136B 31S_37S_43S/840 PSU
W60L60 OC _SPP

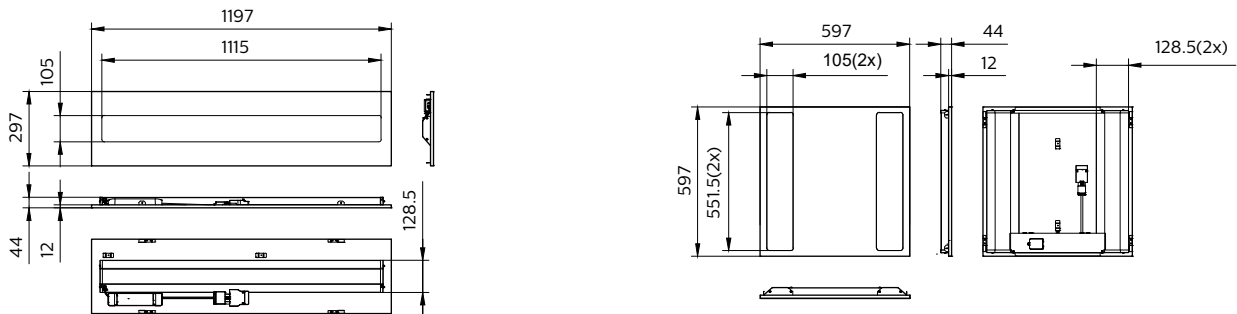


CoreLine Recessed



RC136B 28S_34S_40S/830 PSU
W60L60 NOC _SPP

Dimensional drawing



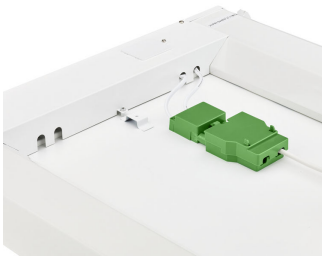
CoreLine recessed

Product details

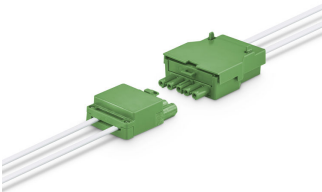
CoreLine Recessed Backside



CoreLine Recessed Backside with connector



CoreLine Recessed connector PSD (dali)



CoreLine Recessed in ceiling



CoreLine_Recessed_RC136B_60x60



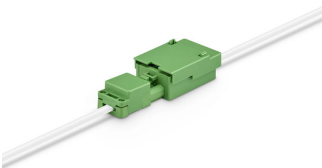
CoreLine Recessed



CoreLine Recessed connector PSU (On/Off))



CoreLine Recessed connector PSU (On/Off))



CoreLine Recessed Edge



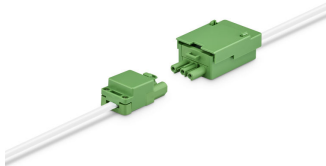
CoreLine recessed

Product details

CoreLine Recessed Edge



CoreLine Recessed connector PSU
(On/Off))



CoreLine Recessed Safety Cable



CoreLine Recessed in ceiling



General Information	
Driver included	Yes
Light source replaceable	No
Number of gear units	1 unit
Service tag	Yes
Light Technical	
Color rendering index (CRI)	>80
Operating and Electrical	
Input Voltage	220–240 V
Line Frequency	50 or 60 Hz
Suitable for random switching	Yes
Mechanical and Housing	
Housing Color	White
Mech. impact protection code	IK03
Ingress protection code	IP20/44
Approval and Application	
CE mark	Yes
ENEC mark	ENEC mark
Flammability mark	For mounting on normally flammable surfaces
Glow-wire test	Temperature 650 °C, duration 30 s
Flickering value (PstLM) - Flickering value as per EN 61000-3-3	1
Initial Performance (IEC Compliant)	
Luminous flux tolerance	+/-10%

Light Technical (1/2)

Order Code	Full Product Name	All-in Type	Correlated Color Temperature (Nom)	Luminous Efficacy (rated) (Nom)	Luminous Flux
911401808285	RC136B 60S/840 PSU W60L60 OC	-	4000 K	135 lm/W	6,000 lm
911401881181	RC136B 31S_37S_43S/840 PSU W60L60 NOC W3	All-in, Multi Lumen	4000 K	140 lm/W	3,100 lm
911401880981	RC136B 31S_37S_43S/840 PSD W30L120 OC	All-in, Multi Lumen	4000 K	140 lm/W	3,100 lm
911401880481	RC136B 31S_37S_43S/840 PSU W60L60 OC	All-in, Multi Lumen	4000 K	140 lm/W	3,100 lm
911401867382	RC136B 43S/840 WIA W30L120 OC	-	4000 K	140 lm/W	4,300 lm
911401880281	RC136B 28S_34S_40S/830 PSU W60L60 NOC	All-in, Multi Lumen	3000 K	130 lm/W	2,800 lm

Light Technical (2/2)

Order Code	Full Product Name	Optic type	Order Code	Full Product Name	Optic type
911401808285	RC136B 60S/840 PSU W60L60 OC	Beam angle 84°	911401880481	RC136B 31S_37S_43S/840 PSU W60L60 OC	Beam angle 84°
911401881181	RC136B 31S_37S_43S/840 PSU W60L60 NOC W3	Beam angle 100°	911401867382	RC136B 43S/840 WIA W30L120 OC	Beam angle 84°
911401880981	RC136B 31S_37S_43S/840 PSD W30L120 OC	Beam angle 84°	911401880281	RC136B 28S_34S_40S/830 PSU W60L60 NOC	Beam angle 100°

Operating and Electrical

Order Code	Full Product Name	Protection class	Power
		IEC	Consumption
911401808285	RC136B 60S/840 PSU W60L60 OC	Safety class II	44 W
911401881181	RC136B 31S_37S_43S/840 PSU W60L60 NOC W3	Safety class I	31 W
911401880981	RC136B 31S_37S_43S/840 PSD W30L120 OC	Safety class II	31 W

Order Code	Full Product Name	Protection class	Power
		IEC	Consumption
911401880481	RC136B 31S_37S_43S/840 PSU W60L60 OC	Safety class I	31 W
911401867382	RC136B 43S/840 WIA W30L120 OC	Safety class II	31 W
911401880281	RC136B 28S_34S_40S/830 PSU W60L60 NOC	Safety class I	31 W

Controls and Dimming

CoreLine recessed

Order Code	Full Product Name	Maximum dim	
		Dimmable	level
911401808285	RC136B 60S/840 PSU W60L60 OC	No	-
911401881181	RC136B 31S_37S_43S/840 PSU W60L60 NOC W3	No	-
911401880981	RC136B 31S_37S_43S/840 PSD W30L120 OC	Yes	3%

Order Code	Full Product Name	Maximum dim	
		Dimmable	level
911401880481	RC136B 31S_37S_43S/840 PSU W60L60 OC	No	-
911401867382	RC136B 43S/840 WIA W30L120 OC	Yes	1%
911401880281	RC136B 28S_34S_40S/830 PSU W60L60 NOC	No	-

Approval and Application

Order Code	Full Product Name	Ambient temperature range	Stroboscopic effect visibility measure (SVM)
911401808285	RC136B 60S/840 PSU W60L60 OC	-10 to +35 °C	0.4
911401881181	RC136B 31S_37S_43S/840 PSU W60L60 NOC W3	-10 to +40 °C	1.6
911401880981	RC136B 31S_37S_43S/840 PSD W30L120 OC	-10 to +40 °C	1.6

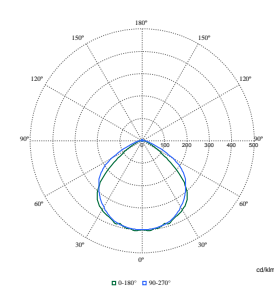
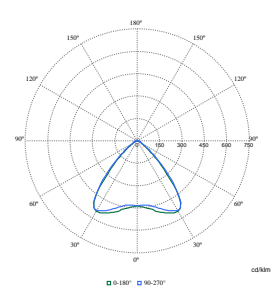
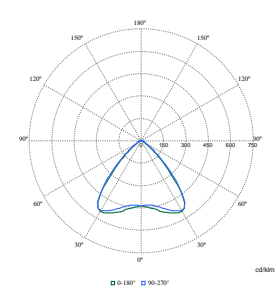
Order Code	Full Product Name	Ambient temperature range	Stroboscopic effect visibility measure (SVM)
911401880481	RC136B 31S_37S_43S/840 PSU W60L60 OC	-10 to +40 °C	1.6
911401867382	RC136B 43S/840 WIA W30L120 OC	-10 to +40 °C	0.4
911401880281	RC136B 28S_34S_40S/830 PSU W60L60 NOC	-10 to +40 °C	1.6

Initial Performance (IEC Compliant)

Order Code	Full Product Name	Initial chromaticity
911401808285	RC136B 60S/840 PSU W60L60 OC	(0.38, 0.38) SDCM ≤3
911401881181	RC136B 31S_37S_43S/840 PSU W60L60 NOC W3	(0.38, 0.38) SDCM ≤3
911401880981	RC136B 31S_37S_43S/840 PSD W30L120 OC	(0.38, 0.38) SDCM ≤3

Order Code	Full Product Name	Initial chromaticity
911401880481	RC136B 31S_37S_43S/840 PSU W60L60 OC	(0.38, 0.38) SDCM ≤3
911401867382	RC136B 43S/840 WIA W30L120 OC	(0.38, 0.38) SDCM ≤3
911401880281	RC136B 28S_34S_40S/830 PSU W60L60 NOC	(0.43, 0.40) SDCM ≤3

Polar Wide Diagrams

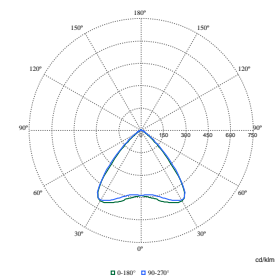


Polar Normal (separate) - null - 911401808285

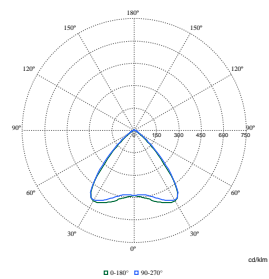
Polar Normal (separate) - null - 911401867382

Polar Normal (separate) - null - 911401880281

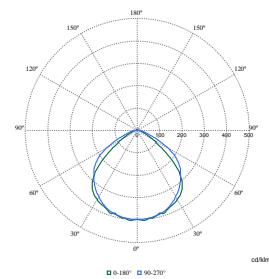
Polar Wide Diagrams



Polar Normal (separate) - null - 911401880481



Polar Normal (separate) - null - 911401880981



Polar Normal (separate) - null - 911401881181

