



# Philips SlimBlend gen2: high performance, advanced control

## SlimBlend Gen2

Offices are looking for high-performance lighting that enhances performance, comfort, well-being, and sustainability. That's why 'surface of light' solutions that deliver excellent quality of light with great functionality and connectivity are in such demand. Like Philips SlimBlend Gen2 – a complete family of slim luminaires designed for enhanced well-being and circularity. SlimBlend Gen2 luminaires offer state-of-the-art efficacy and excellent light quality (CRI>90) with upgradability features and repairability that promise a long lifetime. They are also designed for recyclability, making them a truly circular, green choice. But it's the high-quality light that makes SlimBlend Gen2 luminaires really stand out. The special Micro Hexagonal Optics (MXO) provides glare-free comfort & also infuses the homogeneous light with sparkles, creating a lively surface of light that enhances interiors and offers full Office compliance. SlimBlend Gen 2 is a minimalist solution with superior lighting specifications combined with a best-in-class connectivity using Interact Pro – all with a sustainable approach to high-performance office lighting.

### Benefits

- Highly efficient LED luminaire with choice of mounting options (recessed, suspended, surface mounted)
- Comfortable, glare-free Office-compliant
- Competitive solution with good lighting specifications
- Sustainable and best-in-class connected offer

# SlimBlend Gen2

## Features

- Best-in-class efficacy up to 140lm/W supports green building design and energy saving subsidy criteria
- CRI90 with Tunable White option
- Office-compliant lighting using both MXO optics and Opal cover
- Long lifetime up to 50,000 hours @L90
- Quick connector or Wieland connector for simpler, faster installation
- Prepared for circularity (no glue, replaceable electronics, upgradable system, efficient and long lifetime) plus supporting Environmental Product Declaration (EPD) guide
- Connected system ready with Interact Pro scalable platform using integrated sensors and/or wireless drivers for data collection, occupancy, daylight regulation and wayfinding

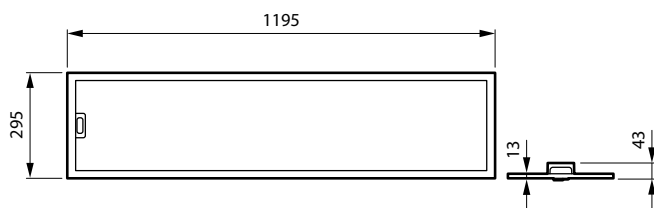
## Application

- Offices
- Healthcare
- Education

## Versions



## Dimensional drawing



# SlimBlend Gen2

## Product details



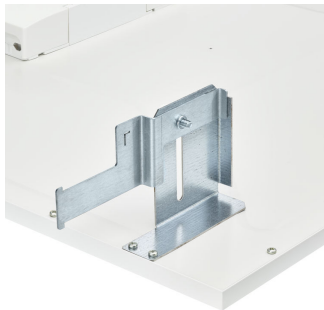
SlimBlendGen2 Backview \_DPP



SlimBlendGen2\_IA5 Sensor with MXO



SlimBlendGen2\_IA5 Sensor\_with OC



SlimBlendGen2 with CPC accessory DPP01



SlimBlendGen2\_Suspended with sensor\_W30L120



Connector- Wieland DPP01



SlimBlendGen2\_Suspended with sensor\_W60L60



RC330V W60L60 sensor with Surface mounted accessories



RC330V W30L120 with Surface mounted accessories



RC330V W30L120 sensor with Surface mounted accessories

SlimBlend Gen2

Product details



RC330V W60L60 with Surface mounted accessories



SlimBlendGen2 with CPC accessory DPP02



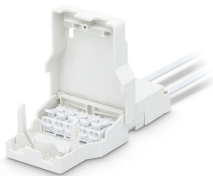
PIP connector DPP02



SlimBlend Gen2  
RC330Z\_SMB\_W30L120



Connector- Wieland DPP02



PIP connector DPP03



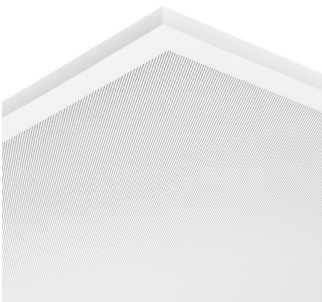
Safety cable



SlimBlendGen2\_IA4 Sensor with  
MXO

# SlimBlend Gen2

## Product details



SlimBlendGen2 MXO-optics



SlimBlend Gen2  
RC330Z\_SMB\_W60L60



SlimBlendGen2 Backview with IA4  
sensor



SlimBlendGen2\_Suspended  
without sensor\_W60L60



SlimBlend Gen2\_Backview with EL  
& Sensor\_DPP



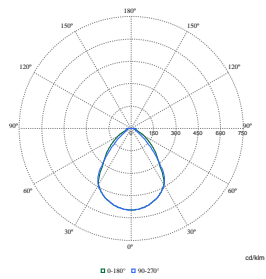
SlimBlendGen2\_Suspended  
without sensor\_W30L120



PIP connector DPP01

## SlimBlend Gen2

### Polar Wide Diagrams



Polar Normal (separate) - RC330VI -  
910505102475

