



Philips SlimBlend gen2: high performance, advanced control

SlimBlend Gen2

Offices are looking for high-performance lighting that enhances performance, comfort, well-being and sustainability. That's why 'surface of light' solutions that deliver excellent quality of light with great functionality and connectivity are in such demand. Philips SlimBlend Gen2 is a complete family of slim luminaires designed for enhanced well-being and circularity. SlimBlend Gen2 luminaires offer state-of-the-art efficacy and excellent light quality (CRI>90) with upgradable features and repairability that promise a long lifetime. They are also designed for recyclability, making them a truly circular, green choice. But it's the high-quality light that makes SlimBlend Gen2 luminaires really stand out. The special Micro Hexagonal Optics (MXO) provide glare-free comfort and also infuse the homogeneous light with sparkles, creating a lively surface of light that enhances interiors and offers full office compliance. The SlimBlend Gen 2 is a minimalist solution with superior lighting specifications combined with a best-in-class connectivity using Interact Pro – all with a sustainable approach to high-performance office lighting.

Benefits

- A highly efficient LED luminaire with a choice of mounting options (recessed, suspended, surface-mounted)
- Comfortable, glare-free office-compliant
- A competitive solution with good lighting specifications
- A sustainable and best-in-class connected offer

SlimBlend Gen2

Features

- Best-in-class efficacy up to 140 lm/W supports green building design and energy-saving subsidy criteria
- CRI90 with a tunable white option
- Office-compliant lighting using both MXO optics and Opal cover
- Long lifetime up to 50,000 hours @L90
- Quick connector or Wieland connector for simpler, faster installation
- Prepared for circularity (no glue, replaceable electronics, upgradable system, efficient and long lifetime) plus supporting Environmental Product Declaration (EPD) guide
- A connected system ready with the Interact Pro scalable platform using integrated sensors and/or wireless drivers for data collection, occupancy, daylight regulation and wayfinding

Application

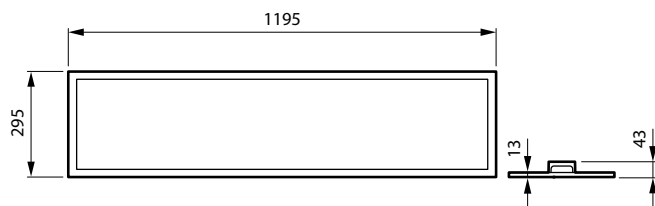
- Offices
- Healthcare
- Education

Versions



SlimBlendGen2 RecessMouted
RC330V W30L120 MXO SPP

Dimensional drawing



SlimBlend Gen2

Product details



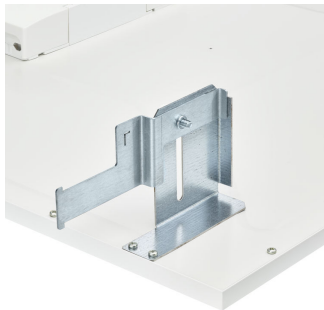
SlimBlendGen2 Backview _DPP



SlimBlendGen2_IA5 Sensor with MXO



SlimBlendGen2_IA5 Sensor_with OC



SlimBlendGen2 with CPC accessory DPP01



SlimBlendGen2_Suspended with sensor_W30L120



Connector- Wieland DPP01



SlimBlendGen2_Suspended with sensor_W60L60



RC330V W60L60 sensor with Surface mounted accessories



RC330V W30L120 with Surface mounted accessories



RC330V W30L120 sensor with Surface mounted accessories

SlimBlend Gen2

Product details



RC330V W60L60 with Surface mounted accessories



SlimBlendGen2 with CPC accessory DPP02



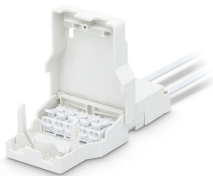
PIP connector DPP02



SlimBlend Gen2
RC330Z_SMB_W30L120



Connector- Wieland DPP02



PIP connector DPP03



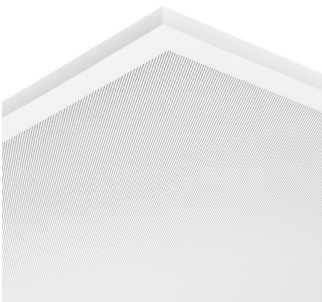
Safety cable



SlimBlendGen2_IA4 Sensor with
MXO

SlimBlend Gen2

Product details



SlimBlendGen2 MXO-optics



SlimBlend Gen2
RC330Z_SMB_W60L60



SlimBlendGen2 Backview with IA4
sensor



SlimBlendGen2_Suspended
without sensor_W60L60



SlimBlend Gen2_Backview with EL
& Sensor_DPP

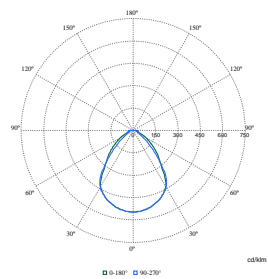


SlimBlendGen2_Suspended
without sensor_W30L120



PIP connector DPP01

Polar Wide Diagrams



Polar Normal (separate) - RC330VI -
910505102494

