



A troffer beyond visual comfort

Aura

As an innovative troffer, CoreView Pro RC430V uses indirect and direct light output to reach UGR19 without using heavy and big glare control plates. The central module can be easily replaceable for future maintenance. The light from the central light module can be controlled separately to fit multiple applications. BioUp technology provides better well being for the people in indoor environment.

Benefits

- Slim and nice look and feel
- Easy maintenance on site
- Fit multiple applications for office, healthcare
- Support better well being for people in indoor

Features

- Unique light module design with indirect and direct light to reach UGR19
- Replaceable light module
- Adjustable up and downward light output ratio
- BioUp technology enabled

Application

- Office
- Meeting room
- Healthcare

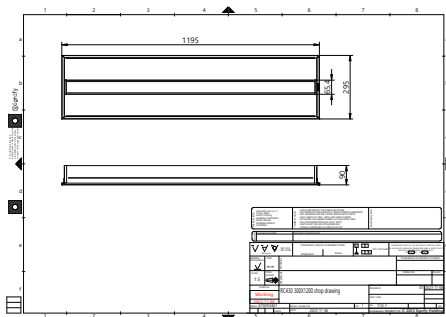
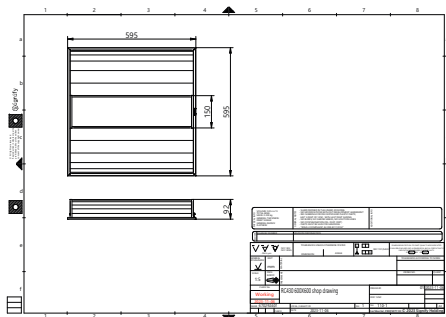
Versions



CoreView Pro

CoreView Pro

Dimensional drawing



General Information	
Driver included	Yes
Number of gear units	1 unit
Light Technical	
Beam angle of light source	115 degree(s)
Correlated Color Temperature (Nom)	4000 K
Optic type	Beam angle 90°
Operating and Electrical	
Protection class IEC	Safety class II
Input Voltage	220-240 V
Line Frequency	50 or 60 Hz
Suitable for random switching	Yes
Controls and Dimming	
Dimmable	DALI
Maximum dim level	1%
Mechanical and Housing	
Optical cover type	Prismatic bowl/ cover linear horizontal
Housing Color	White RAL 9003
Mech. impact protection code	IK03
Ingress protection code	IP20
Approval and Application	
Ambient temperature range	-20 to +40 °C
CE mark	Yes
ENEC mark	ENEC mark
Flammability mark	For mounting on normally flammable surfaces
Glow-wire test	Temperature 650 °C, duration 30 s
Initial Performance (IEC Compliant)	
Luminous flux tolerance	-10% / +10%

Light Technical

Order Code	Full Product Name	Color rendering	Luminous Efficacy	Number of	
		index (CRI)	(rated) (Nom)	Luminous Flux	light sources
911401524945	RC430V LED36/940 W60L60 PSD OC	90	112 lm/W	3,600 lm	144
911401523045	RC430V LED40/840 W30L120 PSD OC	80	126 lm/W	4,000 lm	378

Operating and Electrical

Order Code	Full Product Name	Power Consumption
911401524945	RC430V LED36/940 W60L60 PSD OC	33 W

Order Code	Full Product Name	Power Consumption
911401523045	RC430V LED40/840 W30L120 PSD OC	32 W

Initial Performance (IEC Compliant)

Order Code	Full Product Name	Initial chromaticity
911401524945	RC430V LED36/940 W60L60 PSD OC	(0.3825,0.3795)SDCM<3

Order Code	Full Product Name	Initial chromaticity
911401523045	RC430V LED40/840 W30L120 PSD OC	(0.381,0.3774)SDCM<3

