



Philips TrueBlend: Proposition built around flexibility, choice and performance.

TrueBlend Recessed

When specifying lighting for premium office applications, technical specifiers need to deal with a wide variety of requirements and constraints linked to ceiling types and customer/architect preferences. Philips TrueBlend is a flexible luminaire portfolio offering choice in look and feel for the architect, and mechanical fit to many different ceiling types and a palette of optics to choose from. Philips TrueBlend is built around flexibility and choice; our new recessed office range is a perfect fit for your non-standard ceiling or renovation project where luminaires need to fit the hole of existing luminaires. A wide variety of optics, best-in-class efficacy, combined with our wellbeing LED spectra and Interact connectivity, offers choice in performance and look and feel. TrueBlend helps save energy & provide the right level of light. Not only is it compliant with the WELL Building Standard for Light, but also is rated UGR<19, which is compliant with all office norms (OC). This luminaire family is available in different lengths, light outputs, optics, housing colours, various bracket heights and connectors. This offers the ultimate design flexibility and unlimited possibilities. TrueBlend luminaires offer state-of-the-art efficacy and excellent light quality (CRI>90) with upgradability features and repairability that promises a long lifetime. They are also designed for recyclability, making them a truly circular, environmentally friendly choice. So, TrueBlend is an all-in-one solution with superior lighting specifications combined with a sustainable approach to high-performance office lighting.

TrueBlend Recessed

Benefits

- Designed for enhanced well-being of people with high quality of light.
- Best-in-class efficacy with superior lighting specifications and long lifetime
- Sustainable, future-ready, scalable smart office capabilities with best-in-class Interact proposition.
- Significantly reduces operational costs for an attractive payback time.

Features

- Best-in-class efficacy up to 170lm/W supports green building design and energy saving subsidy criteria.
- Office-compliant lighting with wide optics choices like DLO, MLO & mini cups.
- Highly uniform lighting with excellent glare control ($UGR < 19$, $L65 < 3000 \text{cd/m}^2$)
- 3000K, 4000K, Tunable White & tunable white bio-up versions, all CRI > 90
- Long lifetime up to 50,000 hours@L90
- Wide connector choice for simpler and faster installation
- A connected system ready with the Interact Pro scalable platform using integrated sensors and/or wireless drivers for data collection, occupancy, daylight regulation and wayfinding.
- Prepared for circularity (no glue, replaceable electronics, upgradable system, efficient and long lifetime) plus supporting Environmental Product Declaration (EPD) guide.
- Recessed mounting options, including all accessories.

Application

- Offices
- Education
- Retail

Warnings and Safety

- The product is IP20 and, as such, is not protected against water ingress. Therefore, we strongly recommend that the environment in which the luminaire is to be installed is suitably checked.
- If the above advice is not taken and the luminaires are subject to water ingress, Philips/Signify cannot guarantee safe failure and the product warranty will become void.

Versions



TrueBlend Recessed RC453B MXO



TrueBlend Recessed RC453B DLO U4



TrueBlend Recessed RC453X MXO



TrueBlend Recessed RC453B DLO

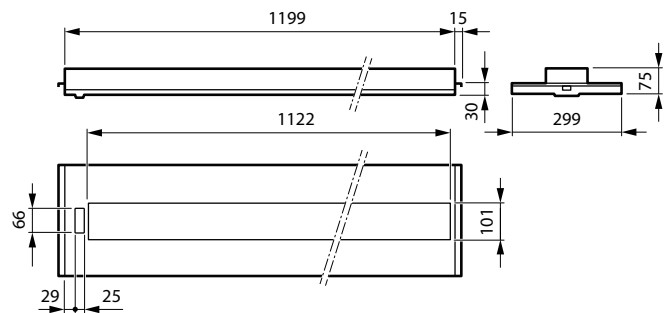
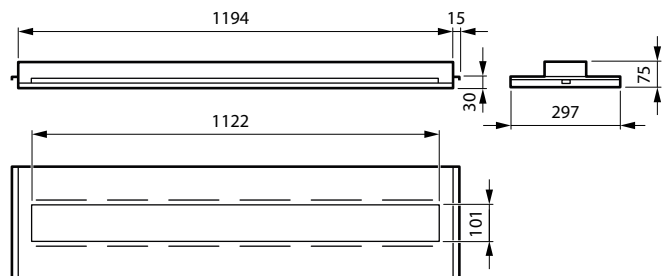
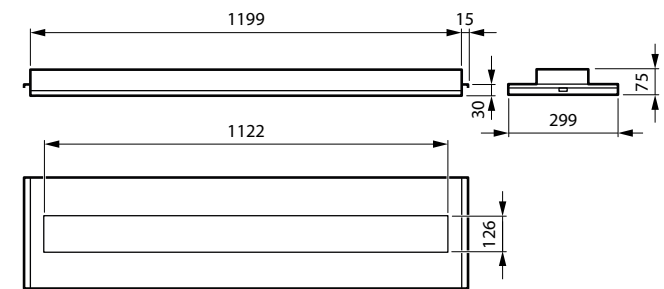
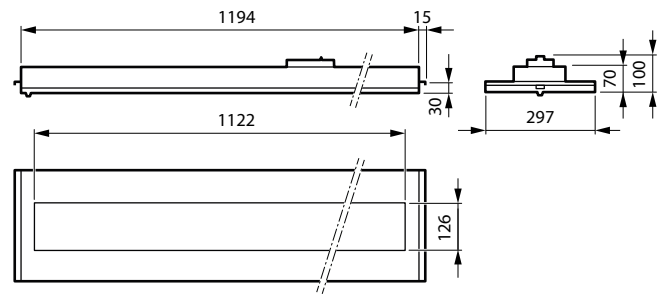
TrueBlend Recessed

Versions



TrueBlend Recessed RC453B DLO U5

Dimensional drawing



TrueBlend Recessed

Product details



TrueBlend Recessed DLO- optics
DPP



TrueBlend Recessed U5 sensor



TrueBlend Recessed MXO- optics
DPP



TrueBlend Recessed U4 sensor



TrueBlend Recessed EL indicator

TrueBlend Recessed

General Information	
Driver included	Yes
Number of gear units	Unit
Service Tag	Yes
Light Technical	
Correlated Colour Temperature (Nom)	4000 K
Upwards light output ratio	0
Operating and Electrical	
Protection class IEC	Safety class I
Input Voltage	220 to 240 V
Line Frequency	50 to 60 Hz
Controls and Dimming	
Dimmable	Yes
Maximum dim level	1%
Mechanical and Housing	
Housing Colour	White
Mech. impact protection code	IK03
Ingress protection code	IP20
Emergency Operation	
Central Emergency	Yes
Approval and Application	
Ambient temperature range	+10 to +35 °C
CE mark	Yes
ENEC mark	ENEC mark
Flammability mark	For mounting on normally flammable surfaces
Glow-wire test	Temperature 850 °C, duration 30 s
Initial Performance (IEC Compliant)	
Initial chromaticity	(0.38, 0.38) SDCM ≤3.0
Luminous flux tolerance	+/-10%
Product Data	
Product family code	RC455B

General Information

Order Code	Full Product Name	Lamp family code
910505103978	RC453B 28S/UE840 MXO 9010 L1200 W300 B30	28S
910505103983	RC453B 28S/940 MXO ELP3 W6 L1195 W298B30	28S
910505103973	RC453B 42S/940 DLO 9010 U4 L1200 W300B30	42S
910505103984	RC453X 28S/840 DLO L1195 W298 B30	28S
910505103971	RC453B 28S/840 DLO L1200 W300 B30	28S
910505103975	RC453B 36S/940 DLO U5 L1200 W300 B30	34S

Light Technical

Order Code	Full Product Name	Colour rendering index (CRI)	Luminous efficacy (rated) (nom.)	Luminous Flux	Optic type
910505103978	RC453B 28S/UE840 MXO	>80	144 lm/W	2,800 lm	Wide beam

Order Code	Full Product Name	Colour rendering index (CRI)	Luminous efficacy (rated) (nom.)	Luminous Flux	Optic type
	9010 L1200 W300 B30				

TrueBlend Recessed

Order Code	Full Product Name	Colour rendering index (CRI)	Luminous efficacy (rated) (nom.)	Luminous Flux	Optic type
910505103983	RC453B 28S/940 MXO ELP3 W6 L1195 W298B30	>90	100 lm/W	2,800 lm	Wide beam
910505103973	RC453B 42S/940 DLO 9010 U4 L1200 W300B30	>90	162 lm/W	4,200 lm	Wide beam office-compliant
910505103984	RC453X 28S/840 DLO L1195 W298 B30	>80	161 lm/W	2,800 lm	Wide beam office-compliant

Operating and Electrical

Order Code	Full Product Name	Power Consumption	Suitable for random switching
910505103978	RC453B 28S/UE840 MXO 9010 L1200 W300 B30	19.4 W	No
910505103983	RC453B 28S/940 MXO ELP3 W6 L1195 W298B30	28 W	No
910505103973	RC453B 42S/940 DLO 9010 U4 L1200 W300B30	26 W	Yes

Controls and Dimming

Order Code	Full Product Name	Embedded control
910505103978	RC453B 28S/UE840 MXO 9010 L1200 W300 B30	-
910505103983	RC453B 28S/940 MXO ELP3 W6 L1195 W298B30	-
910505103973	RC453B 42S/940 DLO 9010 U4 L1200 W300B30	Interact SNS210 sensor

Mechanical and Housing

Order Code	Full Product Name	Optical cover type
910505103978	RC453B 28S/UE840 MXO 9010 L1200 W300 B30	Micro Hexagonal Optic
910505103983	RC453B 28S/940 MXO ELP3 W6 L1195 W298B30	Micro Hexagonal Optic
910505103973	RC453B 42S/940 DLO 9010 U4 L1200 W300B30	Acrylic bowl/cover frosted

Emergency Operation

Order Code	Full Product Name	Colour rendering index (CRI)	Luminous efficacy (rated) (nom.)	Luminous Flux	Optic type
910505103971	RC453B 28S/840 DLO L1200 W300 B30	>80	161 lm/W	2,800 lm	Wide beam office-compliant
910505103975	RC453B 36S/940 DLO U5 L1200 W300 B30	>90	160 lm/W	3,600 lm	Wide beam office-compliant

Order Code	Full Product Name	Power Consumption	Suitable for random switching
910505103984	RC453X 28S/840 DLO L1195 W298 B30	17.4 W	No
910505103971	RC453B 28S/840 DLO L1200 W300 B30	17.4 W	No
910505103975	RC453B 36S/940 DLO U5 L1200 W300 B30	22.5 W	Yes

Order Code	Full Product Name	Embedded control
910505103984	RC453X 28S/840 DLO L1195 W298 B30	-
910505103971	RC453B 28S/840 DLO L1200 W300 B30	-
910505103975	RC453B 36S/940 DLO U5 L1200 W300 B30	Interact SC1500 Multi-sensor bundle

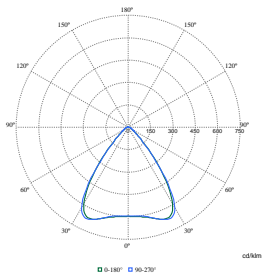
Order Code	Full Product Name	Optical cover type
910505103984	RC453X 28S/840 DLO L1195 W298 B30	Acrylic bowl/cover frosted
910505103971	RC453B 28S/840 DLO L1200 W300 B30	Acrylic bowl/cover frosted
910505103975	RC453B 36S/940 DLO U5 L1200 W300 B30	Acrylic bowl/cover frosted

TrueBlend Recessed

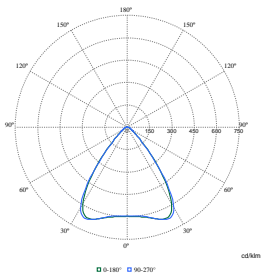
Order Code	Full Product Name	Emergency lighting	Emergency flux	Power consumption during Central DC emergency mode	Rated duration of the emergency lighting (when fully charged)
910505103978	RC453B 28S/UE840 MXO 9010 L1200 W300 B30	DC operated central emergency lighting	-	-	-
910505103983	RC453B 28S/940 MXO ELP3 W6 L1195 W298B30	Emergency lighting 3-hour duration Pro version	405 lm	6 W	3 h
910505103973	RC453B 42S/940 DLO 9010 U4	DC operated central emergency lighting	-	-	-

Order Code	Full Product Name	Emergency lighting	Emergency flux	Power consumption during Central DC emergency mode	Rated duration of the emergency lighting (when fully charged)
910505103984	L1200 W300B30 RC453X 28S/840 DLO L1195 W298 B30	DC operated central emergency lighting	-	-	-
910505103971	RC453B 28S/840 DLO L1200 W300 B30	DC operated central emergency lighting	-	-	-
910505103975	RC453B 36S/940 DLO U5 L1200 W300 B30	DC operated central emergency lighting	-	-	-

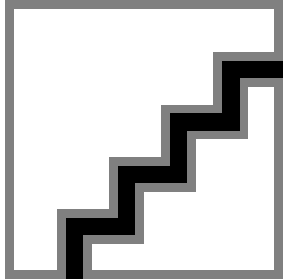
Polar Wide Diagrams



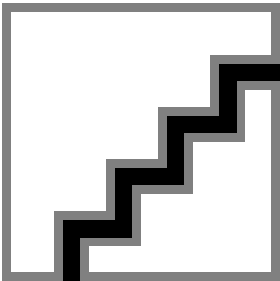
Polar Normal (separate) - RC450BI - 910505103973



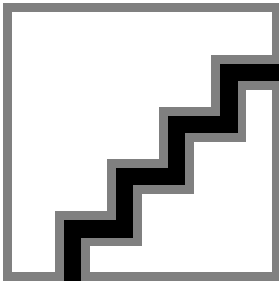
Polar Normal (separate) - RC450BI - 910505103983



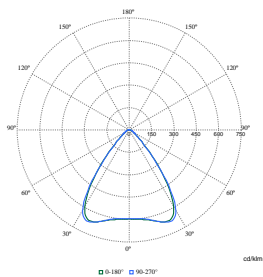
Polar Normal (separate) - RC450BI - 910505103978



Polar Normal (separate) - RC450BI - 910505103971



Polar Normal (separate) - RC450BI - 910505103984



Polar Normal (separate) - RC450BI - 910505103975

