



Philips TrueSlim: True sustainable slim LED luminaire for special ceiling

TrueSlim

Architects need a lighting solution that matches the interior architecture of the space they are enhancing. TrueSlim is an offering that meets the flexibility requirements for ceiling integration, suitable for a InterAlu & Haufe ceiling types. Specifiers & ceiling integrators need luminaires that save energy, at the same time as providing the right level of light to fit into a specific ceiling dimension. Not only is it compliant with the WELL Building Standard for Light, TrueSlim is rated UGR<19, which is compliant with all office norms (OC). These luminaires in the family are available in different lengths and light outputs. This offers the ultimate design flexibility and unlimited possibilities. TrueSlim luminaires are also a sustainable, with efficiency up to 110 lm/W, lifetime of L90 at 50K hrs and the option to upgrade to wireless connectivity and control.

Benefits

- Office compliant lighting
- Future-ready, scalable smart office capabilities
- Compatible with the Interact connected lighting system
- Supports sustainable building design and energy-saving subsidy criteria

Features

- Uniform lighting with excellent glare control ($UGR < 19$, $L65 < 3000 \text{cd/m}^2$)
- Luminaire is specially designed for use in linear lamella ceilings
- 3000K & 4000K in CRI > 80
- Long lifetime L90@50,000 hours
- Stand-alone driver with default 5m cable. DALI version: 2 luminaires with 1 driver; Interact sensor version: 1 luminaire with 1 driver.
- Luminaire is hanging on the lamella with spring clips for easy installation.
- Integrated sensors/wireless drivers for data collection, occupancy, daylight regulation and wayfinding
- Environmental Product Declaration (EPD)

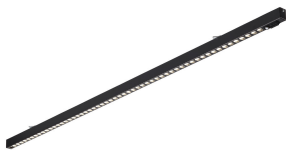
Application

- Offices
- Education
- Hospitality

Warnings and Safety

- The product is IP20 and, as such, is not protected against water ingress. Therefore, we strongly recommend that the environment in which the luminaire is to be installed is suitably checked.
- If the above advice is not taken and the luminaires are subject to water ingress, Philips / Signify cannot guarantee safe failure and the product warranty will become void.

Versions



TrueSlim RC710B L120



TrueSlim RC710B L60 PSED

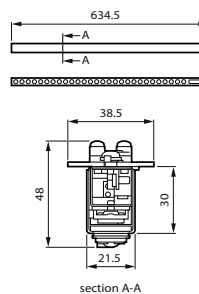
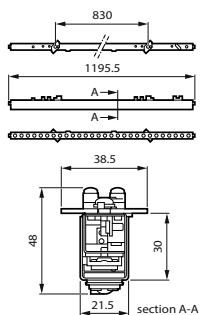


TrueSlim RC710B 2XL120 PSED

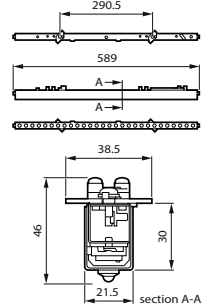
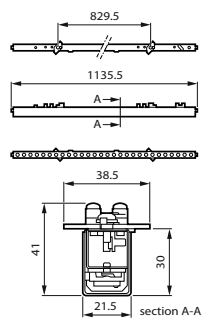
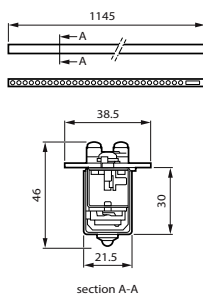
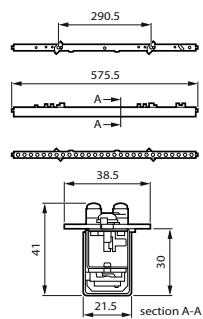


TrueSlim RC710B 2XL60 PSED

Dimensional drawing



Dimensional drawing



Product details



TrueSlim RC710B 2xL60 COLLAGE



TrueSlim RC710B 1xL60 COLLAGE



TrueSlim RC710B EL COLLAGE

General Information	
Driver included	Yes
Number of gear units	1 unit
Light Technical	
Color rendering index (CRI)	≥80
Optic type	Very wide beam
Operating and Electrical	
Protection class IEC	Safety class II
Input Voltage	220 to 240 V
Line Frequency	50 to 60 Hz
Controls and Dimming	
Dimmable	Yes
Maximum dim level	1%
Mechanical and Housing	
Explosion hazard class	-
Housing Color	Black
Mech. impact protection code	IK03
Ingress protection code	IP20
Approval and Application	
Ambient temperature range	0 to +35 °C
CE mark	Yes
ENEC mark	ENEC mark
Flammability mark	For mounting on normally flammable surfaces
Glow-wire test	Temperature 650 °C, duration 30 s
Initial Performance (IEC Compliant)	
Luminous flux tolerance	+/-10%
Product Data	
Product family code	RC710B

Light Technical

		Correlated Color	Luminous Efficacy	
Order Code	Full Product Name	Temperature (Nom)	(rated) (Nom)	Luminous Flux
910505105755	RC710B 34S/830 PSED W5 L120 BK	3000 K	113 lm/W	3,400 lm
910505105758	RC710B 34S/830 SEIA IA4 W3 L120 BK	3000 K	110 lm/W	3,400 lm
910505105761	RC710B 34S/840 PSED W5 L120 BK	4000 K	113 lm/W	3,400 lm
910505105766	RC710B 34S/840 SEIA IA4 W3 L120 BK	4000 K	110 lm/W	3,400 lm
910505105753	RC710B 17S/830 PSED W5 L60 BK	3000 K	113 lm/W	1,700 lm
910505105759	RC710B 17S/840 PSED W5 L60 BK	4000 K	113 lm/W	1,700 lm
910505105757	RC710B 17S/830 SEIA IA4 W3 L60 BK	3000 K	113 lm/W	1,700 lm
910505105765	RC710B 17S/840 SEIA IA4 W3 L60 BK	4000 K	113 lm/W	1,700 lm
910505105756	RC710B 2X34S/830 PSED W5 L120 BK	3000 K	111 lm/W	3,400 lm
910505105762	RC710B 2X34S/840 PSED W5 L120 BK	4000 K	111 lm/W	3,400 lm
910505105754	RC710B 2X17S/830 PSED W5 L60 BK	3000 K	113 lm/W	1,700 lm
910505105760	RC710B 2X17S/840 PSED W5 L60 BK	4000 K	113 lm/W	1,700 lm
910505105763	RC710B 17S/840 PSD ELP3 W5 L60 BK	4000 K	89 lm/W	1,700 lm
910505105764	RC710B 34S/840 PSD ELP3 W5 L120 BK	4000 K	100 lm/W	3,400 lm

Operating and Electrical

		Power	Suitable for
Order Code	Full Product Name	Consumption	random switching
910505105755	RC710B 34S/830 PSED W5 L120 BK	30 W	Not applicable
910505105758	RC710B 34S/830 SEIA IA4 W3 L120 BK	30 W	Yes
910505105761	RC710B 34S/840 PSED W5 L120 BK	30 W	Not applicable
910505105766	RC710B 34S/840 SEIA IA4 W3 L120 BK	31 W	Yes
		Power	Suitable for
Order Code	Full Product Name	Consumption	random switching
910505105753	RC710B 17S/830 PSED W5 L60 BK	15 W	Not applicable
910505105759	RC710B 17S/840 PSED W5 L60 BK	15 W	Not applicable
910505105757	RC710B 17S/830 SEIA IA4 W3 L60 BK	15 W	Yes
910505105765	RC710B 17S/840 SEIA IA4 W3 L60 BK	15 W	Yes

Order Code	Full Product Name	Power Consumption	Suitable for random switching
910505105756	RC710B 2X34S/830 PSED W5 L120 BK	61 W	Not applicable
910505105762	RC710B 2X34S/840 PSED W5 L120 BK	61 W	Not applicable
910505105754	RC710B 2X17S/830 PSED W5 L60 BK	30 W	Not applicable

Controls and Dimming

Order Code	Full Product Name	Embedded control
910505105755	RC710B 34S/830 PSED W5 L120 BK	-
910505105758	RC710B 34S/830 SEIA IA4 W3 L120 BK	Upgradable sensor slot with SNS210 sensor
910505105761	RC710B 34S/840 PSED W5 L120 BK	-
910505105766	RC710B 34S/840 SEIA IA4 W3 L120 BK	Upgradable sensor slot with SNS210 sensor
910505105753	RC710B 17S/830 PSED W5 L60 BK	-
910505105759	RC710B 17S/840 PSED W5 L60 BK	-
910505105757	RC710B 17S/830 SEIA IA4 W3 L60 BK	Upgradable sensor slot with SNS210 sensor

Emergency Operation (1/2)

Order Code	Full Product Name	Central Emergency	Emergency lighting	Emergency flux	Type of emergency lighting battery
910505105755	RC710B 34S/830 PSED W5 L120 BK	Yes	-	-	-
910505105758	RC710B 34S/830 SEIA IA4 W3 L120 BK	Yes	-	-	-
910505105761	RC710B 34S/840 PSED W5 L120 BK	Yes	-	-	-
910505105766	RC710B 34S/840 SEIA IA4 W3 L120 BK	Yes	-	-	-
910505105753	RC710B 17S/830 PSED W5 L60 BK	Yes	-	-	-
910505105759	RC710B 17S/840 PSED W5 L60 BK	Yes	-	-	-

Order Code	Full Product Name	Power Consumption	Suitable for random switching
910505105760	RC710B 2X17S/840 PSED W5 L60 BK	30 W	Not applicable
910505105763	RC710B 17S/840 PSD ELP3 W5 L60 BK	19 W	Not applicable
910505105764	RC710B 34S/840 PSD ELP3 W5 L120 BK	30 W	Not applicable

Order Code	Full Product Name	Embedded control
910505105765	RC710B 17S/840 SEIA IA4 W3 L60 BK	Upgradable sensor slot with SNS210 sensor
910505105756	RC710B 2X34S/830 PSED W5 L120 BK	-
910505105762	RC710B 2X34S/840 PSED W5 L120 BK	-
910505105754	RC710B 2X17S/830 PSED W5 L60 BK	-
910505105760	RC710B 2X17S/840 PSED W5 L60 BK	-
910505105763	RC710B 17S/840 PSD ELP3 W5 L60 BK	-
910505105764	RC710B 34S/840 PSD ELP3 W5 L120 BK	-

Order Code	Full Product Name	Central Emergency	Emergency lighting	Emergency flux	Type of emergency lighting battery
910505105757	RC710B 17S/830 SEIA IA4 W3 L60 BK	Yes	-	-	-
910505105765	RC710B 17S/840 SEIA IA4 W3 L60 BK	Yes	-	-	-
910505105756	RC710B 2X34S/830 PSED W5 L120 BK	Yes	-	-	-
910505105762	RC710B 2X34S/840 PSED W5 L120 BK	Yes	-	-	-
910505105754	RC710B 2X17S/830 PSED W5 L60 BK	Yes	-	-	-
910505105760	RC710B 2X17S/840 PSED W5 L60 BK	Yes	-	-	-

					Type of emergency lighting battery
Order Code	Full Product Name	Central Emergency	Emergency lighting	Emergency flux	
910505105763	RC710B	No	Emergency lighting 3 hours duration Pro version	300 lm	Lithium
	17S/840 PSD				
	ELP3 W5 L60				
	BK				
910505105764	RC710B	No	Emergency lighting 3	300 lm	Lithium
	34S/840 PSD				

Emergency Operation (2/2)

Order Code	Full Product Name	Power consumption during Central DC emergency mode	Rated duration of the emergency lighting (when fully charged)
910505105755	RC710B 34S/830 PSED W5 L120 BK	-	-
910505105758	RC710B 34S/830 SEIA IA4 W3 L120 BK	-	-
910505105761	RC710B 34S/840 PSED W5 L120 BK	-	-
910505105766	RC710B 34S/840 SEIA IA4 W3 L120 BK	-	-
910505105753	RC710B 17S/830 PSED W5 L60 BK	-	-
910505105759	RC710B 17S/840 PSED W5 L60 BK	-	-
910505105757	RC710B 17S/830 SEIA IA4 W3 L60 BK	-	-

Initial Performance (IEC Compliant)

Order Code	Full Product Name	Initial chromaticity
910505105755	RC710B 34S/830 PSED W5 L120 BK	(0.43, 0.40) SDCM <3
910505105758	RC710B 34S/830 SEIA IA4 W3 L120 BK	(0.43, 0.40) SDCM <3
910505105761	RC710B 34S/840 PSED W5 L120 BK	(0.38, 0.38) SDCM <3
910505105766	RC710B 34S/840 SEIA IA4 W3 L120 BK	(0.38, 0.38) SDCM <3
910505105753	RC710B 17S/830 PSED W5 L60 BK	(0.43, 0.40) SDCM <3
910505105759	RC710B 17S/840 PSED W5 L60 BK	(0.38, 0.38) SDCM <3
910505105757	RC710B 17S/830 SEIA IA4 W3 L60 BK	(0.43, 0.40) SDCM <3

Order Code	Full Product Name	Central Emergency	Emergency lighting	Emergency flux	Type of emergency
					lighting battery
	ELP3 W5 L120		hours		
	BK		duration Pro		
			version		

Order Code	Full Product Name	Power consumption during Central DC emergency mode	Rated duration of the emergency lighting (when fully charged)
910505105765	RC710B 17S/840 SEIA IA4 W3 L60 BK	-	-
910505105756	RC710B 2X34S/830 PSED W5 L120 BK	-	-
910505105762	RC710B 2X34S/840 PSED W5 L120 BK	-	-
910505105754	RC710B 2X17S/830 PSED W5 L60 BK	-	-
910505105760	RC710B 2X17S/840 PSED W5 L60 BK	-	-
910505105763	RC710B 17S/840 PSD ELP3 W5 L60 BK	4 W	3 hour(s)
910505105764	RC710B 34S/840 PSD ELP3 W5 L120 BK	4 W	3 hour(s)

Order Code	Full Product Name	Initial chromaticity
910505105765	RC710B 17S/840 SEIA IA4 W3 L60 BK	(0.38, 0.38) SDCM <3
910505105756	RC710B 2X34S/830 PSED W5 L120 BK	(0.43, 0.40) SDCM <3
910505105762	RC710B 2X34S/840 PSED W5 L120 BK	(0.38, 0.38) SDCM <3
910505105754	RC710B 2X17S/830 PSED W5 L60 BK	(0.43, 0.40) SDCM <3
910505105760	RC710B 2X17S/840 PSED W5 L60 BK	(0.38, 0.38) SDCM <3
910505105763	RC710B 17S/840 PSD ELP3 W5 L60 BK	(0.38, 0.38) SDCM <3
910505105764	RC710B 34S/840 PSD ELP3 W5 L120 BK	(0.38, 0.38) SDCM <3

