



DALI Square Track – flexibility enabling energy savings

DALI Square Track

Designed for use with DALI projectors with a dedicated adaptor, the DALI Square Track is ideal for users who want lighting flexibility to create a specific ambience in their shop and to reduce energy consumption. The system is made up of a solid aluminum track, which is available in various lengths and with a choice of electrical conductors. Any given configuration can be easily created – horizontal or vertical, mounted on or in the ceiling, on the wall or on free-standing panels. The system can also be used as a floating structure. All luminaires have a separate power supply and can be switched selectively. They can easily be moved to alter the lighting and presentation. In this way, a multifunctional track system can be created for accent lighting as well as for suspending advertising and decorative material.

Benefits

- Allows flexible light settings
- Enables energy savings
- Unobtrusive smart track

Features

- Integration of the DALI protocol within an unobtrusive retail spot track widely used for dimming and control
- Can be used with all Philips LED 3C track spots
- Available in lengths of 1, 2, 3 and 4 m
- Seven electrical conductors: L1/L2/L3/neutral/ground 16A/400V, IP20 + DA/DA 2x1A/50V FELV AC (DALI)
- Available in three finishes – white, black, aluminum
- Range of adaptors, power supply connections and mounting accessories available

DALI Square Track

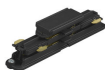
Application

- Accent lighting in retail outlets, shopping malls, museums
- All indoor architectural lighting applications

Versions



ZCS750 5C6 EPS BK

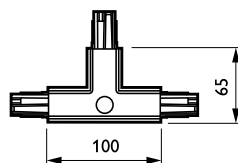
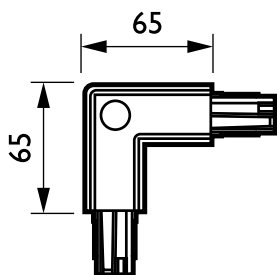
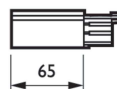
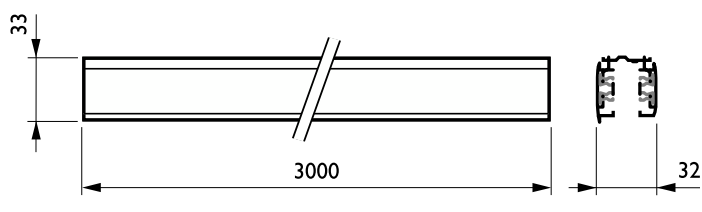


ZCS750 5C6 IPC BK (XTSC621-2)



RCS750 track, black

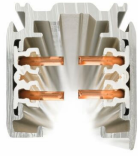
Dimensional drawing



DALI Square Track

Product details

IPDP_RCS750i_0001-Detail photo



Mechanical and Housing

Accessory color Black

Approval and Application

CE mark Yes

CE mark Yes

Operating and Electrical

Order Code	Full Product Name	Protection class	Protection class
		IEC	IEC
910502500066	ZCS750 5C6 EPSR BK (XTSC611-2)	-	-
910502500069	ZCS750 5C6 EPSL BK (XTSC612-2)	-	-
910502500078	ZCS750 5C6 CCPI BK (XTSC634-2)	-	-
910502500081	ZCS750 5C6 CCPE BK (XTSC635-2)	-	-
910502500075	ZCS750 5C6 IPC BK (XTSC621-2)	-	-

Order Code	Full Product Name	Protection class	Protection class
		IEC	IEC
910502500090	ZCS750 5C6 TCPLE BK (XTSC639-2)	-	-
910502500093	ZCS750 5C6 TCPRI BK (XTSC640-2)	-	-
910502500045	RCS750 5C6 L3000 BK (XTSC6300-2)	Safety class I	Safety class I

Mechanical and Housing

Order Code	Full Product Name	Ingress	Ingress
		protection code	protection code
910502500066	ZCS750 5C6 EPSR BK (XTSC611-2)	-	-
910502500069	ZCS750 5C6 EPSL BK (XTSC612-2)	-	-
910502500078	ZCS750 5C6 CCPI BK (XTSC634-2)	-	-
910502500081	ZCS750 5C6 CCPE BK (XTSC635-2)	-	-
910502500075	ZCS750 5C6 IPC BK (XTSC621-2)	-	-

Order Code	Full Product Name	Ingress	Ingress
		protection code	protection code
910502500090	ZCS750 5C6 TCPLE BK (XTSC639-2)	-	-
910502500093	ZCS750 5C6 TCPRI BK (XTSC640-2)	-	-
910502500045	RCS750 5C6 L3000 BK (XTSC6300-2)	IP30	IP30

Approval and Application

Order Code	Full Product Name	Glow-wire test	Glow-wire test
910502500066	ZCS750 5C6 EPSR BK (XTSC611-2)	-	-
910502500069	ZCS750 5C6 EPSL BK (XTSC612-2)	-	-
910502500078	ZCS750 5C6 CCPI BK (XTSC634-2)	-	-

Order Code	Full Product Name	Glow-wire test	Glow-wire test
910502500081	ZCS750 5C6 CCPE BK (XTSC635-2)	-	-
910502500075	ZCS750 5C6 IPC BK (XTSC621-2)	-	-
910502500090	ZCS750 5C6 TCPLE BK (XTSC639-2)	-	-

DALI Square Track

Order Code	Full Product Name	Glow-wire test	Glow-wire test
910502500093	ZCS750 5C6 TCPRI BK (XTSC640-2)	-	-

Order Code	Full Product Name	Glow-wire test	Glow-wire test
910502500045	RCS750 5C6 L3000 BK (XTSC6300-2)	Temperature 850 °C, duration 5 s	Temperature 850 °C, duration 5 s

