



CoreLine Surface-mounted – the clear choice for LED

CoreLine surface-mounted

Whether for a new building or renovation of an existing space, customers want lighting solutions that provide quality of light and substantial energy and maintenance savings. The new CoreLine Surface-mounted range of LED products can be used to replace functional luminaires in general lighting applications. The process of selecting, installing and maintaining is so easy – it's a simple switch.

Benefits

- Enables a simple switch from basic conventional luminaires to LED luminaires
- Energy saving of up to 45% compared to functional TL-D luminaires
- Slim design with a height of less than 40 mm

Features

- Integrated LED technology
- Slim housing
- Suspension set available as an accessory
- Recessed version also available for use in grid ceilings

Application

- General lighting

Warnings and Safety

- The product is IPX0 & as such is not protected against water ingress & as such we strongly recommend that The environment in which The luminaire is to be installed is suitably checked
- If the above advice is not taken and the luminaires are subject to water ingress, Philips / Signify cannot guarantee safe failure & product warranty will become void

CoreLine surface-mounted

Versions



SM136V 31S_37S_43S_840 PSU
W20L150 OC_SPP



SM136V 31S_37S_43S_840 PSU
W20L120 NOC_SPP



SM136V 28S_34S_40S_830 PSU
W20L120 NOC_SPP



SM136V 31S_37S_43S_840 PSD
W20L150 OC_SPP



SM136V 31S_37S_43S_840 PSD
W20L120 OC_SPP



SM136V 31S_37S_43S_840 PSU
W20L120 OC_SPP



SM136V 28S_34S_40S_830 PSU
W20L150 NOC_SPP



SM136V 31S_37S_43S_840 PSU
W20L150 NOC_SPP



SM136V 28S_34S_40S_830 PSD
W20L150 OC_SPP



SM136V 31S_37S_43S_840 PSD
W20L120 NOC_SPP

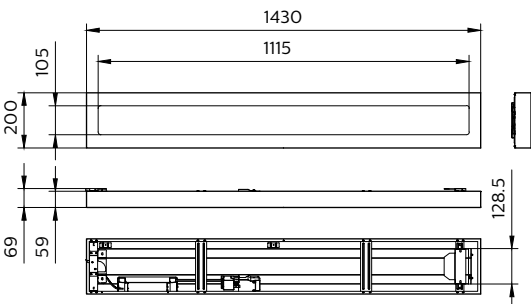
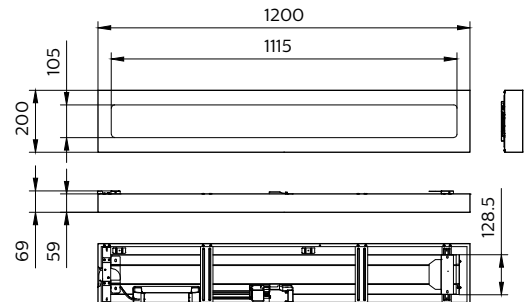
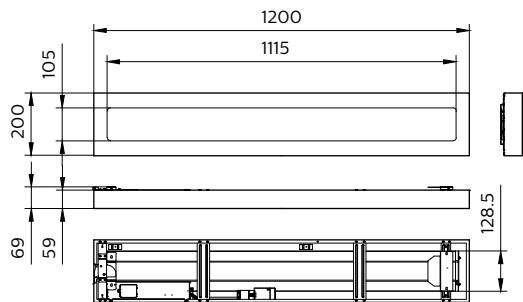
CoreLine surface-mounted

Versions

SM136V 28S_34S_40S_830 PSD
W20L120 OC_SPP

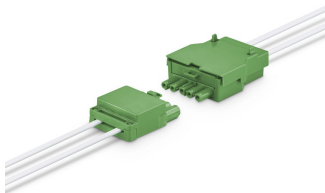


Dimensional drawing



Product details

CoreLine Recessed connector PSD
(dali)



CoreLine Surface-mounted
Mounting clip

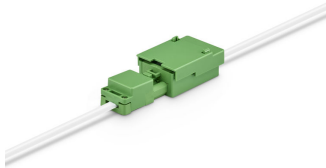


CoreLine surface-mounted

Product details



CoreLine Recessed connector PSU
(On/Off))



CoreLine Recessed connector PSU
(On/Off))



CoreLine Surface-mounted
Mounting clip



CoreLine_Surface-mounted-
SM136V_20x120



CoreLine Surface-mounted
backside with PSD (Dali) driver
and connector



CoreLine Surface-mounted edge



CoreLine_Surface-mounted-
SM136V_20x150



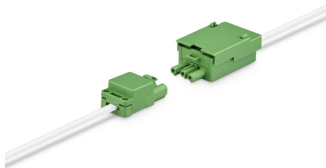
CoreLine Surface-mounted
Backside PSD (dali) driver 20x120

CoreLine surface-mounted

Product details



CoreLine Surface-mounted
Mounting bracket



CoreLine Recessed connector PSU
(On/Off)



CoreLine Surface-mounted PSU
(On/OFF) driver



CoreLine Surface-mounted
Backside PSU (On/Off) driver
20x150

CoreLine surface-mounted

General Information	
Driver included	Yes
Light source replaceable	No
Number of gear units	1 unit
Service tag	Yes
Light Technical	
All-in Type	All-in, Multi Lumen
Color rendering index (CRI)	>80
Operating and Electrical	
Input Voltage	220-240 V
Line Frequency	50 or 60 Hz
Power Consumption	31 W
Suitable for random switching	Yes
Mechanical and Housing	
Housing Color	White
Mech. impact protection code	IK03
Ingress protection code	IP20/44
Approval and Application	
Ambient temperature range	-10 to +40 °C
CE mark	Yes
ENEC mark	ENEC mark
Flammability mark	For mounting on normally flammable surfaces
Glow-wire test	Temperature 650 °C, duration 30 s
Flickering value (PstLM) - Flickering value as per EN 61000-3-3	1
Stroboscopic effect visibility measure (SVM)	0.4
Initial Performance (IEC Compliant)	
Luminous flux tolerance	+/-10%

Light Technical

Order Code	Full Product Name	Correlated Color Temperature (Nom)	Luminous Efficacy (rated)		Optic type
		(Nom)	(Nom)	Luminous Flux	
51238200	SM136V 31S_37S_43S/840 PSU W20L150 OC	4000 K	140 lm/W	3,100 lm	Beam angle 84°
51231300	SM136V 31S_37S_43S/840 PSU W20L120 NOC	4000 K	140 lm/W	3,100 lm	Beam angle 100°
51230600	SM136V 28S_34S_40S/830 PSU W20L120 NOC	3000 K	130 lm/W	2,800 lm	Beam angle 100°
51240500	SM136V 31S_37S_43S/840 PSD W20L150 OC	4000 K	140 lm/W	3,100 lm	Beam angle 84°
51235100	SM136V 31S_37S_43S/840 PSD W20L120 OC	4000 K	140 lm/W	3,100 lm	Beam angle 84°
51232000	SM136V 31S_37S_43S/840 PSU W20L120 OC	4000 K	140 lm/W	3,100 lm	Beam angle 84°
51236800	SM136V 28S_34S_40S/830 PSU W20L150 NOC	3000 K	130 lm/W	2,800 lm	Beam angle 100°
51237500	SM136V 31S_37S_43S/840 PSU W20L150 NOC	4000 K	140 lm/W	3,100 lm	Beam angle 100°
51239900	SM136V 28S_34S_40S/830 PSD W20L150 OC	3000 K	130 lm/W	2,800 lm	Beam angle 84°
51233700	SM136V 31S_37S_43S/840 PSD W20L120 NOC	4000 K	140 lm/W	3,100 lm	Beam angle 100°
51234400	SM136V 28S_34S_40S/830 PSD W20L120 OC	3000 K	130 lm/W	2,800 lm	Beam angle 84°

Operating and Electrical

Order Code	Full Product Name	Protection class IEC
51238200	SM136V 31S_37S_43S/840 PSU W20L150 OC	Safety class I
51231300	SM136V 31S_37S_43S/840 PSU W20L120 NOC	Safety class I
51230600	SM136V 28S_34S_40S/830 PSU W20L120 NOC	Safety class I
51240500	SM136V 31S_37S_43S/840 PSD W20L150 OC	Safety class II
51235100	SM136V 31S_37S_43S/840 PSD W20L120 OC	Safety class II
51232000	SM136V 31S_37S_43S/840 PSU W20L120 OC	Safety class I

Order Code	Full Product Name	Protection class IEC
51236800	SM136V 28S_34S_40S/830 PSU W20L150 NOC	Safety class I
51237500	SM136V 31S_37S_43S/840 PSU W20L150 NOC	Safety class I
51239900	SM136V 28S_34S_40S/830 PSD W20L150 OC	Safety class II
51233700	SM136V 31S_37S_43S/840 PSD W20L120 NOC	Safety class II
51234400	SM136V 28S_34S_40S/830 PSD W20L120 OC	Safety class II

Controls and Dimming

CoreLine surface-mounted

Order Code	Full Product Name	Maximum dim	
		Dimmable	level
51238200	SM136V 31S_37S_43S/840 PSU W20L150 OC	No	–
51231300	SM136V 31S_37S_43S/840 PSU W20L120 NOC	No	–
51230600	SM136V 28S_34S_40S/830 PSU W20L120 NOC	No	–
51240500	SM136V 31S_37S_43S/840 PSD W20L150 OC	Yes	3%
51235100	SM136V 31S_37S_43S/840 PSD W20L120 OC	Yes	3%
51232000	SM136V 31S_37S_43S/840 PSU W20L120 OC	No	–
51236800	SM136V 28S_34S_40S/830 PSU W20L150 NOC	No	–

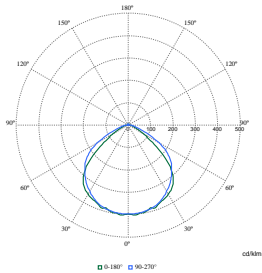
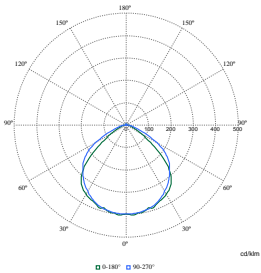
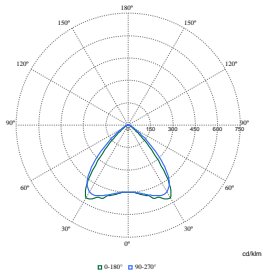
Order Code	Full Product Name	Maximum dim	
		Dimmable	level
51237500	SM136V 31S_37S_43S/840 PSU W20L150 NOC	No	–
51239900	SM136V 28S_34S_40S/830 PSD W20L150 OC	Yes	3%
51233700	SM136V 31S_37S_43S/840 PSD W20L120 NOC	Yes	3%
51234400	SM136V 28S_34S_40S/830 PSD W20L120 OC	Yes	3%

Initial Performance (IEC Compliant)

Order Code	Full Product Name	Initial chromaticity
51238200	SM136V 31S_37S_43S/840 PSU W20L150 OC	(0.38, 0.38) SDCM ≤3
51231300	SM136V 31S_37S_43S/840 PSU W20L120 NOC	(0.38, 0.38) SDCM ≤3
51230600	SM136V 28S_34S_40S/830 PSU W20L120 NOC	(0.43, 0.40) SDCM ≤3
51240500	SM136V 31S_37S_43S/840 PSD W20L150 OC	(0.38, 0.38) SDCM ≤3
51235100	SM136V 31S_37S_43S/840 PSD W20L120 OC	(0.38, 0.38) SDCM ≤3
51232000	SM136V 31S_37S_43S/840 PSU W20L120 OC	(0.38, 0.38) SDCM ≤3

Order Code	Full Product Name	Initial chromaticity
51236800	SM136V 28S_34S_40S/830 PSU W20L150 NOC	(0.43, 0.40) SDCM ≤3
51237500	SM136V 31S_37S_43S/840 PSU W20L150 NOC	(0.38, 0.38) SDCM ≤3
51239900	SM136V 28S_34S_40S/830 PSD W20L150 OC	(0.43, 0.40) SDCM ≤3
51233700	SM136V 31S_37S_43S/840 PSD W20L120 NOC	(0.38, 0.38) SDCM ≤3
51234400	SM136V 28S_34S_40S/830 PSD W20L120 OC	(0.43, 0.40) SDCM ≤3

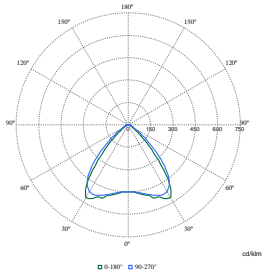
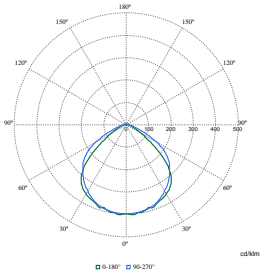
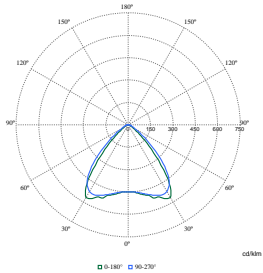
Polar Wide Diagrams



Polar Normal (separate) - null - 911401882181

Polar Normal (separate) - null - 911401881681

Polar Normal (separate) - null - 911401881781



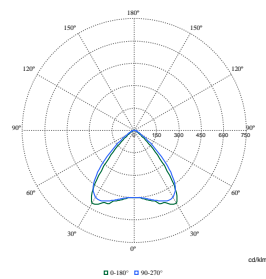
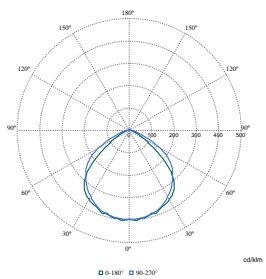
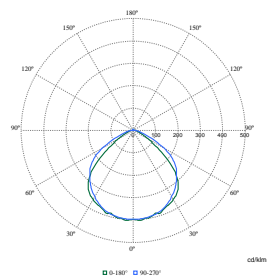
Polar Normal (separate) - null - 911401881881

Polar Normal (separate) - null - 911401881981

Polar Normal (separate) - null - 911401882081

CoreLine surface-mounted

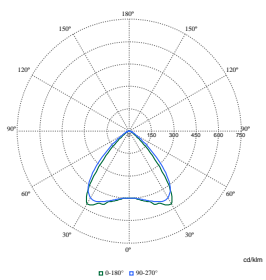
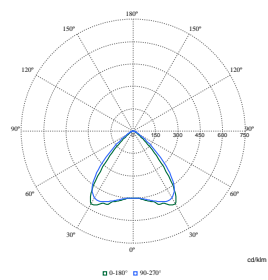
Polar Wide Diagrams



Polar Normal (separate) - null - 911401882281

Polar Normal (separate) - null - 911401882381

Polar Normal (separate) - null - 911401882581



Polar Normal (separate) - null - 911401882681

Polar Normal (separate) - null - 911401882481

