



Philips CoreLine surface-mounted: easy installation, excellent illumination

CoreLine surface-mounted

Philips CoreLine surface-mounted light fixtures deliver on the CoreLine promise of innovative, easy-to-use, high-quality luminaires. These high-quality LEDs are designed to replace existing surface-mounted luminaires with T8 or T5 technology. This CoreLine family also features an innovative new choice of multiple lumen outputs in one single luminaire, called MultiLumen. Instant energy savings and a longer lifetime make this an environmentally friendly and cost-saving surface LED light solution. With a quick-connector feature, our SM136V surface-mounted luminaires are quick and easy to install. Also available within the range are Interact Ready luminaires with integrated wireless communications, which are fully compatible with Interact gateways, sensors and software.

Benefits

- MultiLumen: the choice of different lumen outputs in one single luminaire
- The new connector offers quick and simple installation
- Energy savings and longer lifetime to reduce operating costs

CoreLine surface-mounted

Features

- MultiLumen: different lumen outputs ranging from 2,800 lumen to 4,300 lumen in one single luminaire
- Easy connector for faster installation: quick connector or Wieland connector
- Energy-efficient and long lifetime: up to 140 lm/W and 50,000 hours @L80 lifetime
- Many flicker-free drivers available: on/off (PSU), dimming (Dali) and integrated wireless connectivity (Interact Ready)
- Office-compliant versions (OC) and non-office-compliant versions (NOC)
- High lumen available: up to 6,000 lm (OC)
- Optional versions available: Emergency Lighting (EL) & Wieland connectors (W)

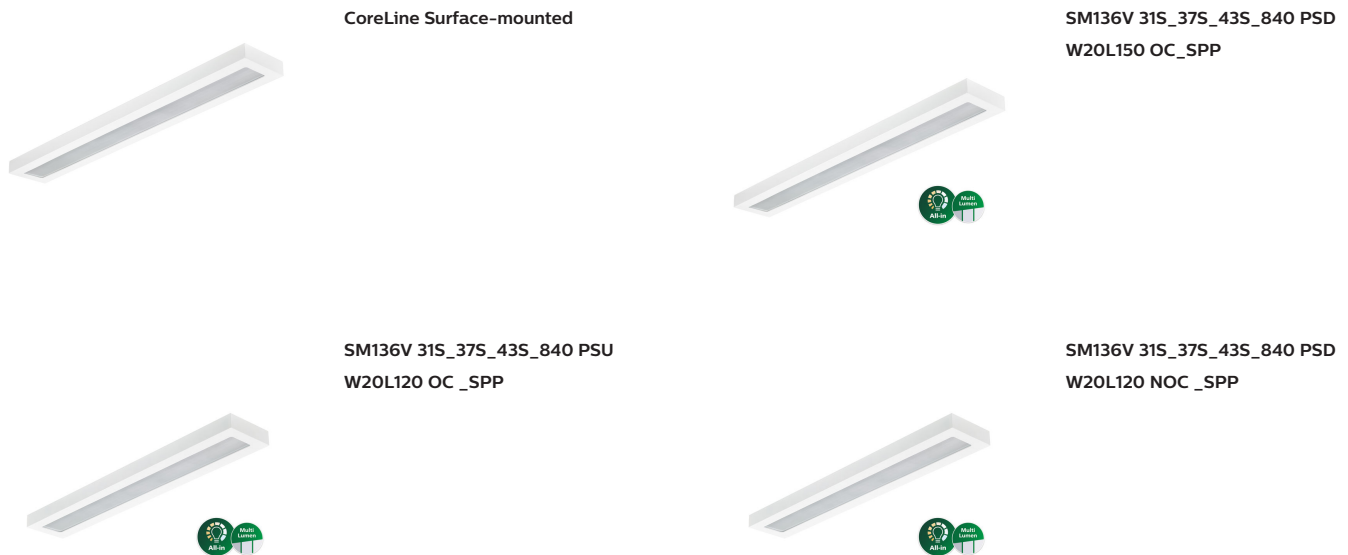
Application

- Offices
- Healthcare
- Education

Warnings and Safety

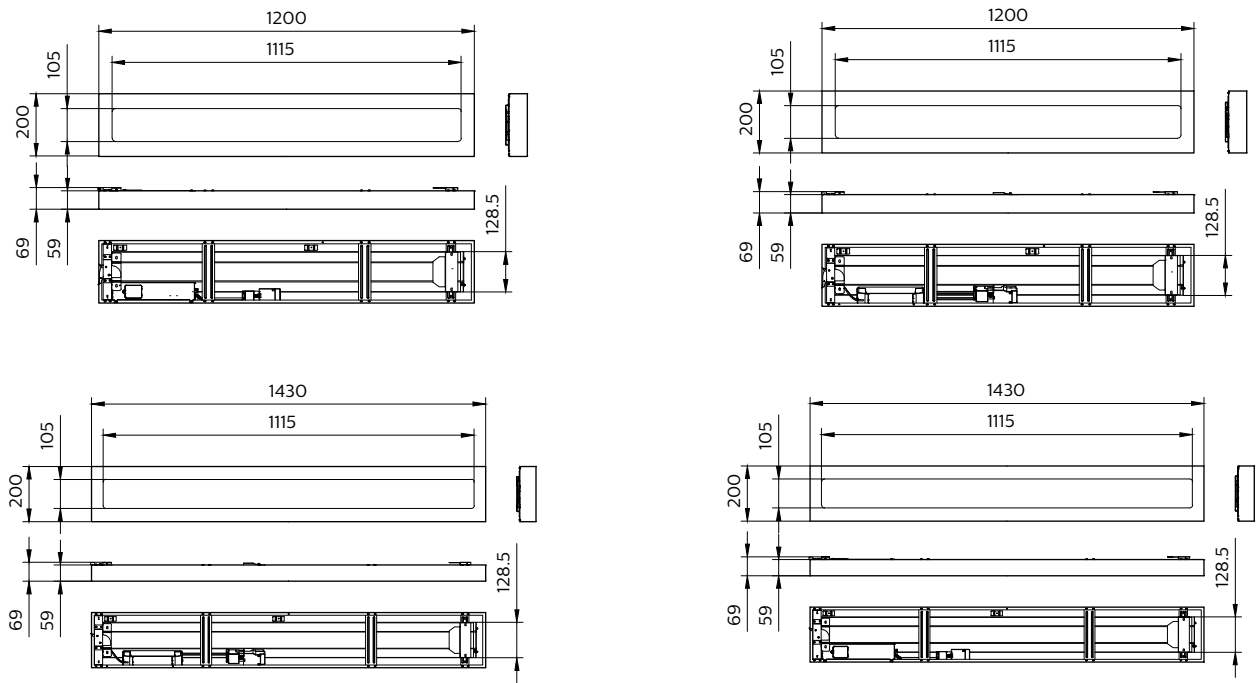
- The product is IPX0 and as such is not protected against water ingress, so we strongly recommend that the environment in which the luminaire is to be installed is suitably checked
- If the above advice is not taken and the luminaires are subject to water ingress, Philips/Signify cannot guarantee safe failure and product warranty will become void

Versions

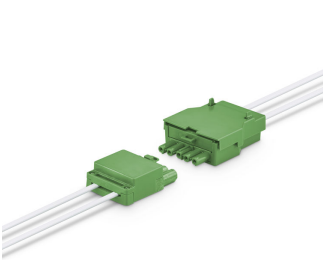


CoreLine surface-mounted

Dimensional drawing



Product details



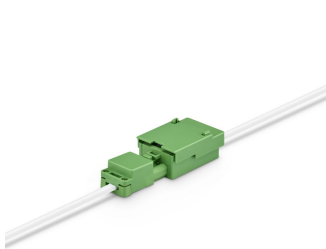
CoreLine Recessed connector PSD
(dali)



CoreLine Surface-mounted
Mounting clip



CoreLine Recessed connector PSU
(On/Off)



CoreLine Recessed connector PSU
(On/Off)

CoreLine surface-mounted

Product details



CoreLine Surface-mounted
Mounting clip



CoreLine_Surface-mounted-
SM136V_20x120



CoreLine Surface-mounted
backside with PSD (Dali) driver
and connector



CoreLine Surface-mounted edge



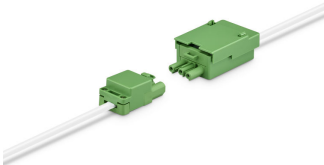
CoreLine_Surface-mounted-
SM136V_20x150



CoreLine Surface-mounted
Backside PSD (dali) driver 20x120



CoreLine Surface-mounted
Mounting bracket



CoreLine Recessed connector PSU
(On/Off))

CoreLine surface-mounted

Product details



CoreLine Surface-mounted PSU
(On/OFF) driver

General Information

Driver included	Yes
Light source replaceable	No
Number of gear units	Unit
Service Tag	Yes

Light Technical

Correlated Colour Temperature (Nom)	4000 K
Colour rendering index (CRI)	>80
Luminous efficacy (rated) (nom.)	140 lm/W

Operating and Electrical

Input Voltage	220-240 V
Line Frequency	50 or 60 Hz
Power Consumption	31 W
Suitable for random switching	Yes

Mechanical and Housing

Housing Colour	White
Mech. impact protection code	IK03
Ingress protection code	IP20/44

Approval and Application

Ambient temperature range	-10 to +40 °C
CE mark	Yes
ENEC mark	ENEC mark
Flammability mark	For mounting on normally flammable surfaces
Glow-wire test	Temperature 650 °C, duration 30 s
Flickering value (PstLM)	1
Stroboscopic effect	0.4

Initial Performance (IEC Compliant)

Initial chromaticity	(0.38, 0.38) SDCM ≤3
Luminous flux tolerance	+/-10%

Light Technical

Order Code	Full Product Name	All-in Type	Luminous Flux	Optic type
911401897181	SM136V 43S/840 WIA W20L150 OC	-	4,300 lm	Beam angle 84°
911401882681	SM136V 31S_37S_43S/840 PSD W20L150 OC	All-in, Multi Lumen	3,100 lm	Beam angle 84°
911401881881	SM136V 31S_37S_43S/840 PSU W20L120 OC	All-in, Multi Lumen	3,100 lm	Beam angle 84°
911401881981	SM136V 31S_37S_43S/840 PSD W20L120 NOC	All-in, Multi Lumen	3,100 lm	Beam angle 100°

CoreLine surface-mounted

Operating and Electrical

Order Code	Full Product Name	Protection class IEC
911401897181	SM136V 43S/840 WIA W20L150 OC	Safety class II
911401882681	SM136V 31S_37S_43S/840 PSD W20L150 OC	Safety class II

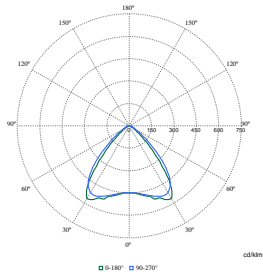
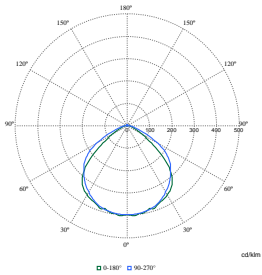
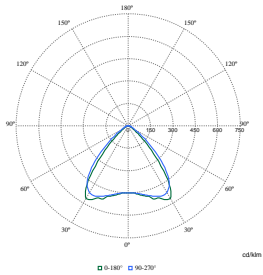
Order Code	Full Product Name	Protection class IEC
911401881881	SM136V 31S_37S_43S/840 PSU W20L120 OC	Safety class I
911401881981	SM136V 31S_37S_43S/840 PSD W20L120 NOC	Safety class II

Controls and Dimming

Order Code	Full Product Name	Dimmable	Maximum dim level
911401897181	SM136V 43S/840 WIA W20L150 OC	Yes	1%
911401882681	SM136V 31S_37S_43S/840 PSD W20L150 OC	Yes	3%
911401881881	SM136V 31S_37S_43S/840 PSU W20L120 OC	No	-

Order Code	Full Product Name	Dimmable	Maximum dim level
911401881981	SM136V 31S_37S_43S/840 PSD W20L120 NOC	Yes	3%

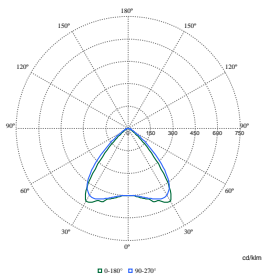
Polar Wide Diagrams



Polar Normal (separate) - null - 911401881881

Polar Normal (separate) - null - 911401881981

Polar Normal (separate) - null - 911401882681



Polar Normal (separate) - null - 911401897181

CoreLine surface-mounted

