



Philips CoreLine surface-mounted gen4: easy installation, excellent illumination

CoreLine surface mounted gen 4

Introducing Philips CoreLine surface-mounted gen4, a family of high-quality and innovative light fixtures designed to deliver energy-efficient and long-lasting illumination for your home or office. With higher lumen packages up to 6800 lm, improved efficiency of up to 160 lm/W and a longer lifetime of L90@50K hrs/ L80@100K hrs, our CoreLine family provides bright and long-lasting illumination. Our surface-mounted light fixtures feature DC plugs in all versions, packaging from a single box to 4-in-1 and plastics-free packaging, making them eco-friendly and cost-effective. Our CoreLine surface-mounted gen4 features the same green quick connectors as the CoreLine panel and is compatible with Wieland GSTi3 and GST/5 connectors. Upgrade your lighting today with Philips CoreLine surface-mounted gen4, a high-quality and innovative solution that delivers on the Philips promise of energy-efficient and long-lasting illumination.

CoreLine surface mounted gen 4

Benefits

- Energy-efficient: Our state-of-the-art LED technology ensures that CoreLine surface-mounted gen4 is both eco-friendly and cost-effective, saving you money on your energy bills while helping to reduce your carbon footprint.
- Bright and effective: With higher lumen packages up to 6800 lm, CoreLine surface-mounted gen4 provides bright and effective illumination for your home or office.
- Easy installation: Quick connectors make installation a breeze, ensuring a hassle-free and user-friendly experience.
- Modern design: With its sleek and modern design, CoreLine surface-mounted gen4 blends seamlessly with any interior décor, enhancing the atmosphere of any space.
- Long-lasting: Improved efficiency and lifetime ensure long-lasting and eco-friendly lighting that will last for years to come.

Features

- Higher lumen packages: up to 6800 lm (replacing 2 x 58W conventional light sources) for bright and effective illumination
- Improved efficiency: up to 160 lm/W for energy-saving and eco-friendly lighting
- Improved lifetime: L90@50K hrs/ L80@100K hrs for long-lasting and durable lighting
- Plastics-free packaging for an eco-friendly solution
- EPDs available for all listed products
- Improved all-in driver: more user-friendly, with no dipswitches for ease of use

Application

- Offices
- Healthcare
- Education

Versions

CoreLine surface mounted G4
W20L120



CoreLine surface mounted G4
W20L157



CoreLine surface mounted G4
W20L120 All-in

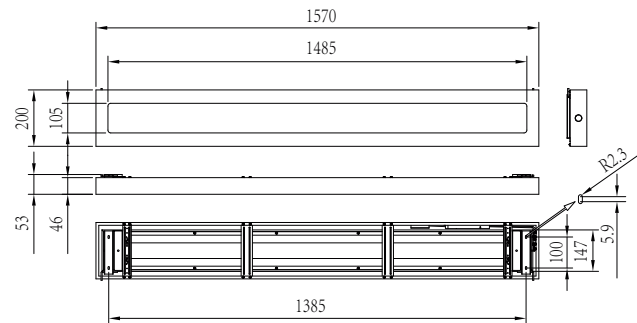
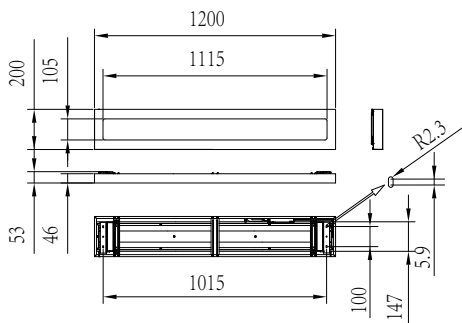


CoreLine surface mounted G4
W20L157 All-in



CoreLine surface mounted gen 4

Dimensional drawing



Product details

CoreLine surface mounted G4
W20L120 DPP



CoreLine surface mounted G4 PSU
back side



CoreLine surface mounted G4
SafetyCable



CoreLine surface mounted G4 WIA
back side-02



CoreLine surface mounted G4 OC
Optical window



CoreLine surface mounted G4 PSU
back side



CoreLine G4 PSU All in lumen
selectable side

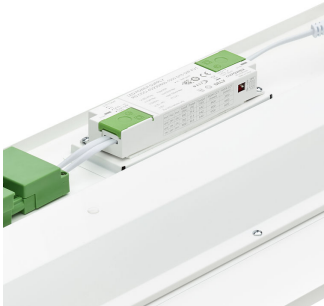


CoreLine surface mounted gen 4

Product details



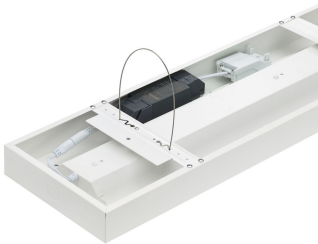
CoreLine surface mounted G4
W20L157 DPP



CoreLine surface mounted G4 PSD
back side detail dipswitches



CoreLine G4 PSD All in lumen
selectable back



CoreLine surface mounted G4 WIA
back side-01



CoreLine surface mounted G4 WIA
back side



CoreLine G4 PSU All in lumen
selectable back



CoreLine G4 PSD All in lumen
selectable side

CoreLine surface mounted gen 4

| General Information | |
|-------------------------------------|---|
| Driver included | Yes |
| Number of gear units | Unit |
| Light Technical | |
| Correlated Colour Temperature (Nom) | 4000 K |
| Colour rendering index (CRI) | 80 |
| Optic type | Wide beam office-compliant |
| Operating and Electrical | |
| Protection class IEC | Safety class II |
| Input Voltage | 220-240 V |
| Line Frequency | 50 or 60 Hz |
| Suitable for random switching | No |
| Mechanical and Housing | |
| Housing Colour | White RAL 9003 |
| Mech. impact protection code | IK03 |
| Ingress protection code | IP20/44 |
| Approval and Application | |
| Ambient temperature range | -10 to +40 °C |
| CE mark | Yes |
| ENEC mark | KEMA Netherlands |
| Flammability mark | For mounting on normally flammable surfaces |
| Glow-wire test | Temperature 650 °C, duration 30 s |
| Initial Performance (IEC Compliant) | |
| Initial chromaticity | (0.38.0.38)SDCM<3 |
| Luminous flux tolerance | +/-10% |

Light Technical

| Order Code | Full Product Name | All-in Type | Luminous efficacy | |
|------------|--|---------------------|-------------------|---------------|
| | | | (rated) (nom.) | Luminous Flux |
| 76426299 | SM136V G4 43S/840 WIA W20L120 OC | - | 156 lm/W | 4,300 lm |
| 76432399 | SM136V G4 43S/840 WIA W20L157 OC | - | 156 lm/W | 4,300 lm |
| 76422499 | SM136V G4 36_45_60S/840 PSU W20L120 OC | All-in, Multi Lumen | 157 lm/W | 3,600 lm |
| 76424899 | SM136V G4 36_45_60S/840 PSD W20L120 OC | All-in, Multi Lumen | 157 lm/W | 3,600 lm |
| 76427999 | SM136V G4 36_45_68S/840 PSU W20L157 OC | All-in, Multi Lumen | 160 lm/W | 3,600 lm |
| 76429399 | SM136V G4 36_45_68S/840 PSD W20L157 OC | All-in, Multi Lumen | 160 lm/W | 3,600 lm |

Operating and Electrical

| Order Code | Full Product Name | Power Consumption |
|------------|--|-------------------|
| 76426299 | SM136V G4 43S/840 WIA W20L120 OC | 27.5 W |
| 76432399 | SM136V G4 43S/840 WIA W20L157 OC | 27.5 W |
| 76422499 | SM136V G4 36_45_60S/840 PSU W20L120 OC | 38.5 W |

| Order Code | Full Product Name | Power Consumption |
|------------|--|-------------------|
| 76424899 | SM136V G4 36_45_60S/840 PSD W20L120 OC | 38.5 W |
| 76427999 | SM136V G4 36_45_68S/840 PSU W20L157 OC | 43.5 W |
| 76429399 | SM136V G4 36_45_68S/840 PSD W20L157 OC | 43.5 W |

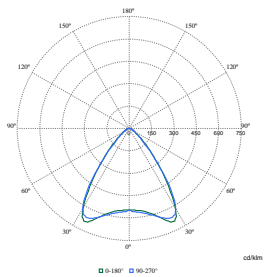
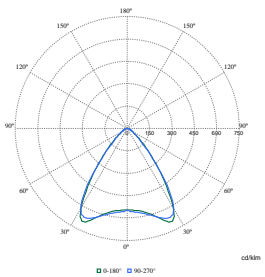
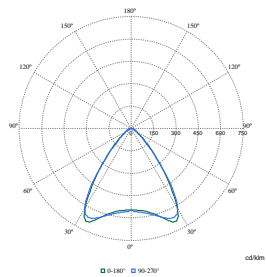
Controls and Dimming

| Order Code | Full Product Name | Dimmable |
|------------|--|----------|
| 76426299 | SM136V G4 43S/840 WIA W20L120 OC | Yes |
| 76432399 | SM136V G4 43S/840 WIA W20L157 OC | Yes |
| 76422499 | SM136V G4 36_45_60S/840 PSU W20L120 OC | No |

| Order Code | Full Product Name | Dimmable |
|------------|--|----------|
| 76424899 | SM136V G4 36_45_60S/840 PSD W20L120 OC | Yes |
| 76427999 | SM136V G4 36_45_68S/840 PSU W20L157 OC | No |
| 76429399 | SM136V G4 36_45_68S/840 PSD W20L157 OC | Yes |

CoreLine surface mounted gen 4

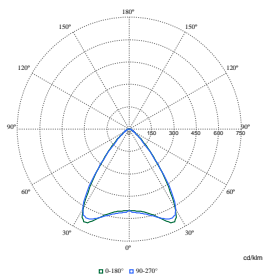
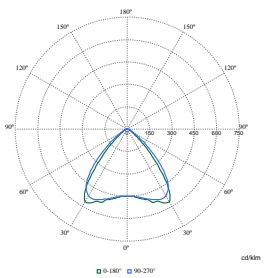
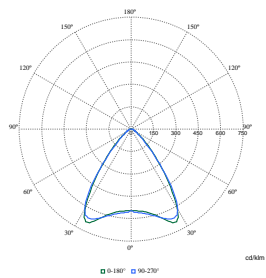
Polar Wide Diagrams



Polar Normal (separate) - null - 911401842487

Polar Normal (separate) - null - 911401842787

Polar Normal (separate) - null - 911401841987



Polar Normal (separate) - null - 911401841787

Polar Normal (separate) - null - 911401842187

Polar Normal (separate) - null - 911401842287

