



FlexBlend heading the way to efficient and flexible furnished offices areas

FlexBlend, Surface Mounted

Philips FlexBlend is an attractive family of surface mounted and suspended luminaires, next to Flexblend recessed. The luminaire range is enabling building owners to advance their lighting operations, by offering office-compliant lighting with a return on investment of less than 3 years. FlexBlend provides the required flexibility through the adaptability in design. This gives the possibility to install the luminaires easily in the field, at any moment. Even when today's luminaire is suspended, tomorrow this can be adapted to a surface mounted installation at the venue. And the other way around. . The surface mounted and suspended luminaire range fit to many different office spaces like open plan office, corridors, reception or meeting rooms. FlexBlend is offered in both lines and as standalone, using the same lighting module. This gives the option to the users to use FlexBlend as standalone now, and tomorrow, as line. The controller is integrated in the luminaire. As technology is changing fast, the ideal lighting solution is also expected to be ready to incorporate innovations that can help optimize operations further. For this reason, FlexBlend holds all connectivity and future ready options available. As System Ready luminaire it can be paired with lighting management systems such as the Philips Interact Office wired (PoE) and Interact Office wireless and/or existing and upcoming sensor innovations. The luminaire range is therefore future ready and can be delivered without any system component, and in a next phase, in the field to be upgraded. An attractive opportunity for new installations and renovations.

FlexBlend, Surface Mounted

Benefits

- Return of investment less than 3 years
- A flexible office, with application flexibility to the choice of luminaires to fit many office areas
- Future ready: scalable and ready to be connected to controls and lighting systems

Features

- Fully office compliant (UGR <19, L65 < 3000cd/sm), light level according to office applications requirements
- Homogenous and uniform light effect
- Various mounting options, dimensional variety and local options
- Integrated sensors
- Ready to be connected to software based lighting systems such as Interact Office

Application

- Offices
- Education
- Healthcare

Warnings and Safety

- The product is IPX0 & as such is not protected against water ingress & as such we strongly recommend that The environment in which The luminaire is to be installed is suitably checked
- If The above advice is not taken and The luminaires are subject to water ingress, Philips / Signify cannot guarantee safe failure & product warranty will become void

Versions



FlexBlend Surface Mounted
SM340C O WH



FlexBlend Surface Mounted
SM340C PCS SI



FlexBlend Surface Mounted
SM340C MLO SI

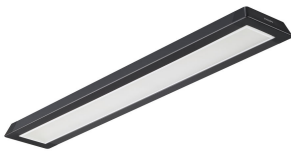


FlexBlend Surface Mounted
SM340C MLO BK

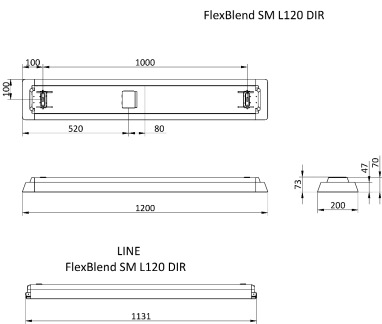
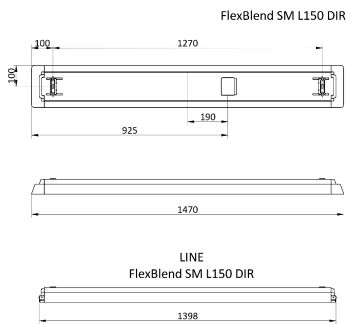
FlexBlend, Surface Mounted

Versions

FlexBlend Surface Mounted
SM340C PCS BK



Dimensional drawing



Product details

FlexBlend Surface Mounted
SM340C WH



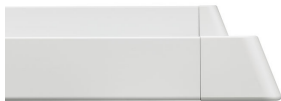
FlexBlend Surface Mounted
SM340C PCS BK



FlexBlend Surface Mounted
SM340C SI



FlexBlend Surface Mounted
SM340C WH



FlexBlend, Surface Mounted

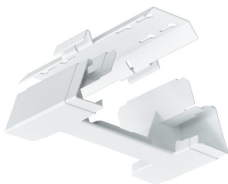
Product details



FlexBlend Surface Mounted
SM340C BK



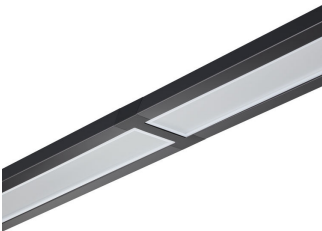
FlexBlend Surface Mounted
SM340C BK



FlexBlend Suspended SP340P WH



FlexBlend Surface Mounted
SM340C BK



FlexBlend Surface Mounted
SM340C MLO BK



FlexBlend Surface Mounted
SM340C BK



FlexBlend Surface Mounted
SM340C brackets



FlexBlend Surface Mounted
SM340C SI

FlexBlend, Surface Mounted

Product details

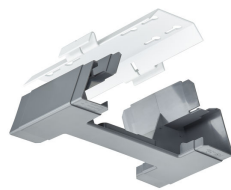
FlexBlend Suspended SP340P BK



FlexBlend Surface Mounted
SM340C O BK



FlexBlend Suspended SP340P SI



FlexBlend, Surface Mounted

General Information	
Driver included	Yes
Light source replaceable	No
Number of gear units	1 unit
Service tag	Yes
Light Technical	
Beam angle of light source	120 degree(s)
Color rendering index (CRI)	>90
Optic type	Wide beam
Operating and Electrical	
Protection class IEC	Safety class I
Input Voltage	220 to 240 V
Line Frequency	50 to 60 Hz
Suitable for random switching	Yes (relates to presence/ movement detection and daylight harvesting)
Controls and Dimming	
Dimmable	Yes
Maximum dim level	1%
Mechanical and Housing	
Mech. impact protection code	IK02
Ingress protection code	IP20
Approval and Application	
Ambient temperature range	+10 to +40 °C
CE mark	Yes
ENEC mark	ENEC plus mark
Flammability mark	For mounting on normally flammable surfaces
Flickering value (PstLM) - Flickering value as per EN 61000-3-3	1
Stroboscopic effect visibility measure (SVM)	0.4
Initial Performance (IEC Compliant)	
Initial chromaticity	(0.43, 0.40) SDCM <3
Luminous flux tolerance	+/-10%
Product Data	
Product family code	SM340C

Light Technical

		Correlated Color Temperature (Nom)	Luminous Efficacy (rated) (Nom)	Luminous Flux
Order Code	Full Product Name			
10369600	SM340C 35S/940 PSD MLO L150 WH	4000 K	108 lm/W	3,500 lm
10397900	SM340C 36S/940 PSD MLO L120 WH	4000 K	103 lm/W	3,600 lm
10398600	SM340C 40S/940 PSD MLO L120 WH	4000 K	103 lm/W	4,000 lm
18244800	SM340C 50S/940 PSD MLO L150 WH	4000 K	104 lm/W	5,000 lm
10377100	SM340C 35S/940 PSD O L150 WH	4000 K	125 lm/W	3,500 lm
10362700	SM340C 35S/940 PSD PCS L150 SI	4000 K	140 lm/W	3,500 lm
10370200	SM340C 35S/940 PSD MLO L150 SI	4000 K	108 lm/W	3,500 lm
10371900	SM340C 35S/940 PSD MLO L150 BK	4000 K	108 lm/W	3,500 lm
10361000	SM340C 35S/940 PSD PCS L150 WH	4000 K	140 lm/W	3,500 lm
10395500	SM340C 36S/940 PSD PCS L120 WH	4000 K	136 lm/W	3,600 lm
10396200	SM340C 42S/940 PSD PCS L120 WH	4000 K	131 lm/W	4,200 lm
18228800	SM340C 28S/940 PSD PCS L120 WH	4000 K	137 lm/W	2,800 lm
18232500	SM340C 36S/930 PSD PCS L120 WH	3000 K	131 lm/W	3,600 lm
18241700	SM340C 45S/940 PSD PCS L150 WH	4000 K	138 lm/W	4,500 lm
18242400	SM340C 52S/940 PSD PCS L150 WH	4000 K	133 lm/W	5,200 lm
18245500	SM340C 35S/930 PSD PCS L150 WH	3000 K	130 lm/W	3,500 lm
18246200	SM340C 45S/930 PSD PCS L150 WH	3000 K	132 lm/W	4,500 lm
10363400	SM340C 35S/940 PSD PCS L150 BK	4000 K	140 lm/W	3,500 lm

Operating and Electrical

FlexBlend, Surface Mounted

Order Code	Full Product Name	Power Consumption
10369600	SM340C 35S/940 PSD MLO L150 WH	32.5 W
10397900	SM340C 36S/940 PSD MLO L120 WH	35 W
10398600	SM340C 40S/940 PSD MLO L120 WH	39 W
18244800	SM340C 50S/940 PSD MLO L150 WH	48 W
10377100	SM340C 35S/940 PSD O L150 WH	28 W
10362700	SM340C 35S/940 PSD PCS L150 SI	25 W
10370200	SM340C 35S/940 PSD MLO L150 SI	32.5 W
10371900	SM340C 35S/940 PSD MLO L150 BK	32.5 W
10361000	SM340C 35S/940 PSD PCS L150 WH	25 W

Order Code	Full Product Name	Power Consumption
10395500	SM340C 36S/940 PSD PCS L120 WH	26.5 W
10396200	SM340C 42S/940 PSD PCS L120 WH	32 W
18228800	SM340C 28S/940 PSD PCS L120 WH	20.5 W
18232500	SM340C 36S/930 PSD PCS L120 WH	27.5 W
18241700	SM340C 45S/940 PSD PCS L150 WH	32.5 W
18242400	SM340C 52S/940 PSD PCS L150 WH	39 W
18245500	SM340C 35S/930 PSD PCS L150 WH	27 W
18246200	SM340C 45S/930 PSD PCS L150 WH	34 W
10363400	SM340C 35S/940 PSD PCS L150 BK	25 W

Mechanical and Housing

Order Code	Full Product Name	Housing Color
10369600	SM340C 35S/940 PSD MLO L150 WH	White
10397900	SM340C 36S/940 PSD MLO L120 WH	White
10398600	SM340C 40S/940 PSD MLO L120 WH	White
18244800	SM340C 50S/940 PSD MLO L150 WH	White
10377100	SM340C 35S/940 PSD O L150 WH	White
10362700	SM340C 35S/940 PSD PCS L150 SI	Silver
10370200	SM340C 35S/940 PSD MLO L150 SI	Silver
10371900	SM340C 35S/940 PSD MLO L150 BK	Black
10361000	SM340C 35S/940 PSD PCS L150 WH	White

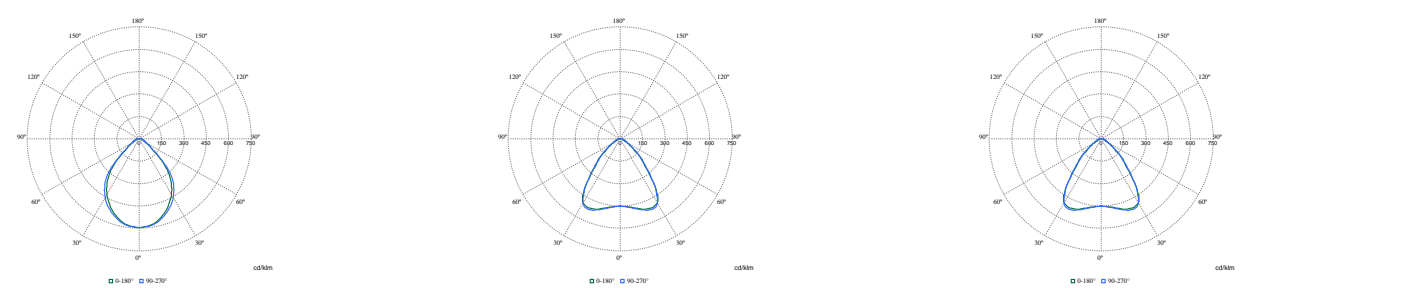
Order Code	Full Product Name	Housing Color
10395500	SM340C 36S/940 PSD PCS L120 WH	White
10396200	SM340C 42S/940 PSD PCS L120 WH	White
18228800	SM340C 28S/940 PSD PCS L120 WH	White
18232500	SM340C 36S/930 PSD PCS L120 WH	White
18241700	SM340C 45S/940 PSD PCS L150 WH	White
18242400	SM340C 52S/940 PSD PCS L150 WH	White
18245500	SM340C 35S/930 PSD PCS L150 WH	White
18246200	SM340C 45S/930 PSD PCS L150 WH	White
10363400	SM340C 35S/940 PSD PCS L150 BK	Black

Approval and Application

Order Code	Full Product Name	Glow-wire test
10369600	SM340C 35S/940 PSD MLO L150 WH	Temperature 650 °C, duration 30 s
10397900	SM340C 36S/940 PSD MLO L120 WH	Temperature 650 °C, duration 30 s
10398600	SM340C 40S/940 PSD MLO L120 WH	Temperature 650 °C, duration 30 s
18244800	SM340C 50S/940 PSD MLO L150 WH	Temperature 650 °C, duration 30 s
10377100	SM340C 35S/940 PSD O L150 WH	Temperature 850 °C, duration 30 s
10362700	SM340C 35S/940 PSD PCS L150 SI	Temperature 850 °C, duration 30 s
10370200	SM340C 35S/940 PSD MLO L150 SI	Temperature 650 °C, duration 30 s
10371900	SM340C 35S/940 PSD MLO L150 BK	Temperature 650 °C, duration 30 s
10361000	SM340C 35S/940 PSD PCS L150 WH	Temperature 850 °C, duration 30 s

Order Code	Full Product Name	Glow-wire test
10395500	SM340C 36S/940 PSD PCS L120 WH	Temperature 850 °C, duration 30 s
10396200	SM340C 42S/940 PSD PCS L120 WH	Temperature 850 °C, duration 30 s
18228800	SM340C 28S/940 PSD PCS L120 WH	Temperature 850 °C, duration 30 s
18232500	SM340C 36S/930 PSD PCS L120 WH	Temperature 850 °C, duration 30 s
18241700	SM340C 45S/940 PSD PCS L150 WH	Temperature 850 °C, duration 30 s
18242400	SM340C 52S/940 PSD PCS L150 WH	Temperature 850 °C, duration 30 s
18245500	SM340C 35S/930 PSD PCS L150 WH	Temperature 850 °C, duration 30 s
18246200	SM340C 45S/930 PSD PCS L150 WH	Temperature 850 °C, duration 30 s
10363400	SM340C 35S/940 PSD PCS L150 BK	Temperature 850 °C, duration 30 s

Polar Wide Diagrams

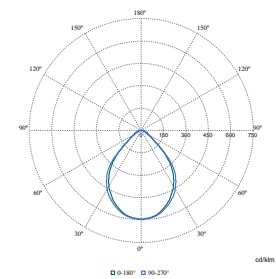


Polar Normal (separate) - SM340CI - 910925867137

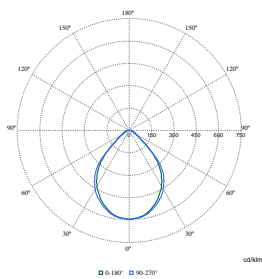
Polar Normal (separate) - SM340CI - 910925867099

Polar Normal (separate) - SM340CI - 910925867101

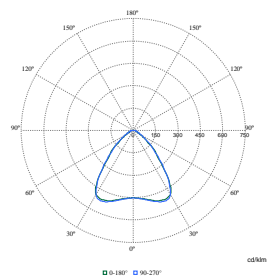
Polar Wide Diagrams



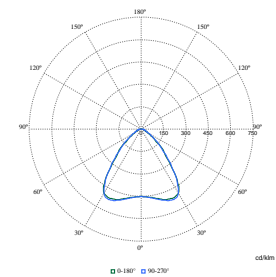
Polar Normal (separate) - SM340CI - 910925867108



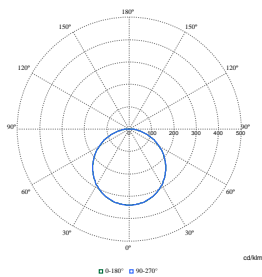
Polar Normal (separate) - SM340CI - 910925867110



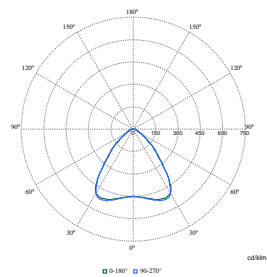
Polar Normal (separate) - SM340CI - 910925867135



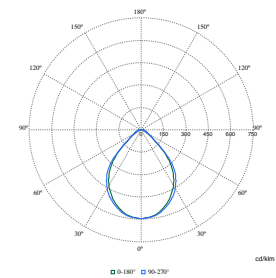
Polar Normal (separate) - SM340CI - 910925867102



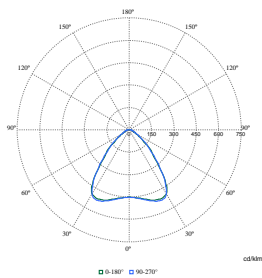
Polar Normal (separate) - SM340CI - 910925867116



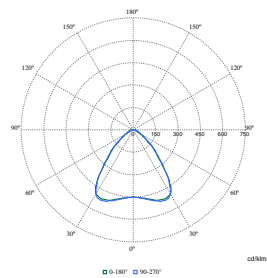
Polar Normal (separate) - SM340CI - 910925867134



Polar Normal (separate) - SM340CI - 910925867109

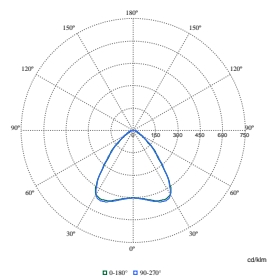


Polar Normal (separate) - SM340CI - 910925867869

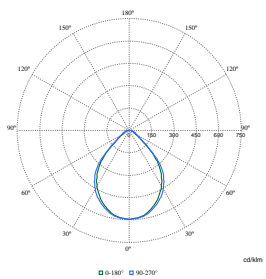


Polar Normal (separate) - SM340CI - 910925867865

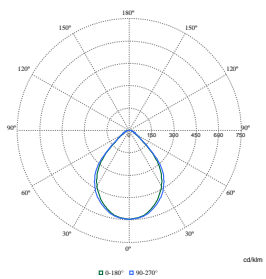
Polar Wide Diagrams



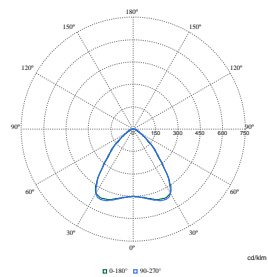
Polar Normal (separate) - SM340CI - 910925867878



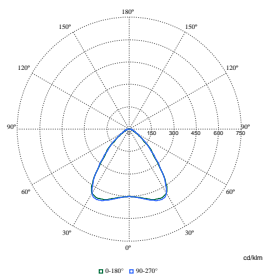
Polar Normal (separate) - SM340CI - 910925867136



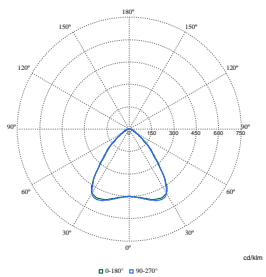
Polar Normal (separate) - SM340CI - 910925867881



Polar Normal (separate) - SM340CI - 910925867879



Polar Normal (separate) - SM340CI - 910925867883



Polar Normal (separate) - SM340CI - 910925867882

