



The flexible light line

KeyLine, Surface & Suspended

These days, many office owners and office lighting designers prefer lines of light. The reason is simple. Not only do light lines come in a minimalistic design; they also offer far more choice and flexibility. Short or long lines and luminaires, standalone luminaires, different optics including asymmetric, different shapes and even a variety of colors; anything is possible. And with KeyLine, all these benefits come at a competitive price while still complying with office lighting norms. KeyLine is a superb light line range with a slim, minimalistic design and a high lumen output to illuminate the brightest office spaces. But with comfortable, low levels of glare it's also easy on the eye and complies with UGR19. That makes KeyLine ideal for linear applications, as well as standalone suspended or surface-mounted luminaires (Accessories to be ordered separately). A range that offers the ultimate flexibility and unlimited possibilities. KeyLine design flexibility comes in the form of different lengths, colors and light outputs - including L-shapes, as well as straight lines. All with high efficiency up to 142 lm/W, and the option to upgrade with wireless connectivity and control. Add to that attractive pricing, and with KeyLine you can also enjoy excellent value that ensures a superb total cost of ownership.

Benefits

- Suitable for office applications
- Excellent total cost of ownership
- Wide range of options to suit the demands of different offices

Features

- Comfortable, low glare: <UGR19 for the full range
- High lumen output, up to 4,000 lm for 1.2 m version
- Interact connectivity-ready with wireless drivers
- Standard options in different lengths, colours and light outputs
- Customisation options

KeyLine, Surface & Suspended

Application

- Offices
- Retail
- Education

Warnings and Safety

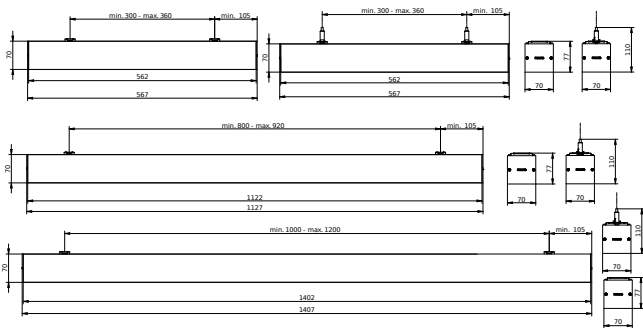
- KeyLine luminaires have an IP20 classification and are not protected against water ingress. We strongly recommend that the installation environment is checked for suitability.
- If – despite the IPX0 classification warning – luminaires are subject to water ingress, Philips and Signify cannot guarantee safety or prevent failure. In this case the product warranty does not apply and becomes void.

Versions



KeyLine suspended L1500, alu

Dimensional drawing



Product details



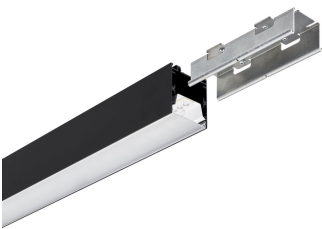
KeyLine line coupling, alu



KeyLine black with ceiling bracket
accessory for surface mounting

KeyLine, Surface & Suspended

Product details



KeyLine black with coupling piece accessory for line mounting



KeyLine line configuration, white



KeyLine SM350C, white



KeyLine configuration with L-corner SM350X



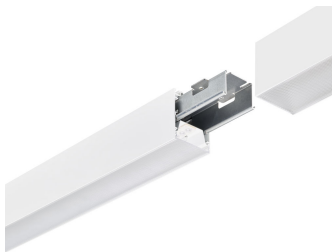
KeyLine black with end-cap accessory



KeyLine line coupling, white



KeyLine alu with suspension set for suspended mounting



KeyLine white line coupling with coupling piece accessory



KeyLine alu with end-cap accessory



KeyLine white with coupling piece accessory for line mounting

KeyLine, Surface & Suspended

Product details



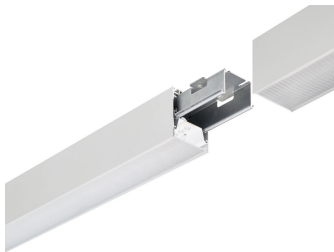
KeyLine structured optics UGR19 (PCS)



KeyLine line coupling, black



KeyLine SM350C, alu



KeyLine alu line coupling with coupling piece accessory



KeyLine line configuration, black



KeyLine alu with ceiling bracket accessory for surface mounting



KeyLine white with suspension set for suspended mounting



KeyLine white with ceiling bracket accessory for surface mounting



KeyLine white with end-cap accessory



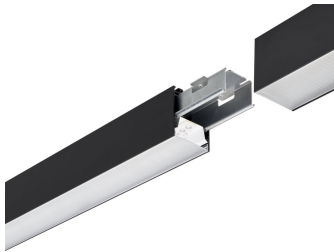
KeyLine alu with coupling piece accessory for line mounting

KeyLine, Surface & Suspended

Product details



KeyLine SM350C, black



KeyLine black line coupling with coupling piece accessory



KeyLine black with suspension set for suspended mounting

KeyLine, Surface & Suspended

General Information	
Driver included	Yes
Light source replaceable	No
Number of gear units	Unit
Service Tag	Yes
Light Technical	
Beam angle of light source	120 degree(s)
Correlated Colour Temperature (Nom)	4000 K
Colour rendering index (CRI)	>80
Optic type	Medium beam
Operating and Electrical	
Protection class IEC	Safety class I
Input Voltage	220 to 240 V
Line Frequency	50 to 60 Hz
Suitable for random switching	No
Mechanical and Housing	
Mech. impact protection code	IK06
Ingress protection code	IP20
Approval and Application	
Ambient temperature range	+10 to +35 °C
CE mark	Yes
ENEC mark	ENEC mark
Flammability mark	For mounting on normally flammable surfaces
Glow-wire test	Temperature 650 °C, duration 30 s
Flickering value (PstLM)	1
Stroboscopic effect	0.4
Initial Performance (IEC Compliant)	
Initial chromaticity	(0.39, 0.38) SDCM <3
Luminous flux tolerance	+/-10%
Product Data	
Product family code	SM350C

Light Technical

Order Code	Full Product Name	Luminous efficacy (rated) (nom.)	Luminous Flux
910925868381	SM350C 50S/840 PSU PCS L1500 BK	142 lm/W	5,200 lm
910925868384	SM350C 34S/840 PSD PCS L1500 BK	138 lm/W	3,600 lm
910925868387	SM350C 50S/840 PSD PCS L1500 BK	137 lm/W	5,200 lm
910925868385	SM350C 50S/840 PSD PCS L1500 ALU	137 lm/W	5,200 lm
910925868380	SM350C 50S/840 PSU PCS L1500 WH	142 lm/W	5,200 lm
910925868386	SM350C 50S/840 PSD PCS L1500 WH	137 lm/W	5,200 lm
910925868354	SM350C 40S/840 PSU PCS L1200 WH	140 lm/W	4,200 lm
910925868360	SM350C 40S/840 PSD PCS L1200 WH	135 lm/W	4,200 lm
910925868355	SM350C 40S/840 PSU PCS L1200 BK	140 lm/W	4,200 lm
910925868358	SM350C 27S/840 PSD PCS L1200 BK	138 lm/W	2,900 lm
910925868361	SM350C 40S/840 PSD PCS L1200 BK	135 lm/W	4,200 lm

Operating and Electrical

Order Code	Full Product Name	Power Consumption
910925868381	SM350C 50S/840 PSU PCS L1500 BK	36.5 W
910925868384	SM350C 34S/840 PSD PCS L1500 BK	26 W
910925868387	SM350C 50S/840 PSD PCS L1500 BK	38 W
910925868385	SM350C 50S/840 PSD PCS L1500 ALU	38 W
910925868380	SM350C 50S/840 PSU PCS L1500 WH	36.5 W
910925868386	SM350C 50S/840 PSD PCS L1500 WH	38 W

Order Code	Full Product Name	Power Consumption
910925868354	SM350C 40S/840 PSU PCS L1200 WH	30 W
910925868360	SM350C 40S/840 PSD PCS L1200 WH	31 W
910925868355	SM350C 40S/840 PSU PCS L1200 BK	30 W
910925868358	SM350C 27S/840 PSD PCS L1200 BK	21 W
910925868361	SM350C 40S/840 PSD PCS L1200 BK	31 W

KeyLine, Surface & Suspended

Controls and Dimming

Order Code	Full Product Name	Maximum dim	
		Dimmable	level
910925868381	SM350C 50S/840 PSU PCS L1500 BK	No	Not applicable
910925868384	SM350C 34S/840 PSD PCS L1500 BK	Yes	1%
910925868387	SM350C 50S/840 PSD PCS L1500 BK	Yes	1%
910925868385	SM350C 50S/840 PSD PCS L1500 ALU	Yes	1%
910925868380	SM350C 50S/840 PSU PCS L1500 WH	No	Not applicable
910925868386	SM350C 50S/840 PSD PCS L1500 WH	Yes	1%

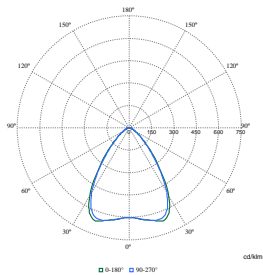
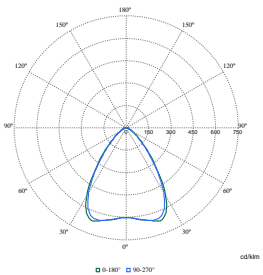
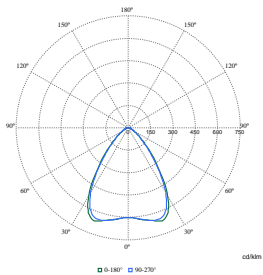
Order Code	Full Product Name	Maximum dim	
		Dimmable	level
910925868354	SM350C 40S/840 PSU PCS L1200 WH	No	Not applicable
910925868360	SM350C 40S/840 PSD PCS L1200 WH	Yes	1%
910925868355	SM350C 40S/840 PSU PCS L1200 BK	No	Not applicable
910925868358	SM350C 27S/840 PSD PCS L1200 BK	Yes	1%
910925868361	SM350C 40S/840 PSD PCS L1200 BK	Yes	1%

Mechanical and Housing

Order Code	Full Product Name	Housing Colour
910925868381	SM350C 50S/840 PSU PCS L1500 BK	Black
910925868384	SM350C 34S/840 PSD PCS L1500 BK	Black
910925868387	SM350C 50S/840 PSD PCS L1500 BK	Black
910925868385	SM350C 50S/840 PSD PCS L1500 ALU	Aluminium
910925868380	SM350C 50S/840 PSU PCS L1500 WH	White
910925868386	SM350C 50S/840 PSD PCS L1500 WH	White

Order Code	Full Product Name	Housing Colour
910925868354	SM350C 40S/840 PSU PCS L1200 WH	White
910925868360	SM350C 40S/840 PSD PCS L1200 WH	White
910925868355	SM350C 40S/840 PSU PCS L1200 BK	Black
910925868358	SM350C 27S/840 PSD PCS L1200 BK	Black
910925868361	SM350C 40S/840 PSD PCS L1200 BK	Black

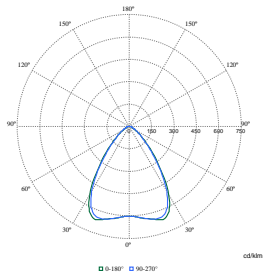
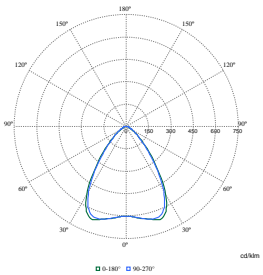
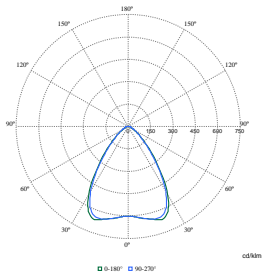
Polar Wide Diagrams



Polar Normal (separate) - SM350CI - 910925868355

Polar Normal (separate) - SM350CI - 910925868381

Polar Normal (separate) - SM350CI - 910925868385

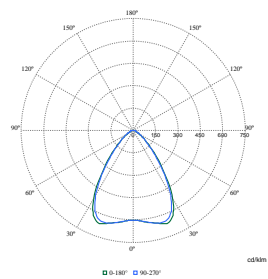


Polar Normal (separate) - SM350CI - 910925868354

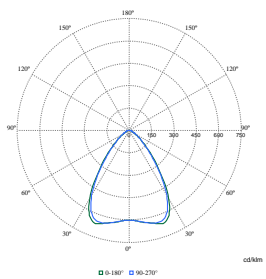
Polar Normal (separate) - SM350CI - 910925868387

Polar Normal (separate) - SM350CI - 910925868384

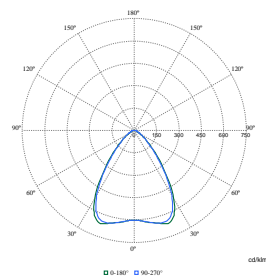
Polar Wide Diagrams



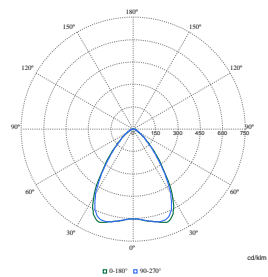
Polar Normal (separate) - SM350CI -
910925868386



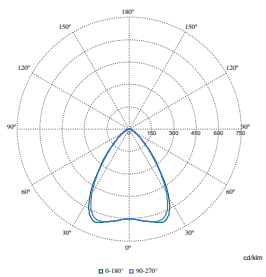
Polar Normal (separate) - SM350CI -
910925868360



Polar Normal (separate) - SM350CI -
910925868361



Polar Normal (separate) - SM350CI -
910925868358



Polar Normal (separate) - SM350CI -
910925868380

