



The flexible light line

KeyLine, Surface & Suspended

These days, many office owners and office lighting designers prefer lines of light. The reason is simple. Not only do light lines come in a minimalistic design; they also offer far more choice and flexibility. Short or long lines and luminaires, standalone luminaires, different shapes and even a variety of colours; anything is possible. And with KeyLine, all these benefits come at a competitive price while still complying with office lighting norms. KeyLine is a superb light line range with a slim, minimalistic design and a high lumen output to illuminate the brightest office spaces. But with comfortable, low levels of glare it's also easy on the eye and complies with UGR19. This makes KeyLine ideal for linear applications, as well as standalone suspended or surface-mounted luminaires. A range that offers the ultimate flexibility and unlimited possibilities. KeyLine design flexibility comes in the form of different lengths, colours and light outputs – including L-shapes, as well as straight lines. All with high efficiency up to 130 lm/W, and the option to upgrade with wireless connectivity and control. Add to that attractive pricing, and with KeyLine you can also enjoy excellent value that ensures a superb total cost of ownership.

Benefits

- Suitable for office applications
- Excellent total cost of ownership
- Wide range of options to suit the demands of different offices

Features

- Comfortable, low glare: <UGR19 for the full range
- High lumen output, up to 4000lm for 1.2m version
- Interact Connectivity ready with wireless drivers
- Standard options in different lengths, colors and light outputs
- Customization options

Application

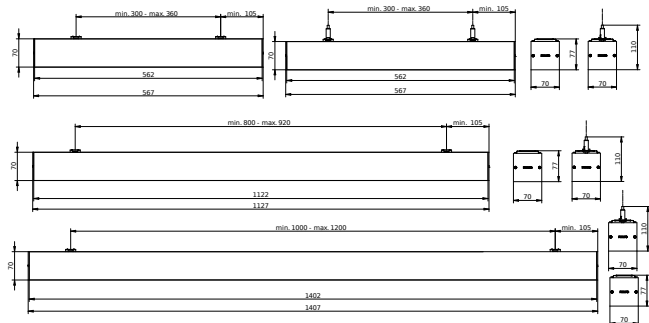
- Offices
- Retail
- Education

KeyLine, Surface & Suspended

Warnings and Safety

- KeyLine luminaires have an IP20 classification and are not protected against water ingress. We strongly recommend that the installation environment is checked for suitability.
- If – despite the IPX0 classification warning – luminaires are subject to water ingress, Philips and Signify cannot guarantee safety or prevent failure. In this case the product warranty does not apply and becomes void.

Dimensional drawing



Product details



KeyLine line coupling, alu



KeyLine line configuration, white



KeyLine SM350C, white



KeyLine configuration with L-corner SM350X



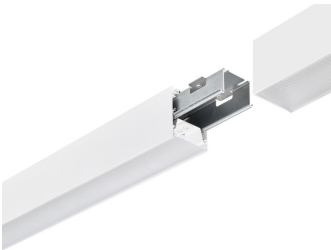
KeyLine line coupling, white



KeyLine alu with suspension set for suspended mounting

KeyLine, Surface & Suspended

Product details



KeyLine white line coupling with coupling piece accessory



KeyLine alu with end-cap accessory



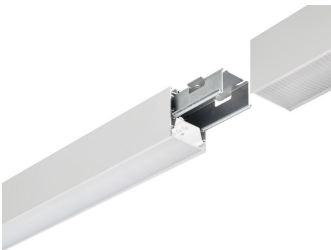
KeyLine white with coupling piece accessory for line mounting



KeyLine structured optics UGR19 (PCS)



KeyLine SM350C, alu



KeyLine alu line coupling with coupling piece accessory



KeyLine alu with ceiling bracket accessory for surface mounting



KeyLine white with suspension set for suspended mounting



KeyLine white with ceiling bracket accessory for surface mounting

KeyLine, Surface & Suspended

Product details



KeyLine white with end-cap
accessory



KeyLine alu with coupling piece
accessory for line mounting

General Information

| | |
|--------------------------|--------|
| Driver included | Yes |
| Light source replaceable | No |
| Number of gear units | 1 unit |
| Service tag | Yes |

Light Technical

| | |
|-----------------------------|---------------|
| Beam angle of light source | 120 degree(s) |
| Color rendering index (CRI) | >80 |
| Optic type | Medium beam |

Operating and Electrical

| | |
|-------------------------------|----------------|
| Protection class IEC | Safety class I |
| Input Voltage | 220 to 240 V |
| Line Frequency | 50 to 60 Hz |
| Suitable for random switching | No |

Mechanical and Housing

| | |
|------------------------------|------|
| Mech. impact protection code | IK06 |
| Ingress protection code | IP20 |

Approval and Application

| | |
|---|---|
| Ambient temperature range | +10 to +35 °C |
| CE mark | Yes |
| ENEC mark | ENEC mark |
| Flammability mark | For mounting on normally flammable surfaces |
| Glow-wire test | Temperature 650 °C, duration 30 s |
| Flickering value (PstLM) - Flickering value as per EN 61000-3-3 | 1 |
| Stroboscopic effect visibility measure (SVM) | 0.4 |

Initial Performance (IEC Compliant)

| | |
|-------------------------|--------|
| Luminous flux tolerance | +/-10% |
|-------------------------|--------|

Product Data

| | |
|---------------------|--------|
| Product family code | SM350C |
|---------------------|--------|

Light Technical

| Order Code | Full Product Name | Correlated Color Temperature (Nom) | Luminous Efficacy (rated) (Nom) | Luminous Flux |
|--------------|----------------------------------|------------------------------------|---------------------------------|---------------|
| 910925868353 | SM350C 40S/840 PSU PCS L1200 ALU | 4000 K | 140 lm/W | 4,200 lm |
| 910925868356 | SM350C 27S/840 PSD PCS L1200 ALU | 4000 K | 138 lm/W | 2,900 lm |
| 910925868374 | SM350C 40S/830 PSD PCS L1200 ALU | 3000 K | 129 lm/W | 4,000 lm |
| 910925868354 | SM350C 40S/840 PSU PCS L1200 WH | 4000 K | 140 lm/W | 4,200 lm |
| 910925868360 | SM350C 40S/840 PSD PCS L1200 WH | 4000 K | 135 lm/W | 4,200 lm |

KeyLine, Surface & Suspended

Operating and Electrical

| Order Code | Full Product Name | Power Consumption |
|--------------|----------------------------------|-------------------|
| 910925868353 | SM350C 40S/840 PSU PCS L1200 ALU | 30 W |
| 910925868356 | SM350C 27S/840 PSD PCS L1200 ALU | 21 W |
| 910925868374 | SM350C 40S/830 PSD PCS L1200 ALU | 31 W |

| Order Code | Full Product Name | Power Consumption |
|--------------|---------------------------------|-------------------|
| 910925868354 | SM350C 40S/840 PSU PCS L1200 WH | 30 W |
| 910925868360 | SM350C 40S/840 PSD PCS L1200 WH | 31 W |

Controls and Dimming

| Order Code | Full Product Name | Dimmable | Maximum dim level |
|--------------|----------------------------------|----------|-------------------|
| 910925868353 | SM350C 40S/840 PSU PCS L1200 ALU | No | Not applicable |
| 910925868356 | SM350C 27S/840 PSD PCS L1200 ALU | Yes | 1% |
| 910925868374 | SM350C 40S/830 PSD PCS L1200 ALU | Yes | 1% |

| Order Code | Full Product Name | Dimmable | Maximum dim level |
|--------------|---------------------------------|----------|-------------------|
| 910925868354 | SM350C 40S/840 PSU PCS L1200 WH | No | Not applicable |
| 910925868360 | SM350C 40S/840 PSD PCS L1200 WH | Yes | 1% |

Mechanical and Housing

| Order Code | Full Product Name | Housing Color |
|--------------|----------------------------------|---------------|
| 910925868353 | SM350C 40S/840 PSU PCS L1200 ALU | Aluminum |
| 910925868356 | SM350C 27S/840 PSD PCS L1200 ALU | Aluminum |
| 910925868374 | SM350C 40S/830 PSD PCS L1200 ALU | Aluminum |

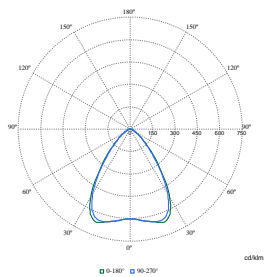
| Order Code | Full Product Name | Housing Color |
|--------------|---------------------------------|---------------|
| 910925868354 | SM350C 40S/840 PSU PCS L1200 WH | White |
| 910925868360 | SM350C 40S/840 PSD PCS L1200 WH | White |

Initial Performance (IEC Compliant)

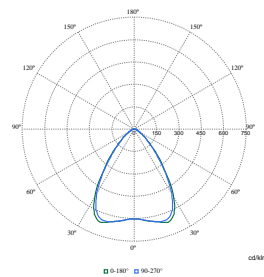
| Order Code | Full Product Name | Initial chromaticity |
|--------------|----------------------------------|----------------------|
| 910925868353 | SM350C 40S/840 PSU PCS L1200 ALU | (0.39, 0.38) SDCM <3 |
| 910925868356 | SM350C 27S/840 PSD PCS L1200 ALU | (0.39, 0.38) SDCM <3 |
| 910925868374 | SM350C 40S/830 PSD PCS L1200 ALU | (0.43, 0.40) SDCM <3 |

| Order Code | Full Product Name | Initial chromaticity |
|--------------|---------------------------------|----------------------|
| 910925868354 | SM350C 40S/840 PSU PCS L1200 WH | (0.39, 0.38) SDCM <3 |
| 910925868360 | SM350C 40S/840 PSD PCS L1200 WH | (0.39, 0.38) SDCM <3 |

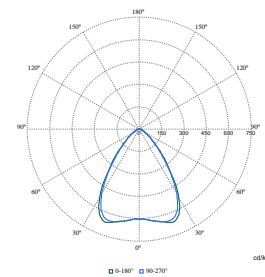
Polar Wide Diagrams



Polar Normal (separate) - SM350CI - 910925868353



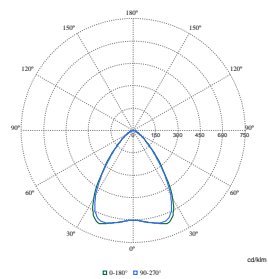
Polar Normal (separate) - SM350CI - 910925868356



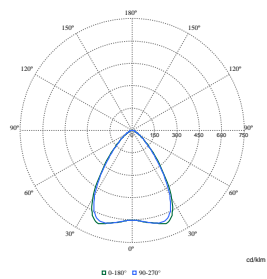
Polar Normal (separate) - SM350CI - 910925868354

KeyLine, Surface & Suspended

Polar Wide Diagrams



Polar Normal (separate) - SM350CI -
910925868360



Polar Normal (separate) - SM350CI -
910925868374

