



FlexBlend heading the way to efficient and flexible furnished offices areas

FlexBlend, Suspended

Philips FlexBlend is an attractive family of surface-mounted and suspended luminaires, next to FlexBlend recessed. The luminaire range is enabling building owners to advance their lighting operations, by offering office-compliant lighting with a return on investment of less than three to four years. FlexBlend provides the required flexibility through an adaptable design. This gives the possibility to install the luminaires easily in the field, at any moment. Even when the luminaire is suspended today, tomorrow it can be adapted to a surface-mounted installation on site. And vice versa. The suspended and surface-mounted luminaire range fits many different office spaces like open plan offices, corridors, reception areas or meeting rooms. FlexBlend is offered in both lines and as standalone, using the same lighting module. This gives users the option to use FlexBlend as standalone today, and tomorrow, as a line. The controller is integrated in the luminaire. As technology is changing fast, the ideal lighting solution is also expected to be ready to incorporate innovations that can help optimise operations further. For this reason, FlexBlend has all connectivity and future-ready options available. As a System Ready luminaire, it can be paired with lighting management systems such as the Philips SpaceWise, and to software-based lighting systems such as Interact Office wired (PoE) and Interact Office wireless and/or existing and upcoming sensor innovations. The luminaire range is therefore future-ready and can be delivered without any system component, and in a next phase, in the field to be upgraded. An attractive opportunity for new installations and renovations.

FlexBlend, Suspended

Benefits

- Return of investment less than three to four years
- A flexible office, with a choice of luminaires to fit many office areas applications
- Future ready: scalable and ready to be connected to controls and lighting systems

Features

- Fully office-compliant (UGR <19, L65 < 3,000 cd/sm), light level according to office application requirements
- Homogenous and uniform light effect and CRI90
- Various mounting options, dimensional variety and 3 hour emergency versions
- Integrated sensors
- Ready to be connected to software-based lighting systems, such as Interact Office

Application

- Offices
- Education
- Healthcare

Warnings and Safety

- The product is IP20 & as such is not protected against water ingress and as such we strongly recommend that the environment in which the luminaire is to be installed is suitably checked
- If the above advice is not followed and the luminaires are subject to water ingress, Philips/Signify cannot guarantee safe use and the product warranty will become void

Versions



FlexBlend Suspended-SM340C-
MLO-WH-SENS1-L150

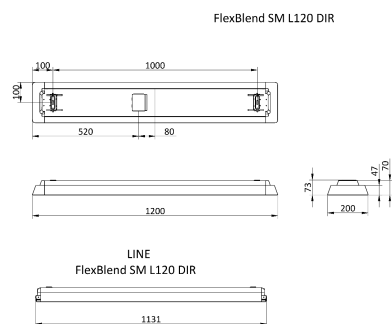
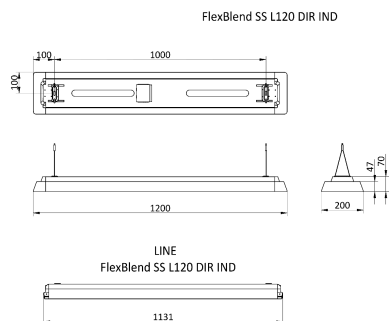
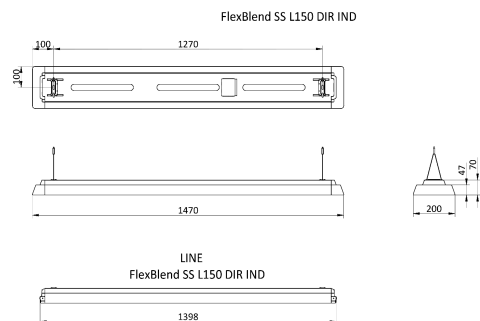


FlexBlend Suspended SP340P
MLO BK



FlexBlend Suspended SP340P
MLO SI

Dimensional drawing



Product details



FlexBlend Suspended SP340P WH



FlexBlend Suspended SP340P



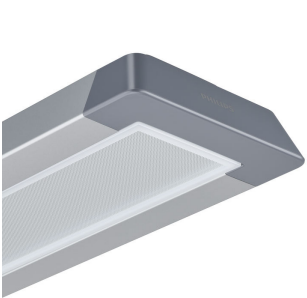
FlexBlend Suspended SP340P O
BK



FlexBlend Suspended SP340P SI

FlexBlend, Suspended

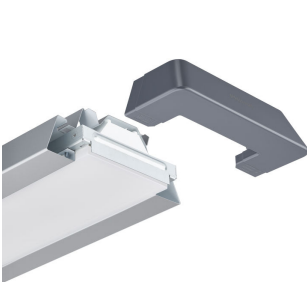
Product details



FlexBlend Suspended SP340P
MLO SI



FlexBlend Suspended SP340P PCS
WH



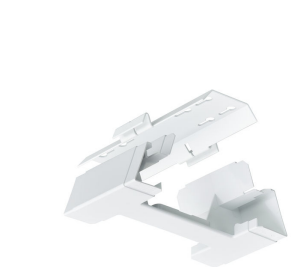
FlexBlend Suspended SP340P O SI



FlexBlend Suspended SP340P PCS
BK



FlexBlend Suspended SP340P SI



FlexBlend Suspended SP340P WH



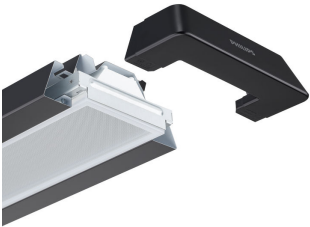
FlexBlend Suspended SP340P BK



FlexBlend_Suspended_SP340P-
line-MLO-WH-SWZU

FlexBlend, Suspended

Product details



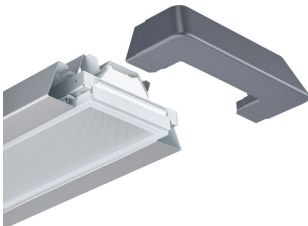
FlexBlend Suspended SP340P
MLO BK



FlexBlend Suspended SP340P
MLO BK



FlexBlend Suspended SP340P BK



FlexBlend Suspended SP340P
MLO SI



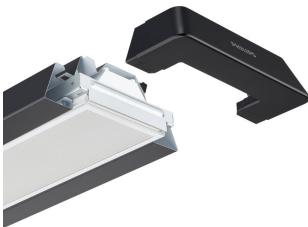
FlexBlend Surface Mounted
SM340C



FlexBlend Suspended SP340P
MLO WH



FlexBlend Suspended SP340P SI



FlexBlend Suspended SP340P PCS
BK

FlexBlend, Suspended

Product details

FlexBlend Suspended SP340P BK



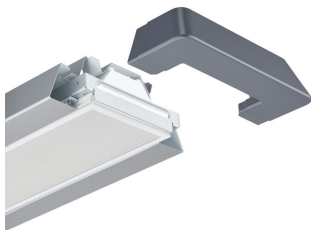
FlexBlend Suspended SP340P WH



FlexBlend Suspended SP340P WH



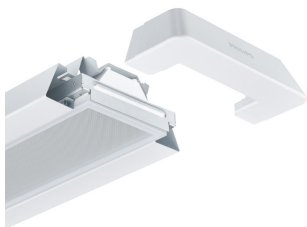
FlexBlend Suspended SP340P PCS
SI



FlexBlend Suspended SP340P WH



FlexBlend Suspended SP340P
MLO WH



FlexBlend Suspended SP340P BK



FlexBlend Suspended SP340P SI

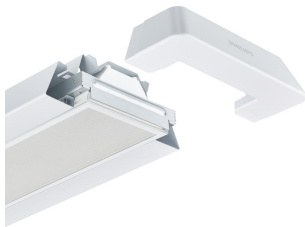


FlexBlend, Suspended

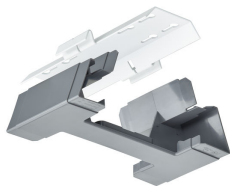
Product details



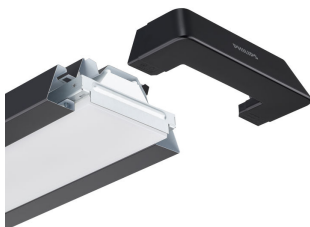
FlexBlend Suspended SP340P BK



FlexBlend Suspended SP340P PCS
WH



FlexBlend Suspended SP340P SI



FlexBlend Suspended SP340P O
BK

FlexBlend, Suspended

General Information	
Driver included	Yes
Light source replaceable	No
Number of gear units	Unit
Service Tag	Yes
Light Technical	
Correlated Colour Temperature (Nom)	4000 K
Colour rendering index (CRI)	>90
Optic type	Wide beam
Operating and Electrical	
Protection class IEC	Safety class I
Input Voltage	220 to 240 V
Line Frequency	50 to 60 Hz
Controls and Dimming	
Dimmable	Yes
Maximum dim level	1%
Mechanical and Housing	
Mech. impact protection code	IK02
Ingress protection code	IP20
Approval and Application	
Ambient temperature range	+10 to +40 °C
CE mark	Yes
Flammability mark	For mounting on normally flammable surfaces
Flickering value (PstLM)	1
Stroboscopic effect	0.4
Initial Performance (IEC Compliant)	
Luminous flux tolerance	+/-10%

Light Technical

Order Code	Full Product Name	Beam angle of light source	Luminous efficacy (rated) (nom.)	Luminous Flux
10365800	SP342P 45S/940 PSD PCS SMT L150 WH	120 degree(s)	129 lm/W	4,500 lm
10387000	SP340P 36S/940 PSD PCS SMT L120 WH	120 degree(s)	136 lm/W	3,600 lm
10391700	SP342P 48S/940 PSD PCS SMT L120 WH	120 degree(s)	133 lm/W	4,800 lm
18294300	SP342P 60S/940 PSD PCS SMT L150 WH	120 degree(s)	129 lm/W	6,000 lm
70810500	SP342P 45S/940 SRD MLO U4 SMT L150 WH	- degree(s)	106 lm/W	4,500 lm
70820400	SP340P 36S/940 SRD PCS U4 SMT L120 WH	- degree(s)	133 lm/W	3,600 lm
10375700	SP342P 45S/940 PSD MLO SMT L150 BK	120 degree(s)	106 lm/W	4,500 lm
10374000	SP342P 45S/940 PSD MLO SMT L150 SI	120 degree(s)	106 lm/W	4,500 lm
10373300	SP342P 45S/940 PSD MLO SMT L150 WH	120 degree(s)	106 lm/W	4,500 lm
10393100	SP342P 48S/940 PSD MLO SMT L120 WH	120 degree(s)	108 lm/W	4,800 lm
10394800	SP342P 52S/940 PSD MLO SMT L120 WH	120 degree(s)	107 lm/W	5,200 lm

Operating and Electrical

Order Code	Full Product Name	Power Consumption	Suitable for random switching
10365800	SP342P 45S/940 PSD PCS SMT L150 WH	35 W	Yes (relates to presence/ movement detection and daylight harvesting)
10387000	SP340P 36S/940 PSD PCS SMT L120 WH	26.5 W	Yes (relates to presence/ movement detection and daylight harvesting)
10391700	SP342P 48S/940 PSD PCS SMT L120 WH	36 W	Yes (relates to presence/ movement detection and daylight harvesting)
18294300	SP342P 60S/940 PSD PCS SMT L150 WH	46.5 W	Yes (relates to presence/ movement detection and daylight harvesting)

Order Code	Full Product Name	Power Consumption	Suitable for random switching
70810500	SP342P 45S/940 SRD MLO U4 SMT L150 WH	42.5 W	No
70820400	SP340P 36S/940 SRD PCS U4 SMT L120 WH	26 W	No
10375700	SP342P 45S/940 PSD MLO SMT L150 BK	42.5 W	Yes (relates to presence/ movement detection and daylight harvesting)
10374000	SP342P 45S/940 PSD MLO SMT L150 SI	42.5 W	Yes (relates to presence/ movement detection and daylight harvesting)

FlexBlend, Suspended

Order Code	Full Product Name	Power Consumption	Suitable for random switching
10373300	SP342P 45S/940 PSD MLO SMT L150 WH	42.5 W	Yes (relates to presence/ movement detection and daylight harvesting)
10393100	SP342P 48S/940 PSD MLO SMT L120 WH	44.5 W	Yes (relates to presence/ movement detection and daylight harvesting)

Controls and Dimming

Order Code	Full Product Name	Embedded control
10365800	SP342P 45S/940 PSD PCS SMT L150 WH	-
10387000	SP340P 36S/940 PSD PCS SMT L120 WH	-
10391700	SP342P 48S/940 PSD PCS SMT L120 WH	-
18294300	SP342P 60S/940 PSD PCS SMT L150 WH	-
70810500	SP342P 45S/940 SRD MLO U4 SMT L150 WH	Upgradable sensor slot with SNS210 sensor
70820400	SP340P 36S/940 SRD PCS U4 SMT L120 WH	Upgradable sensor slot with SNS210 sensor

Mechanical and Housing

Order Code	Full Product Name	Housing Colour
10365800	SP342P 45S/940 PSD PCS SMT L150 WH	White
10387000	SP340P 36S/940 PSD PCS SMT L120 WH	White
10391700	SP342P 48S/940 PSD PCS SMT L120 WH	White
18294300	SP342P 60S/940 PSD PCS SMT L150 WH	White
70810500	SP342P 45S/940 SRD MLO U4 SMT L150 WH	White
70820400	SP340P 36S/940 SRD PCS U4 SMT L120 WH	White

Approval and Application

Order Code	Full Product Name	ENEC mark	Glow-wire test
10365800	SP342P 45S/940 PSD PCS SMT L150 WH	ENEC plus mark	Temperature 850 °C, duration 30 s
10387000	SP340P 36S/940 PSD PCS SMT L120 WH	ENEC plus mark	Temperature 850 °C, duration 30 s
10391700	SP342P 48S/940 PSD PCS SMT L120 WH	ENEC plus mark	Temperature 850 °C, duration 30 s
18294300	SP342P 60S/940 PSD PCS SMT L150 WH	ENEC plus mark	Temperature 850 °C, duration 30 s
70810500	SP342P 45S/940 SRD MLO U4 SMT L150 WH	ENEC mark	Temperature 650 °C, duration 30 s
70820400	SP340P 36S/940 SRD PCS U4 SMT L120 WH	ENEC mark	Temperature 850 °C, duration 30 s

Initial Performance (IEC Compliant)

Order Code	Full Product Name	Initial chromaticity
10365800	SP342P 45S/940 PSD PCS SMT L150 WH	(0.43, 0.40) SDCM <3
10387000	SP340P 36S/940 PSD PCS SMT L120 WH	(0.43, 0.40) SDCM <3

Order Code	Full Product Name	Power Consumption	Suitable for random switching
10394800	SP342P 52S/940 PSD MLO SMT L120 WH	48.5 W	Yes (relates to presence/ movement detection and daylight harvesting)

Order Code	Full Product Name	Embedded control
10375700	SP342P 45S/940 PSD MLO SMT L150 BK	-
10374000	SP342P 45S/940 PSD MLO SMT L150 SI	-
10373300	SP342P 45S/940 PSD MLO SMT L150 WH	-
10393100	SP342P 48S/940 PSD MLO SMT L120 WH	-
10394800	SP342P 52S/940 PSD MLO SMT L120 WH	-

Order Code	Full Product Name	Housing Colour
10375700	SP342P 45S/940 PSD MLO SMT L150 BK	Black
10374000	SP342P 45S/940 PSD MLO SMT L150 SI	Silver
10373300	SP342P 45S/940 PSD MLO SMT L150 WH	White
10393100	SP342P 48S/940 PSD MLO SMT L120 WH	White
10394800	SP342P 52S/940 PSD MLO SMT L120 WH	White

Order Code	Full Product Name	ENEC mark	Glow-wire test
10375700	SP342P 45S/940 PSD MLO SMT L150 BK	ENEC plus mark	Temperature 650 °C, duration 30 s
10374000	SP342P 45S/940 PSD MLO SMT L150 SI	ENEC plus mark	Temperature 650 °C, duration 30 s
10373300	SP342P 45S/940 PSD MLO SMT L150 WH	ENEC plus mark	Temperature 650 °C, duration 30 s
10393100	SP342P 48S/940 PSD MLO SMT L120 WH	ENEC plus mark	Temperature 650 °C, duration 30 s
10394800	SP342P 52S/940 PSD MLO SMT L120 WH	ENEC plus mark	Temperature 650 °C, duration 30 s

Order Code	Full Product Name	Initial chromaticity
10391700	SP342P 48S/940 PSD PCS SMT L120 WH	(0.43, 0.40) SDCM <3
18294300	SP342P 60S/940 PSD PCS SMT L150 WH	(0.43, 0.40) SDCM <3

FlexBlend, Suspended

Order Code	Full Product Name	Initial chromaticity
70810500	SP342P 45S/940 SRD MLO U4 SMT L150 WH	0.38,0.37
70820400	SP340P 36S/940 SRD PCS U4 SMT L120 WH	0.38,0.37
10375700	SP342P 45S/940 PSD MLO SMT L150 BK	(0.43, 0.40) SDCM <3
10374000	SP342P 45S/940 PSD MLO SMT L150 SI	(0.43, 0.40) SDCM <3

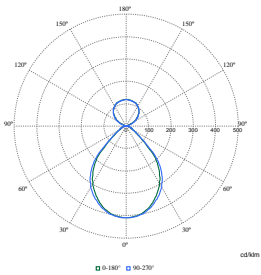
Order Code	Full Product Name	Initial chromaticity
10373300	SP342P 45S/940 PSD MLO SMT L150 WH	(0.43, 0.40) SDCM <3
10393100	SP342P 48S/940 PSD MLO SMT L120 WH	(0.43, 0.40) SDCM <3
10394800	SP342P 52S/940 PSD MLO SMT L120 WH	(0.43, 0.40) SDCM <3

Product Data

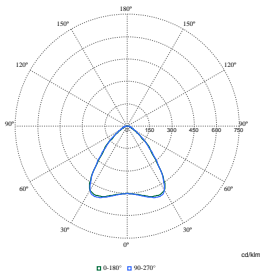
Order Code	Full Product Name	Product family code
10365800	SP342P 45S/940 PSD PCS SMT L150 WH	SP342P
10387000	SP340P 36S/940 PSD PCS SMT L120 WH	SP340P
10391700	SP342P 48S/940 PSD PCS SMT L120 WH	SP342P
18294300	SP342P 60S/940 PSD PCS SMT L150 WH	SP342P
70810500	SP342P 45S/940 SRD MLO U4 SMT L150 WH	SP342P
70820400	SP340P 36S/940 SRD PCS U4 SMT L120 WH	SP340P

Order Code	Full Product Name	Product family code
10375700	SP342P 45S/940 PSD MLO SMT L150 BK	SP342P
10374000	SP342P 45S/940 PSD MLO SMT L150 SI	SP342P
10373300	SP342P 45S/940 PSD MLO SMT L150 WH	SP342P
10393100	SP342P 48S/940 PSD MLO SMT L120 WH	SP342P
10394800	SP342P 52S/940 PSD MLO SMT L120 WH	SP342P

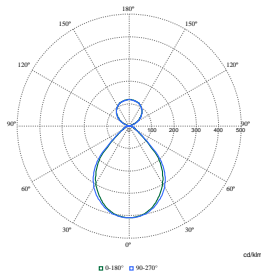
Polar Wide Diagrams



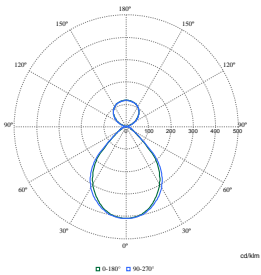
Polar Normal (separate) - SM340CI - 910925868897



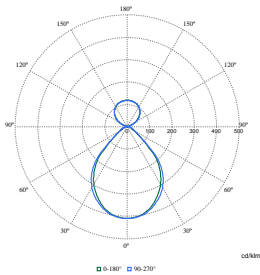
Polar Normal (separate) - SM340CI - 910925868908



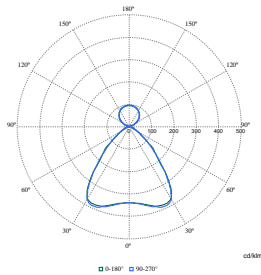
Polar Normal (separate) - SM340CI - 910925867112



Polar Normal (separate) - SM340CI - 910925867113

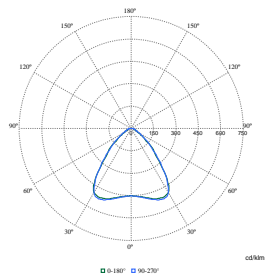


Polar Normal (separate) - SM340CI - 910925867114

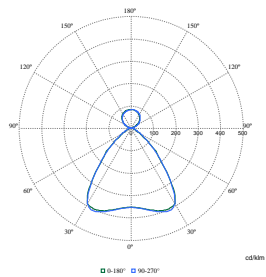


Polar Normal (separate) - SM340CI - 910925867104

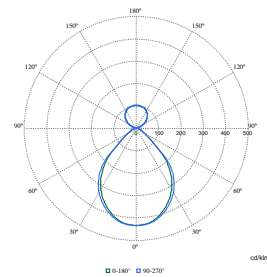
Polar Wide Diagrams



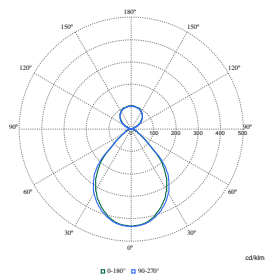
Polar Normal (separate) - SM340CI -
910925867126



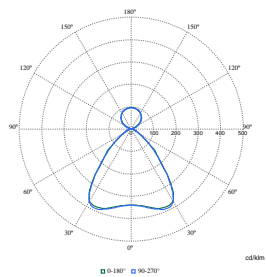
Polar Normal (separate) - SM340CI -
910925867130



Polar Normal (separate) - SM340CI -
910925867132



Polar Normal (separate) - SM340CI -
910925867133



Polar Normal (separate) - SM340CI -
910925867932

