



A powerful and sustainable all-rounder for retail applications

GreenSpace Evo

GreenSpace Evo Projector is a powerful and flexible projector for retail with a subtle and neutral design. The 3D printed housing is crafted from at least 65% recycled or bio-circular materials, while the heatsink is made from 85% recycled aluminium. Because of its circular design, the luminaire is upgradable, reusable, fully serviceable and recyclable. Combined with the high energy efficiency, this makes the GreenSpace Evo a sustainable projector choice. The PerfectAccent reflectors ensure a light effect with increased sparkle and improved shopper eye comfort. GreenSpace Evo also comes in state-of-the-art ultra-efficient variants and integrates seamlessly onto 3C- and DALI-tracks, CoreLine Trunking and Maxos fusion. Further customisation of colours and textures is possible via Philips MyCreation

Benefits

- Blends into stores with a clean and neutral design
- More sparkle and enhanced shopper eye comfort with PerfectAccent reflectors
- Extend the useful life of the product with easy serviceability and upgradeability
- The recycled materials and high energy efficiency help further reduce the carbon footprint of the product

Features

- No tools required for access to the optics, LED and front glass
- Serviceable and upgradeable with standard tools
- Reduced carbon footprint due to high efficacy (ultra-efficient versions available)
- Equipped with state-of-the-art PerfectAccent reflectors
- Very broad aiming flexibility, including upward lighting
- Connectivity options: Interact compatible DALI (DIA), Indoor positioning (DIA-VLC) and Wireless (WIA)
- Optional front glass (recommended for dusty environments)

Application

- Food and large retailers
- Fashion
- Petrol and Convenience

Warnings and Safety

- Cleaning of the optic should only be done with pressurized air. Touching the LED or reflector is forbidden. For food preparation areas and areas with high levels of dust, the use of the optional front glass is strongly advised, as it can be cleaned with a (dry) microfiber cloth
- During maintenance, the product must be switched off and cooled down
- The product must be installed out of arm's reach. Manipulating the product when hot is only possible with an insulated glove

Versions



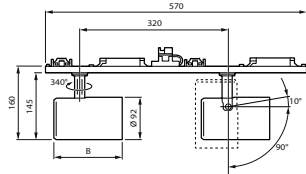
ST333X2 GreenSpace Evo
Projector double spotlight for
Coreline trunking, white



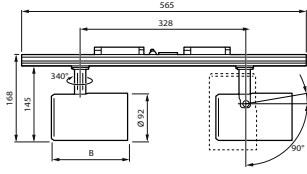
ST333X2 GreenSpace Evo
Projector double spotlight for
Maxos fusion, white

Dimensional drawing

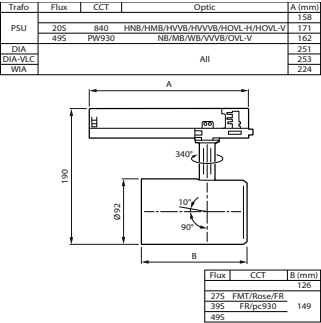
Flux	CCT	B (mm)
205	827/830/840/PW930/PW940/PC930	126
195	FMT/Rose	
275	827/CH/830/840/PW930/PW940/PC930	
395	827/CH/830/840/PW930/PW940	
275	FMT/Rose/FR	149
395	FR/PC930	
495	827/830/840/PW930/PW940	



Flux	CCT	B (mm)
205	827/830/840/PW930/PW940/PC930	126
195	FMT/Rose	
275	827/CH/830/840/PW930/PW940/PC930	
395	827/CH/830/840/PW930/PW940	
275	FMT/Rose/FR	149
395	FR/PC930	
495	827/830/840/PW930/PW940	



Dimensional drawing



Product details



ST333T GreenSpace Evo Projector
white

General Information	
Driver included	Yes
Light Technical	
Correlated Colour Temperature (Nom)	3000 K
Operating and Electrical	
Protection class IEC	Safety class II
Input Voltage	210 to 240 V
Line Frequency	50 to 60 Hz
Suitable for random switching	Not applicable
Controls and Dimming	
Dimmable	No
Mechanical and Housing	
Housing Colour	White
Mech. impact protection code	IK02
Ingress protection code	IP20
Emergency Operation	
Central Emergency	No
Approval and Application	
Ambient temperature range	+10 to +25 °C
CE mark	Yes
ENEC mark	ENEC mark
Flammability mark	-
Glow-wire test	Temperature 650 °C, duration 30 s
Initial Performance (IEC Compliant)	
Luminous flux tolerance	+/-10%

General Information

Order Code	Full Product Name	Number of gear units
910505104597	ST333T 27S/830 PSU WB WH481	Unit
910505104601	ST333T 27S/PW930 UE PSU HWB WH481	Unit
910505104609	ST333T 39S/830 PSU WB WH481	Unit
910505104614	ST333T 39S/PW930 UE PSU HWB WH481	Unit
910505104622	ST333Y2 27S/830 PSU WB WH481	2 units
910505104618	ST333X2 27S/830 PSU WB WH481	2 units

Light Technical

Order Code	Full Product Name	Colour rendering index (CRI)	Luminous efficacy (rated) (nom.)	Luminous Flux	Optic type
910505104597	ST333T 27S/830 PSU WB WH481	80	144 lm/W	2,700 lm	Wide beam
910505104601	ST333T 27S/PW930 UE PSU HWB WH481	90	155 lm/W	2,700 lm	High-reflective metal reflector Wide beam 40 to 80 degrees
910505104609	ST333T 39S/830 PSU WB WH481	80	143 lm/W	4,000 lm	Wide beam
910505104614	ST333T 39S/PW930 UE	90	159 lm/W	3,900 lm	High-reflective

Order Code	Full Product Name	Colour rendering index (CRI)	Luminous efficacy (rated) (nom.)	Luminous Flux	Optic type
	PSU HWB WH481				metal reflector Wide beam 40 to 80 degrees
910505104622	ST333Y2 27S/830 PSU WB WH481	80	137 lm/W	5,400 lm	Wide beam
910505104618	ST333X2 27S/830 PSU WB WH481	80	137 lm/W	5,400 lm	Wide beam

Operating and Electrical

Order Code	Full Product Name	Power Consumption
910505104597	ST333T 27S/830 PSU WB WH481	20.5 W
910505104601	ST333T 27S/PW930 UE PSU HWB WH481	19 W
910505104609	ST333T 39S/830 PSU WB WH481	31.5 W

Order Code	Full Product Name	Power Consumption
910505104614	ST333T 39S/PW930 UE PSU HWB WH481	26.5 W
910505104622	ST333Y2 27S/830 PSU WB WH481	39.8 W
910505104618	ST333X2 27S/830 PSU WB WH481	39.8 W

Initial Performance (IEC Compliant)

Order Code	Full Product Name	Initial chromaticity
910505104597	ST333T 27S/830 PSU WB WH481	(0.434, 0.403)
910505104601	ST333T 27S/PW930 UE PSU HWB WH481	(0.422, 0.386)
910505104609	ST333T 39S/830 PSU WB WH481	(0.434, 0.403)

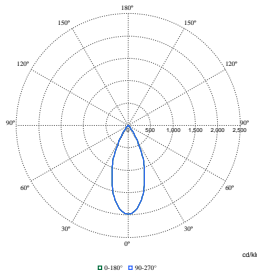
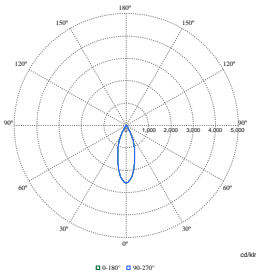
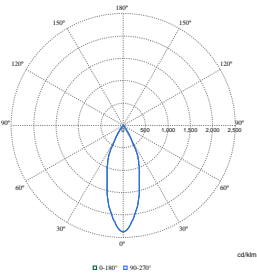
Order Code	Full Product Name	Initial chromaticity
910505104614	ST333T 39S/PW930 UE PSU HWB WH481	(0.422, 0.386)
910505104622	ST333Y2 27S/830 PSU WB WH481	(0.434, 0.403)
910505104618	ST333X2 27S/830 PSU WB WH481	(0.434, 0.403)

Product Data

Order Code	Full Product Name	Product family code
910505104597	ST333T 27S/830 PSU WB WH481	ST333T
910505104601	ST333T 27S/PW930 UE PSU HWB WH481	ST333T
910505104609	ST333T 39S/830 PSU WB WH481	ST333T

Order Code	Full Product Name	Product family code
910505104614	ST333T 39S/PW930 UE PSU HWB WH481	ST333T
910505104622	ST333Y2 27S/830 PSU WB WH481	ST333Y2
910505104618	ST333X2 27S/830 PSU WB WH481	ST333X2

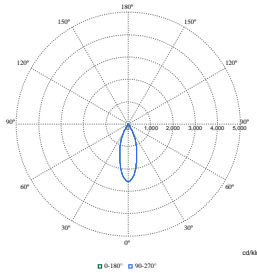
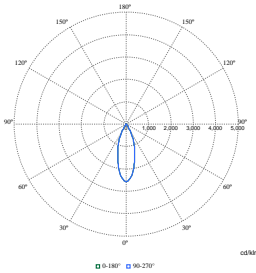
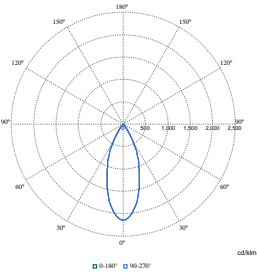
Polar Wide Diagrams



Polar Normal (separate) - ST333TI - 910505104609

Polar Normal (separate) - ST333TI - 910505104597

Polar Normal (separate) - ST333TI - 910505104614



Polar Normal (separate) - ST333TI - 910505104601

Polar Normal (separate) - ST333TI - 910505104618

Polar Normal (separate) - ST333TI - 910505104622

