



Small in size, big in quality

TrueFashion

TrueFashion is the LED projector family answering miniaturization and presentation needs of specialized retailers. Firstly, these miniaturized spots with clean and fine detailing offer contemporary design and blend seamlessly into your store interior for a tailor-made look. Secondly, it provides high quality accentuation effect thanks to its innovative OptiAccent lens technology (FPO), which provides higher central intensity beam without spill light to maximize the contrast ratio hence optimize the accent effect. Especially in challenging narrow spot (12D) and spot (18D) applications, the difference of OptiAccent to Chip on Board and reflector optics is like day and night. OptiAccent also reduces direct glare by a factor of 5 to enable superior visual comfort. Lastly, TrueFashion also has the light spectra taken care of: the specially designed Philips LED flavors enhance colors (saturation) and whites, while offering high degree of fidelity (>CRI90). This is how TrueFashion ensures a superior light experience in your retail applications.

Benefits

- High-impact and dramatic accentuation effect
- Unobtrusive and flexible lighting installation
- Bright whites, crisp blacks, vibrant colors
- Increased visual comfort

Features

- Miniaturized spot head in the diameter of 66mm for the Mini and 80mm for the Compact size
- OptiAccent (FPO) Lens technology for maximizing central intensity (up to 40%), eliminating spill light/halo in compared to a traditional Chip-On Board LED and reflector optical system, hence offering high contrast accentuation as opposed to a flat and vague light effect (in Compact only)
- Philips LED flavors: PremiumWhite and PremiumColor, CRI>90 and 3000K (ask your sales contact for different requests)
- Smooth powder coated White or Black paint finish (ask your sales contact for different requests)
- Extra narrow beam spot of 6° with 64K Candela central beam
- Full range of beam spread: 6° / 12° /18° /24° /30° /36° (6° in TrueFashion Highlight, and 12°,24°,36° in Compact only)

Application

- Fashion
- Retail
- Hospitality
- Food and Large Retailers

Warnings and Safety

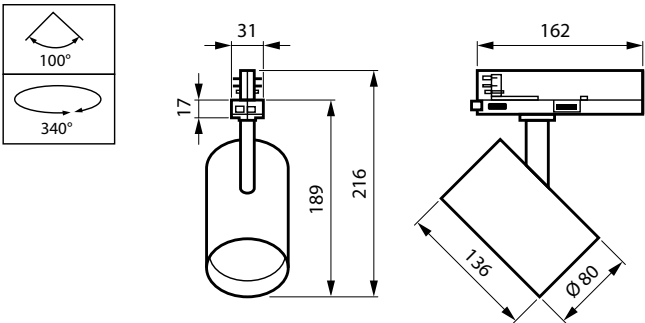
- The luminaire should be mounted outside of arm's reach
- The luminaire should be installed and disassembled by a qualified electrician and wired in accordance with the latest IEE electrical regulations or the national requirements

Versions

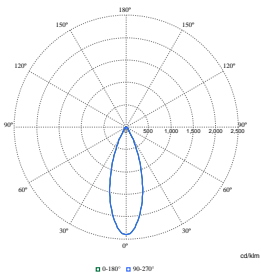


ST714T WH 12S TrueFashion2
compact-driver-in-track

Dimensional drawing



Polar Wide Diagrams



Polar Normal (separate) - ST715T1 -
910505102248

