



CoreLine wall-mounted – For every project, where light really matters. Suits your specific application.

CoreLine Wall-mounted

CoreLine wall-mounted solutions deliver on the CoreLine promise of innovative, easy-to-install and high-quality luminaires. These circular-shaped, surface-mounted luminaires are suitable for both ceiling and wall installations and are easy to apply in circulation areas such as corridors, hallways and staircases. The modern, unobtrusive design, combined with a homogeneous light distribution, ensures this luminaire will blend into the architecture of most buildings. All-in features provide up to three lumen packages and three color temperature options in one luminaire. Installers can easily fit the luminaire according to the application need on site. And thanks to the push-in connectors, installation of the CoreLine WL140V is fast and straightforward. This family includes Interact ready luminaires with integrated wireless communications, ready for use with Interact gateways, sensors and software.

CoreLine Wall-mounted

Benefits

- Delivers the right lighting settings for various applications
- Easy installation with push-in connectors and through wiring possibility
- Slim and unobtrusive design in black or grey, plus half-moon (eye-lid) accessories
- One product serves multi-functional purposes with dipswitch settings
- Direct replacement for traditional wall-mounted luminaires
- Water and vandal-proof as standard
- Emergency ready

Features

- High efficacy up to 140lm/W
- Three lumen packages and three-color temperatures to cater for diverse applications
- Choice of drivers: DALI with DC compatible, wireless with Interact ready
- Compatible emergency lighting kit (incl. self-test) available for self-installation
- IP65/IK10 as standard
- Optional motion detection, including daylight sensing, dimming and wireless grouping function with MDU

Application

- Offices
- Municipal Buildings
- Parking Garages
- Corridors
- Staircases
- Outdoor safety lighting

Warnings and Safety

- For outdoor operations; wall-mounted applications only and all cables should run indoors with a maximum distance of 10 meters

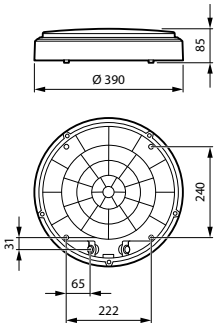
Versions



CoreLine Wall-mounted WL140V
Wall-mounted

CoreLine Wall-mounted

Dimensional drawing



Product details



CoreLine Wall-mounted WL140V
Rim Black



CoreLine Wall-mounted WL140V
Rim Grey



CoreLine Wall-mounted WL140V
Wall-mounted Black



CoreLine Wall-mounted WL140V
Wall-mounted PSU



CoreLine Wall-mounted WL140V
Ceiling-mounted Grey



CoreLine Wall-mounted WL140V
Ceiling-mounted Black

CoreLine Wall-mounted

Product details



CoreLine Wall-mounted WL140V
Wall-mounted White with Half-
moon Accessory



CoreLine Wall-mounted WL140V
Wall-mounted Grey with Half-
moon Accessory



Coreline Wall-mounted WL140V
Top View (with screw locations)



CoreLine Wall-mounted WL140V
Wall-mounted Switchable Lumen
& CCT



CoreLine Wall-mounted WL140V
Half-moon Accessory Black



CoreLine Wall-mounted WL140V
Half-moon Accessory Grey



CoreLine Wall-mounted WL140V
Ceiling-mounted



CoreLine Wall-mounted WL140V
Wall-mounted PSR MDU

CoreLine Wall-mounted

Product details



CoreLine Wall-mounted WL140V
Wall-mounted Grey

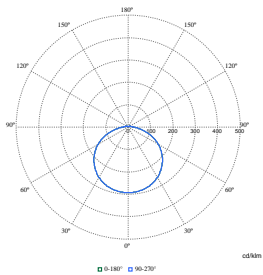


CoreLine Wall-mounted WL140V
Half-moon Accessory White



Coreline Wall-mounted WL140V
Top View

Polar Wide Diagrams



Polar Normal (separate) - null - 911401847882

