



# Philips GreenPerform Waterproof G3: A high-performance, energy-efficient waterproof batten

## GreenPerform Waterproof G3

GreenPerform Waterproof G3 is a superb choice for hard-working applications. Not only does it provide excellent optical performance, it also delivers substantial energy saving. And because it works seamlessly with IoT software like Interact, it also offers the option of customization, convenience, and data-driven insights.

### Benefits

- Suit your applications with choice of two superior optics
- Excellent energy savings
- Data-driven insights via
- Interact software and platforms

### Features

- Injection molding Polycarbonate Cover Opal (PCO) and Wide Beam (WB) optics
- Up to 140lm/W
- IP65/IK08
- 50,000 hours L70 B50 @ 35°C
- Works with Interact IoT software and platform

# GreenPerform Waterproof G3

## Application

- Parking Garages
- Manufacturing
- Warehouses

## Specifications

Mounting type	Surface
	Suspended
Operating Temperature range	-20 to +50°C
Light Source	LED
Mains Voltage	220-240V / 50-60Hz
Dimming	PSD: DALI
	WIA: Wireless control, compatible with Interact Pro
Control system input	DALI/Wireless Zigbee
Material	PC
Main color of the luminaire	RAL7035
Lumen maintenance at median useful life	L85
50.000h	
Flicker / Pst / SVM	<4% / 0.5 / 0.4
Luminous flux	Up to 8000lm
Power consumption	7.8W to 60W
Luminaire efficacy	Up to 140lm/W

Correlated color temperature - CCT	4000K
Color Rendering index - CRI	80
Optical cover/lens material	PC
Optical cover/lens finish	Opal
finish	Clear
Mechanical impact protection	IK08
Ingress protection	IP65
Driver replaceable	Yes
Overall height	76mm
Overall length	665mm
	1215mm
	1515mm
Overall width	80mm
Installation	Suspension
	Surface

## Versions



GreenPerform Waterproof EcoSet



WT198X L1200



L1500



CoreLine Waterproof WT120C G2 PCU -

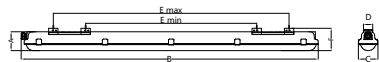
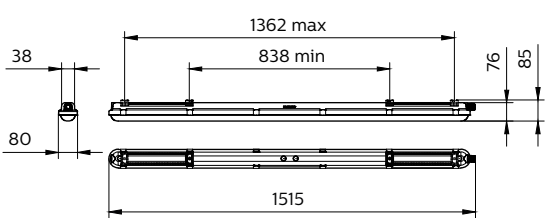
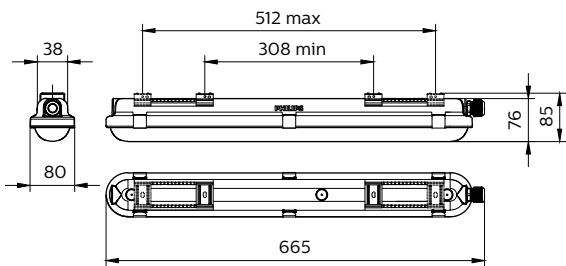
# GreenPerform Waterproof G3

## Versions

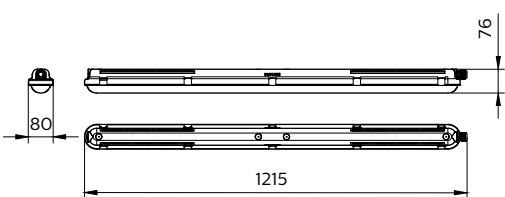
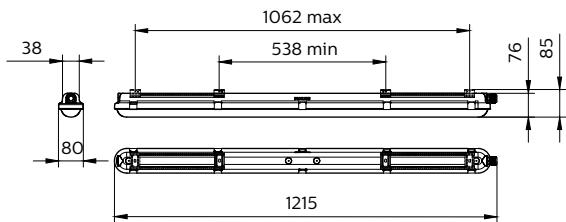
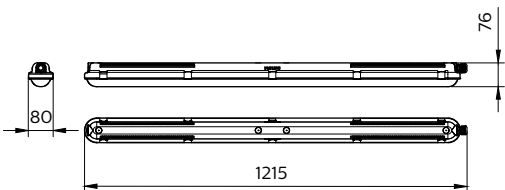


L1200

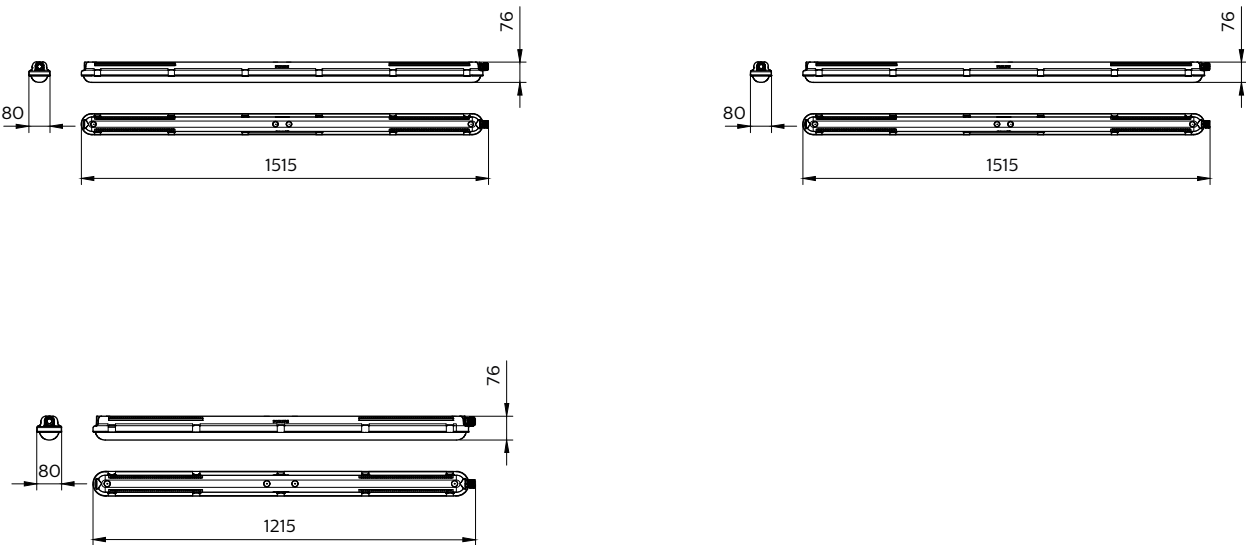
## Dimensional drawing



Type	A	B	C	D	E min	E max	F	Nr. Of Clips
L1200	76	665	80	38	538	1062	85	6
L1500		1515			1362			12



Dimensional drawing



General Information	
Service tag	Yes
Light Technical	
Optic type	-
Operating and Electrical	
Protection class IEC	Safety class I
Mechanical and Housing	
Housing Color	Gray
Mech. impact protection code	IK08
Ingress protection code	IP65
Approval and Application	
Ambient temperature range	-20 to +45 °C
CE mark	Yes
ENEC mark	-

General Information

Order Code	Full Product Name	Driver included	Light source		Number of gear units
			Gear	replaceable	
911401571391	WT198X LED60S/840 L1 S L1500	Yes	EB	-	1 unit
911401571291	WT198X LED40S/840 L1 S L1200	Yes	EB	-	1 unit
911401571691	WT198X LED27S/865 L1 S L1200	Yes	EB	-	1 unit
911401571791	WT198X LED40S/865 L1 S L1200	Yes	EB	-	1 unit
911401572191	WT198X LED26S/840 L1 S PCO L1200	Yes	EB	-	1 unit
911401572291	WT198X LED38S/840 L1 S PCO L1200	Yes	EB	-	1 unit
911401572691	WT198X LED26S/865 L1 S PCO L1200	Yes	EB	-	1 unit
911401572791	WT198X LED38S/865 L1 S PCO L1200	Yes	EB	-	1 unit
911401550281	WT198X LED60S/840 WIA L1500	-	-	-	-
911401552261	WT198C LED40S/840 PSU L1200 CL	Yes	-	No	1 unit
911401552361	WT198C LED60S/840 PSU L1500 CL	Yes	-	No	1 unit
911401552461	WT198C LED19S/840 PSU L600 CL	Yes	-	No	1 unit
911401562861	WT198C LED40S/840 PSD L1200	Yes	-	No	1 unit
911401562961	WT198C LED60S/840 PSD L1500	Yes	-	No	1 unit
911401563061	WT198C LED80S/840 PSD L1500	Yes	-	No	1 unit
911401825680	WT198C LED27S/840 PSU L1200	Yes	-	No	1 unit
911401825780	WT198C LED40S/840 PSU L1200	Yes	-	No	1 unit
911401825880	WT198C LED60S/840 PSU L1500	Yes	-	No	1 unit
911401825980	WT198C LED80S/840 PSU L1500	Yes	-	No	1 unit
911401550181	WT198X LED40S/840 WIA L1200	-	-	-	-

Light Technical (1/2)

Order Code	Full Product Name	Beam angle of light source	Correlated Color Temperature (Nom)	Color rendering index (CRI)	Luminous Efficacy (rated) (Nom)
911401571391	WT198X LED60S/840 L1 S L1500	-	4000 K	80	137.6 lm/W
911401571291	WT198X LED40S/840 L1 S L1200	-	4000 K	80	138.4 lm/W
911401571691	WT198X LED27S/865 L1 S L1200	-	6500 K	80	143.6 lm/W
911401571791	WT198X LED40S/865 L1 S L1200	-	6500 K	80	138.4 lm/W
911401572191	WT198X LED26S/840 L1 S PCO L1200	-	4000 K	80	138.3 lm/W
911401572291	WT198X LED38S/840 L1 S PCO L1200	-	4000 K	80	131.5 lm/W
911401572691	WT198X LED26S/865 L1 S PCO L1200	-	6500 K	80	138.3 lm/W
911401572791	WT198X LED38S/865 L1 S PCO L1200	-	6500 K	80	131.5 lm/W
911401550281	WT198X LED60S/840 WIA L1500	-	4000 K	>80	133 lm/W
911401552261	WT198C LED40S/840 PSU L1200 CL	120 degree(s)	4000 K	>80	140 lm/W

Order Code	Full Product Name	Beam angle of light source	Correlated Color Temperature (Nom)	Color rendering index (CRI)	Luminous Efficacy (rated) (Nom)
911401552361	WT198C LED60S/840 PSU L1500 CL	120 degree(s)	4000 K	>80	140 lm/W
911401552461	WT198C LED19S/840 PSU L600 CL	120 degree(s)	4000 K	>80	127 lm/W
911401562861	WT198C LED40S/840 PSD L1200	120 degree(s)	4000 K	>80	140 lm/W
911401562961	WT198C LED60S/840 PSD L1500	120 degree(s)	4000 K	>80	140 lm/W
911401563061	WT198C LED80S/840 PSD L1500	120 degree(s)	4000 K	>80	140 lm/W
911401825680	WT198C LED27S/840 PSU L1200	120 degree(s)	4000 K	>80	132 lm/W
911401825780	WT198C LED40S/840 PSU L1200	120 degree(s)	4000 K	>80	140 lm/W
911401825880	WT198C LED60S/840 PSU L1500	120 degree(s)	4000 K	>80	140 lm/W
911401825980	WT198C LED80S/840 PSU L1500	120 degree(s)	4000 K	>80	140 lm/W
911401550181	WT198X LED40S/840 WIA L1200	-	4000 K	>80	133 lm/W

Light Technical (2/2)

Order Code	Full Product Name	Luminous Flux	Number of light sources
911401571391	WT198X LED60S/840 L1 S L1500	6,000 lm	1
911401571291	WT198X LED40S/840 L1 S L1200	4,000 lm	1
911401571691	WT198X LED27S/865 L1 S L1200	2,700 lm	1
911401571791	WT198X LED40S/865 L1 S L1200	4,000 lm	1
911401572191	WT198X LED26S/840 L1 S PCO L1200	2,600 lm	1
911401572291	WT198X LED38S/840 L1 S PCO L1200	3,800 lm	1
911401572691	WT198X LED26S/865 L1 S PCO L1200	2,600 lm	1
911401572791	WT198X LED38S/865 L1 S PCO L1200	3,800 lm	1
911401550281	WT198X LED60S/840 WIA L1500	6,000 lm	-
911401552261	WT198C LED40S/840 PSU L1200 CL	4,000 lm	-

Order Code	Full Product Name	Luminous Flux	Number of light sources
911401552361	WT198C LED60S/840 PSU L1500 CL	6,000 lm	-
911401552461	WT198C LED19S/840 PSU L600 CL	1,900 lm	-
911401562861	WT198C LED40S/840 PSD L1200	4,000 lm	-
911401562961	WT198C LED60S/840 PSD L1500	6,000 lm	-
911401563061	WT198C LED80S/840 PSD L1500	8,000 lm	-
911401825680	WT198C LED27S/840 PSU L1200	2,700 lm	-
911401825780	WT198C LED40S/840 PSU L1200	4,000 lm	-
911401825880	WT198C LED60S/840 PSU L1500	6,000 lm	-
911401825980	WT198C LED80S/840 PSU L1500	8,000 lm	-
911401550181	WT198X LED40S/840 WIA L1200	4,000 lm	-

Operating and Electrical

GreenPerform Waterproof G3

Order Code	Full Product Name	Input Voltage	Line Frequency	Power Consumption	Suitable for random switching
911401571391	WT198X LED60S/840 L1 S L1500	220 to 240 V	50 to 60 Hz	43.6 W	Yes
911401571291	WT198X LED40S/840 L1 S L1200	220 to 240 V	50 to 60 Hz	28.9 W	Yes
911401571691	WT198X LED27S/865 L1 S L1200	220 to 240 V	50 to 60 Hz	18.8 W	Yes
911401571791	WT198X LED40S/865 L1 S L1200	220 to 240 V	50 to 60 Hz	28.9 W	Yes
911401572191	WT198X LED26S/840 L1 S PCO L1200	220 to 240 V	50 to 60 Hz	18.8 W	Yes
911401572291	WT198X LED38S/840 L1 S PCO L1200	220 to 240 V	50 to 60 Hz	28.9 W	Yes
911401572691	WT198X LED26S/865 L1 S PCO L1200	220 to 240 V	50 to 60 Hz	18.8 W	Yes
911401572791	WT198X LED38S/865 L1 S PCO L1200	220 to 240 V	50 to 60 Hz	28.9 W	Yes
911401550281	WT198X LED60S/840 WIA L1500	220-240 V	50 or 60 Hz	45 W	-
911401552261	WT198C LED40S/840 PSU L1200 CL	220 to 240 V	50 or 60 Hz	28.6 W	-

Order Code	Full Product Name	Input Voltage	Line Frequency	Power Consumption	Suitable for random switching
911401552361	WT198C LED60S/840 PSU L1500 CL	220 to 240 V	50 or 60 Hz	42.7 W	-
911401552461	WT198C LED19S/840 PSU L600 CL	220 to 240 V	50 or 60 Hz	15 W	-
911401562861	WT198C LED40S/840 PSD L1200	220 to 240 V	50 or 60 Hz	28.6 W	Not applicable
911401562961	WT198C LED60S/840 PSD L1500	220 to 240 V	50 or 60 Hz	42.7 W	Not applicable
911401563061	WT198C LED80S/840 PSD L1500	220 to 240 V	50 or 60 Hz	57.1 W	Not applicable
911401825680	WT198C LED27S/840 PSU L1200	220 to 240 V	50 or 60 Hz	20.5 W	-
911401825780	WT198C LED40S/840 PSU L1200	220 to 240 V	50 or 60 Hz	28.6 W	-
911401825880	WT198C LED60S/840 PSU L1500	220 to 240 V	50 or 60 Hz	42.7 W	-
911401825980	WT198C LED80S/840 PSU L1500	220 to 240 V	50 or 60 Hz	57 W	-
911401550181	WT198X LED40S/840 WIA L1200	220-240 V	50 or 60 Hz	30 W	-

Controls and Dimming

Order Code	Full Product Name	Dimmable	Maximum dim level
911401571391	WT198X LED60S/840 L1 S L1500	Step Dim	20%
911401571291	WT198X LED40S/840 L1 S L1200	Wireless Dim	20%
911401571691	WT198X LED27S/865 L1 S L1200	Wireless Dim	20%
911401571791	WT198X LED40S/865 L1 S L1200	Step Dim	20%
911401572191	WT198X LED26S/840 L1 S PCO L1200	Step Dim	20%
911401572291	WT198X LED38S/840 L1 S PCO L1200	Wireless Dim	20%
911401572691	WT198X LED26S/865 L1 S PCO L1200	Step Dim	20%
911401572791	WT198X LED38S/865 L1 S PCO L1200	Wireless Dim	20%
911401550281	WT198X LED60S/840 WIA L1500	Yes	-
911401552261	WT198C LED40S/840 PSU L1200 CL	No	Not applicable

Order Code	Full Product Name	Dimmable	Maximum dim level
911401552361	WT198C LED60S/840 PSU L1500 CL	No	Not applicable
911401552461	WT198C LED19S/840 PSU L600 CL	No	Not applicable
911401562861	WT198C LED40S/840 PSD L1200	Yes	Not applicable
911401562961	WT198C LED60S/840 PSD L1500	Yes	Not applicable
911401563061	WT198C LED80S/840 PSD L1500	Yes	Not applicable
911401825680	WT198C LED27S/840 PSU L1200	No	Not applicable
911401825780	WT198C LED40S/840 PSU L1200	No	Not applicable
911401825880	WT198C LED60S/840 PSU L1500	No	Not applicable
911401825980	WT198C LED80S/840 PSU L1500	No	Not applicable
911401550181	WT198X LED40S/840 WIA L1200	Yes	-

Mechanical and Housing

Order Code	Full Product Name	Optical cover type
911401571391	WT198X LED60S/840 L1 S L1500	Polycarbonate bowl/cover
911401571291	WT198X LED40S/840 L1 S L1200	Polycarbonate bowl/cover
911401571691	WT198X LED27S/865 L1 S L1200	Polycarbonate bowl/cover
911401571791	WT198X LED40S/865 L1 S L1200	Polycarbonate bowl/cover
911401572191	WT198X LED26S/840 L1 S PCO L1200	Polycarbonate bowl/cover
911401572291	WT198X LED38S/840 L1 S PCO L1200	Polycarbonate bowl/cover
911401572691	WT198X LED26S/865 L1 S PCO L1200	Polycarbonate bowl/cover
911401572791	WT198X LED38S/865 L1 S PCO L1200	Polycarbonate bowl/cover
911401550281	WT198X LED60S/840 WIA L1500	Acrylic bowl/cover frosted
911401552261	WT198C LED40S/840 PSU L1200 CL	-

Order Code	Full Product Name	Optical cover type
911401552361	WT198C LED60S/840 PSU L1500 CL	-
911401552461	WT198C LED19S/840 PSU L600 CL	-
911401562861	WT198C LED40S/840 PSD L1200	-
911401562961	WT198C LED60S/840 PSD L1500	-
911401563061	WT198C LED80S/840 PSD L1500	-
911401825680	WT198C LED27S/840 PSU L1200	-
911401825780	WT198C LED40S/840 PSU L1200	-
911401825880	WT198C LED60S/840 PSU L1500	-
911401825980	WT198C LED80S/840 PSU L1500	-
911401550181	WT198X LED40S/840 WIA L1200	Acrylic bowl/cover frosted

Approval and Application

Order Code	Full Product Name	Flammability	
		mark	Glow-wire test
911401571391	WT198X LED60S/840 L1 S L1500	-	Temperature 650 °C, duration 30 s
911401571291	WT198X LED40S/840 L1 S L1200	-	Temperature 650 °C, duration 30 s
911401571691	WT198X LED27S/865 L1 S L1200	-	Temperature 650 °C, duration 30 s
911401571791	WT198X LED40S/865 L1 S L1200	-	Temperature 650 °C, duration 30 s
911401572191	WT198X LED26S/840 L1 S PCO L1200	-	Temperature 650 °C, duration 30 s
911401572291	WT198X LED38S/840 L1 S PCO L1200	-	Temperature 650 °C, duration 30 s
911401572691	WT198X LED26S/865 L1 S PCO L1200	-	Temperature 650 °C, duration 30 s
911401572791	WT198X LED38S/865 L1 S PCO L1200	-	Temperature 650 °C, duration 30 s
911401550281	WT198X LED60S/840 WIA L1500	For mounting on normally flammable surfaces	-
911401552261	WT198C LED40S/840 PSU L1200 CL	-	Temperature 850 °C, duration 30 s

Order Code	Full Product Name	Flammability	
		mark	Glow-wire test
911401552361	WT198C LED60S/840 PSU L1500 CL	-	Temperature 850 °C, duration 30 s
911401552461	WT198C LED19S/840 PSU L600 CL	-	Temperature 850 °C, duration 30 s
911401562861	WT198C LED40S/840 PSD L1200	-	Temperature 850 °C, duration 30 s
911401562961	WT198C LED60S/840 PSD L1500	-	Temperature 850 °C, duration 30 s
911401563061	WT198C LED80S/840 PSD L1500	-	Temperature 850 °C, duration 30 s
911401825680	WT198C LED27S/840 PSU L1200	-	Temperature 850 °C, duration 30 s
911401825780	WT198C LED40S/840 PSU L1200	-	Temperature 850 °C, duration 30 s
911401825880	WT198C LED60S/840 PSU L1500	-	Temperature 850 °C, duration 30 s
911401825980	WT198C LED80S/840 PSU L1500	-	Temperature 850 °C, duration 30 s
911401550181	WT198X LED40S/840 WIA L1200	For mounting on normally flammable surfaces	-

Initial Performance (IEC Compliant)

Order Code	Full Product Name	Initial chromaticity	Luminous flux
			tolerance
911401571391	WT198X LED60S/840 L1 S L1500	(0.38, 0.38) SDCM≤3	-10% / +10%
911401571291	WT198X LED40S/840 L1 S L1200	(0.38, 0.38) SDCM≤3	-10% / +10%
911401571691	WT198X LED27S/865 L1 S L1200	(0.32, 0.33) SDCM≤3	-10% / +10%
911401571791	WT198X LED40S/865 L1 S L1200	(0.32, 0.33) SDCM≤3	-10% / +10%

Order Code	Full Product Name	Initial chromaticity	Luminous flux
			tolerance
911401572191	WT198X LED26S/840 L1 S PCO L1200	(0.38, 0.38) SDCM≤3	-10% / +10%
911401572291	WT198X LED38S/840 L1 S PCO L1200	(0.38, 0.38) SDCM≤3	-10% / +10%
911401572691	WT198X LED26S/865 L1 S PCO L1200	(0.32, 0.33) SDCM≤3	-10% / +10%
911401572791	WT198X LED38S/865 L1 S PCO L1200	(0.32, 0.33) SDCM≤3	-10% / +10%

GreenPerform Waterproof G3

Order Code	Full Product Name	Initial chromaticity	Luminous flux tolerance
911401550281	WT198X LED60S/840 WIA L1500	(0.3742,0.3698) SDCM<3	+/-10%
911401552261	WT198C LED40S/840 PSU L1200 CL	(0.38,0.38)	+/-10%
911401552361	WT198C LED60S/840 PSU L1500 CL	(0.38,0.38)	+/-10%
911401552461	WT198C LED19S/840 PSU L600 CL	(0.38,0.38)	+/-10%
911401562861	WT198C LED40S/840 PSD L1200	(0.38,0.38)	+/-10%
911401562961	WT198C LED60S/840 PSD L1500	(0.38,0.38)	+/-10%

Order Code	Full Product Name	Initial chromaticity	Luminous flux tolerance
911401563061	WT198C LED80S/840 PSD L1500	(0.38,0.38)	+/-10%
911401825680	WT198C LED27S/840 PSU L1200	(0.38,0.38)	+/-10%
911401825780	WT198C LED40S/840 PSU L1200	(0.38,0.38)	+/-10%
911401825880	WT198C LED60S/840 PSU L1500	(0.38,0.38)	+/-10%
911401825980	WT198C LED80S/840 PSU L1500	(0.38,0.38)	+/-10%
911401550181	WT198X LED40S/840 WIA L1200	(0.3742,0.3698) SDCM<3	+/-10%

Over Time Performance (IEC Compliant)

Order Code	Full Product Name	Driver failure rate at 5000 h	Median useful life L80B50	Median useful life L90B50
911401571391	WT198X LED60S/840 L1 S L1500	-	-	-
911401571291	WT198X LED40S/840 L1 S L1200	-	-	-
911401571691	WT198X LED27S/865 L1 S L1200	-	-	-
911401571791	WT198X LED40S/865 L1 S L1200	-	-	-
911401572191	WT198X LED26S/840 L1 S PCO L1200	-	-	-
911401572291	WT198X LED38S/840 L1 S PCO L1200	-	-	-
911401572691	WT198X LED26S/865 L1 S PCO L1200	-	-	-
911401572791	WT198X LED38S/865 L1 S PCO L1200	-	-	-
911401550281	WT198X LED60S/840 WIA L1500	-	-	-
911401552261	WT198C LED40S/840 PSU L1200 CL	0.01 %	42,000 h	20,000 h

Order Code	Full Product Name	Driver failure rate at 5000 h	Median useful life L80B50	Median useful life L90B50
911401552361	WT198C LED60S/840 PSU L1500 CL	0.01 %	42,000 h	20,000 h
911401552461	WT198C LED19S/840 PSU L600 CL	0.01 %	42,000 h	20,000 h
911401562861	WT198C LED40S/840 PSD L1200	0.01 %	42,000 h	20,000 h
911401562961	WT198C LED60S/840 PSD L1500	0.01 %	42,000 h	20,000 h
911401563061	WT198C LED80S/840 PSD L1500	0.01 %	42,000 h	20,000 h
911401825680	WT198C LED27S/840 PSU L1200	1 %	42,000 h	20,000 h
911401825780	WT198C LED40S/840 PSU L1200	1 %	42,000 h	20,000 h
911401825880	WT198C LED60S/840 PSU L1500	1 %	42,000 h	20,000 h
911401825980	WT198C LED80S/840 PSU L1500	1 %	42,000 h	20,000 h
911401550181	WT198X LED40S/840 WIA L1200	-	-	-

