



Product Description

TUV Amalgam XPT systems

TUV Amalgam XPT lamps are long-arc UVC (germicidal) lamps used in professional water disinfection equipment. They combine high efficiency with relatively high power density. Thanks to their constant UVC output over the complete lifetime, these lamps can be dimmed to reach the same UVC output compared with similar lamps on the market, allowing for approximately 10% energy savings. The special amalgam used allows for flexibility in system design and application temperature.

Benefits

- Security of effective disinfection over the complete lifetime of the lamp
- Approximately 10% energy savings, because lamps can be dimmed to reach the same UV output compared to similar lamps on the market
- High system efficacy because it is not required to over-design the purification system to maintain effectiveness of disinfection

Features

- Short-wave UV radiation with a peak at 253.7 nm (UVC) for disinfection
- Special amalgam used for highest efficiency over wide temperature range
- Protective inside coating ensures constant UV output over the complete lifetime of the lamp
- Philips electronic driver available for a perfect interface
- Minimized amount of mercury
- Universal burning position possible, depending on lamp type
- Tailor-made solutions possible

Application

- Deactivation of bacteria, viruses and other micro-organisms
- Municipal drinking water treatment equipment
- Waste water treatment equipment
- Process water treatment equipment
- Swimming pool units
- Equipment for the production of ultra-pure water, for example for the semiconductor, pharmaceuticals and cosmetics industries

TUV Amalgam XPT systems

Warnings and Safety

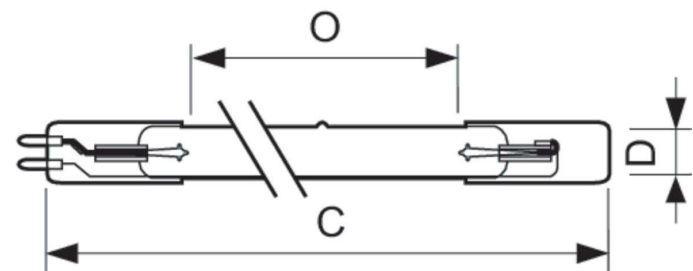
- A lamp breaking is extremely unlikely to have any impact on your health. If a lamp breaks, ventilate the room for 30 minutes and remove the parts, preferably with gloves. Put them in a sealed plastic bag and take it to your local waste facilities for recycling. Do not use a vacuum cleaner.
- DANGER: Risk Group 3 Ultra Violet product. These lamps emit high-power UV radiation that can cause severe injury to skin and eyes. Avoid eye and skin exposure to unshielded product. Use only in an enclosed environment which shields users from the radiation.

Versions

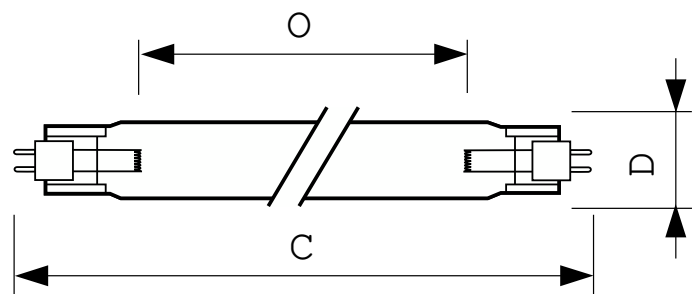


XPPR_XDTUVXPT_0004-Product photo

Dimensional drawing



| Product | D | O | C (max) |
|---------------------------|-------|----------|----------|
| TUV 130W XPT SE UNP/20 | 19 mm | 740 mm | 842 mm |
| TUV 200W XPT SE UNP/20 | 19 mm | 1,040 mm | 1,147 mm |
| TUV 240W XPT SE P UNP/20 | 19 mm | 1,450 mm | 1,559 mm |
| TUV 325W XPT HO SE UNP/20 | 19 mm | 1,480 mm | 1,582 mm |



| Product | D | O | C (max) |
|---------------------|-------|----------|----------|
| TUV 330W XPT DE UNP | 32 mm | 1,440 mm | 1,554 mm |

Controls and Dimming

Dimmable Yes

General Information

TUV Amalgam XPT systems

| Order Code | Full Product Name | Cap-Base | Operating Position |
|--------------|--------------------------|----------|---|
| 928107205112 | TUV 330W XPT DE UNP | - | P10 |
| 928101805112 | TUV 130W XPT SE UNP/20 | G10.2q | P10 |
| 928103005112 | TUV 240W XPT SE P UNP/20 | G10.2q | Horizontal – Vertical (in vertical position, temperature of |

| Order Code | Full Product Name | Cap-Base | Operating Position |
|--------------|---------------------------|----------|--|
| | | | amalgam should be kept below 140 °C) |
| 928106905112 | TUV 200W XPT SE UNP/20 | G10.2q | UNIVERSAL |
| 928107005112 | TUV 325W XPT HO SE UNP/20 | G10.2q | Horizontal – Vertical (in vertical position, temperature of amalgam should be kept below 140 °C) |

Operating and Electrical

| Order Code | Full Product Name | Lamp Current (Nom) | Power Consumption |
|--------------|--------------------------|--------------------|-------------------|
| 928107205112 | TUV 330W XPT DE UNP | - | 330 W |
| 928101805112 | TUV 130W XPT SE UNP/20 | 2.1 A | 130 W |
| 928103005112 | TUV 240W XPT SE P UNP/20 | 2.1 A | 240 W |

| Order Code | Full Product Name | Lamp Current (Nom) | Power Consumption |
|--------------|---------------------------|--------------------|-------------------|
| 928106905112 | TUV 200W XPT SE UNP/20 | 2.1 A | 200 W |
| 928107005112 | TUV 325W XPT HO SE UNP/20 | 2.1 A | 325 W |

