



Architectural Lighting DMX Controls and Wiring Accessories

Uni DMX controls and accessories

The ZXP399 DMX Controls and Wiring Accessories are to be used with our architectural and facade lighting luminaires (UniFlood C, M and G, UniStrip G4, UniEdge, UniDot G2, UniString and UniBar). DMX Controls include main controller, stand-alone controller, sub-controllers, DMX amplifier and DMX addressing device.

Main Controller: Industrial computer that can control up to 6000 DMX universes.

Stand-alone Controller: Fits for medium applications with up to 700 DMX universes.

Wiring accessories include leader and jumper cables with male and female IP67

connectors and end-caps. Addressing Device: Hand-held device that can write DMX addresses to a whole run on-site within minutes. DMX Amplifier: Compact, IP65 and low power repeater that can amplify the DMX signal for up 100 meters.

Application

- Bridges, Monuments, Facades
- Landscape
- Parks and Plazas

Uni DMX controls and accessories

Versions



ZXP399 Endcap F

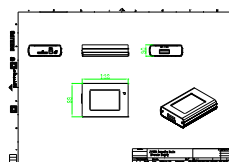
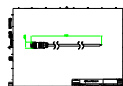
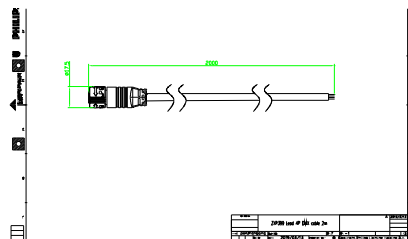
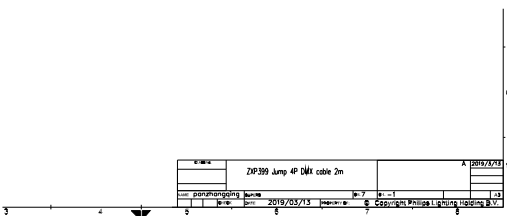
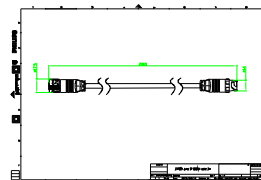
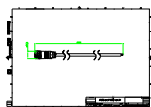


ZXP399 Endcap M



Addressing Kit

Dimensional drawing



Uni DMX controls and accessories

Product details

	DMX addressing kit		DMX addressing kit
	DMX addressing kit		

